

**1**
**Era | CSE**

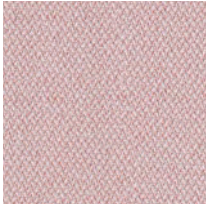
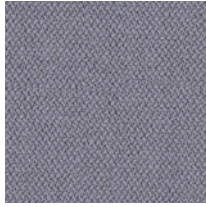
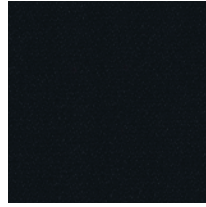
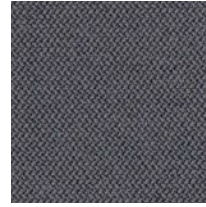
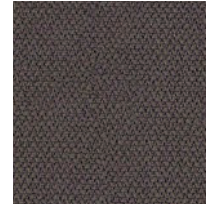
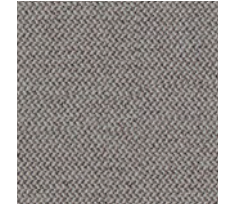

Cigarette &amp; Match



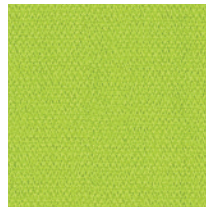
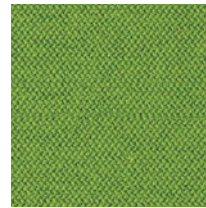
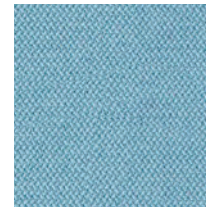
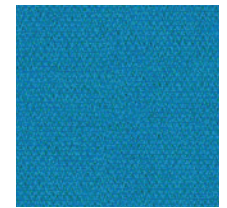
High abrasion resistance



Confirmed safety


**CSE19**

**CSE11**

**CSE14**

**CSE13**

**CSE21**

**CSE02**

**CSE01**

**CSE03**

**CSE07**

**CSE16**

**CSE20**

**CSE10**

 Price group:  
 Grupa cenowa:  
 Preisgruppe:  
 Groupe de prix :

**1**

 Composition:  
 Skład:  
 Material:  
 Composition :

100%

 polyester, non metallic dyestuffs  
 poliester, nie zawiera pigmentów metalicznych  
 Polyester, nicht schwermetallhaltige Farbstoffe  
 polyester, teintures non métalliques

 Weight:  
 Gramatura:  
 Gewicht:  
 Poids :

 320 g/m<sup>2</sup>

 Abrasion resistance:  
 Odporność na ścieranie:  
 Scheuerfestigkeit:  
 Résistance à l'abrasion :

≥100 000

 Martindale cycles  
 cykli Martindale  
 Touren Martindale  
 cycles Martindales

 Colour fastness to light:  
 Odporność barwy na światło:  
 Lichtechtheit:  
 Résistance de la couleur à la lumière :

 EN ISO 105-B02  
 (min. 5)

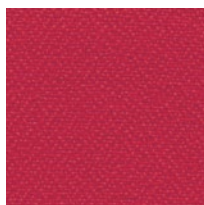
 Flammability:  
 Trudnozapałność:  
 Brandschutznormen:  
 Résistance au feu :

 EN 1021-1,  
 EN 1021-2  
 BS 7176 low hazard

 Other:  
 Inne:  
 Sonstiges:  
 Autres :

 Oeko-Tex Standard 100  
 certificate

# 1 YB | Lucia

Cigarette  
& MatchRecycled  
originEnvironmentally  
friendlyConfirmed  
safety

YB105



YB130



YB093



YB156



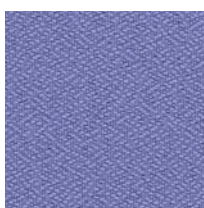
YB200



YB086



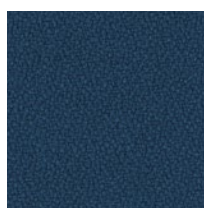
YB097



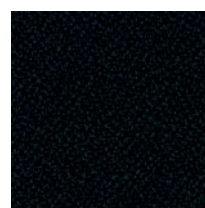
YB069



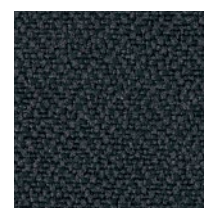
YB021



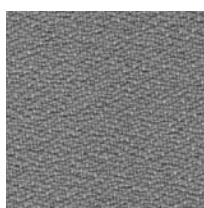
YB026



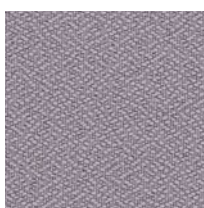
YB009



YB046



YB094



YB038



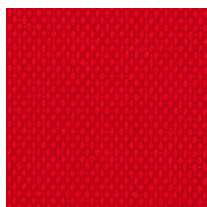
YB090

Price group: Grupa cenowa: Preisgruppe: Groupe de prix :	<b>1</b>	Weight: Gramatura: Gewicht: Poids :	260 g/m <sup>2</sup>
Composition: Skład: Material: Composition :	100%	recycled polyester, non metallic dyestuffs poliester pochodzący z recyklingu, nie zawiera pigmentów metalicznych recycltes Polyester, nicht schwermetallhaltige Farbstoffe polyester recyclé, teintures non métalliques	
Abrasion resistance: Odporność na ścieranie: Scheuerfestigkeit: Résistance à l'abrasion :	50 000	Martindale cycles cykli Martindale Touren Martindale cycles Martindales	
Colour fastness to light: Odporność barwy na światło: Lichtechtheit: Résistance de la couleur à la lumière :	EN ISO 105-B02 (6)	Flammability: Trudnozapałność: Brandschutznormen: Résistance au feu :	EN 1021-1, EN 1021-2 BS 7176 low hazard BS 476 Class 1
Other: Inne: Sonstiges: Autres :	EU Ecolabel certificate Oeko-Tex Standard 100 certificate		

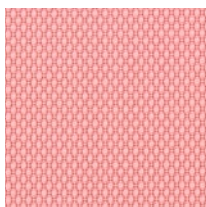
Note! Colour patterns illustrated here may differ from the originals. Nowy Styl Group reserves the right to change the constructional features and finishes of products. Information about finishes applicable to each product can be found in Nowy Styl Group's pricelists. | Die tatsächlichen Farben können von den, im Katalog abgebildeten Farben abweichen. Weitere Informationen zu den Oberflächen / Stoffen finden Sie in den Preislisten. Nowy Styl Group behält sich das Recht vor, Designänderungen und Änderungen in den Stoffen und Oberflächen vorzunehmen. | Les coloris réels peuvent légèrement différer des coloris présentés dans ce nuancier. Pour plus d'informations sur les finitions disponibles pour chaque produit, se reporter aux Tarifs Publics. Nowy Styl Group se réserve le droit de modifier les finitions de ses produits.

2

## FLG | Felicity

Cigarette  
& MatchRecycled  
originEnvironmentally  
friendlyConfirmed  
safety

FLG64190



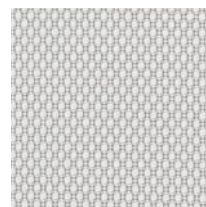
FLG64189



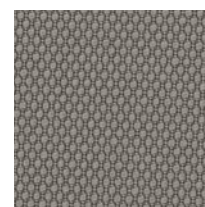
FLG61163



FLG62080



FLG60105



FLG60106



FLG64191



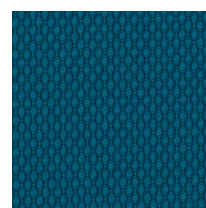
FLG61165



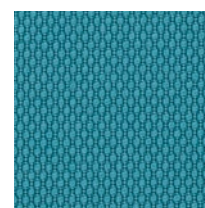
FLG61164



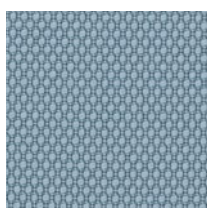
FLG68179



FLG67083



FLG67079



FLG66161



FLG60107



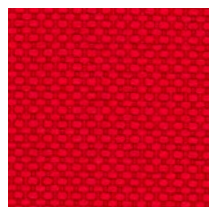
FLG60999

Price group: Grupa cenowa: Preisgruppe: Groupe de prix :	<b>2</b>	Weight: Gramatura: Gewicht: Poids :	307 g/m <sup>2</sup>
Composition: Skład: Material: Composition :	100%	post-consumer recycled polyester poliester pochodzący z recyklingu recycltes Post-Consumer-Polyester polyester recyclé de récupération	
Abrasion resistance: Odporność na ścieranie: Scheuerfestigkeit: Résistance à l'abrasion :	90 000	Martindale cycles cykli Martindale Touren Martindale cycles Martindales	
Colour fastness to light: Odporność barwy na światło: Lichtechtheit: Résistance de la couleur à la lumière :	EN ISO 105-B02 (min. 5-7)		
Colour fastness to rubbing: Odporność barwy na tarcie: Reibechtheit: Résistance de la couleur au frottement :	EN ISO 105-X12 (wet: 4-5 / dry: 4-5)	Pilling: Odporność na pilling: Pilling: Résistance au boulochage :	EN ISO 12945-2 (5)
Flammability: Trudnozapalność: Brandschutznormen: Résistance au feu :	EN 1021-1, EN 1021-2 Calif. Bull. 117E	Other: Inne: Sonstiges: Autres :	EU Ecolabel certificate Cradle to Cradle certificate Oeko-Tex Standard 100 certificate

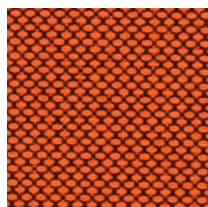
Note! Colour patterns illustrated here may differ from the originals. Nowy Styl Group reserves the right to change the constructional features and finishes of products. Information about finishes applicable to each product can be found in Nowy Styl Group's pricelists. | Die tatsächlichen Farben können von den, im Katalog abgebildeten Farben abweichen. Weitere Informationen zu den Oberflächen / Stoffen finden Sie in den Preislisten. Nowy Styl Group behält sich das Recht vor, Designänderungen und Änderungen in den Stoffen und Oberflächen vorzunehmen. | Les coloris réels peuvent légèrement différer des coloris présentés dans ce nuancier. Pour plus d'informations sur les finitions disponibles pour chaque produit, se reporter aux Tarifs Publics. Nowy Styl Group se réserve le droit de modifier les finitions de ses produits.

2

## RD(X)F | Radio

Cigarette  
& MatchHigh flame  
resistanceConfirmed  
safety

RDF4028



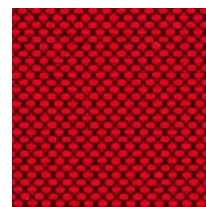
RDXF3594



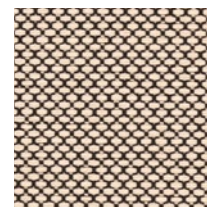
RDF3094



RDF3082



RDXF4528



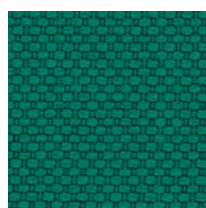
RDXF1510



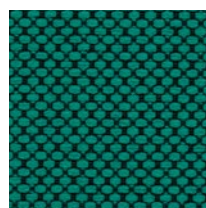
RDF1008



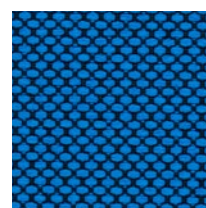
RDXF7025



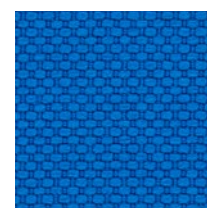
RDF7008



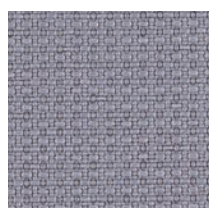
RDXF7508



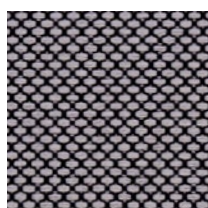
RDXF6575



RDF6075



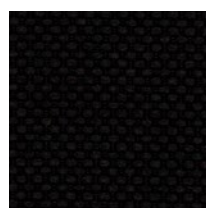
RDF8032



RDXF8532



RDXF8517



RDF8033

Price group: Grupa cenowa: Preisgruppe: Groupe de prix :	<b>2</b>	Weight: Gramatura: Gewicht: Poids :	400 g/m <sup>2</sup>
Composition: Skład: Material: Composition :	100%	polyester FR poliester FR Polyester FR polyester FR	
Abrasion resistance: Odporność na ścieranie: Scheuerfestigkeit: Résistance à l'abrasion :	80 000	Martindale cycles cykli Martindale Touren Martindale cycles Martindales	
Colour fastness to light: Odporność barwy na światło: Lichtechtheit: Résistance de la couleur à la lumière :	EN ISO 105-B02 (6)	Colour fastness to rubbing: Odporność barwy na tarcie: Reibechtheit: Résistance de la couleur au frottement :	EN ISO 105-X12 (wet: 4-5 / dry: 4-5)
Flammability: Trudnozupalność: Brandschutznormen: Résistance au feu :	EN 1021-1, EN 1021-2, BS 5852 Crib 5 BS 7176 medium hazard DIN 4102 B1, NF D 60-013 AM 18, NF P 92-501-7 M1 Önorm A 3800-1 Class B1-Q1-TR1 Önorm B 3825, Calif. Bull. 117E		
Other: Inne: Sonstiges: Autres :	Oeko-Tex Standard 100 certificate		

Note! Colour patterns illustrated here may differ from the originals. Nowy Styl Group reserves the right to change the constructional features and finishes of products. Information about finishes applicable to each product can be found in Nowy Styl Group's pricelists. | Die tatsächlichen Farben können von den, im Katalog abgebildeten Farben abweichen. Weitere Informationen zu den Oberflächen / Stoffen finden Sie in den Preislisten. Nowy Styl Group behält sich das Recht vor, Designänderungen und Änderungen in den Stoffen und Oberflächen vorzunehmen. | Les coloris réels peuvent légèrement différer des coloris présentés dans ce nuancier. Pour plus d'informations sur les finitions disponibles pour chaque produit, se reporter aux Tarifs Publics. Nowy Styl Group se réserve le droit de modifier les finitions de ses produits.

2 **XR | Xtreme**



Cigarette & Match



High flame resistance



Environmentally friendly



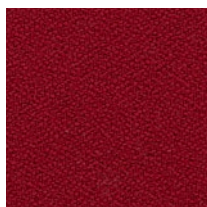
Recycled origin



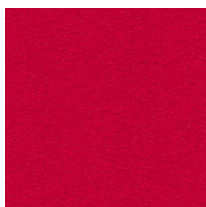
High abrasion resistance



Confirmed safety



XR136



XR079



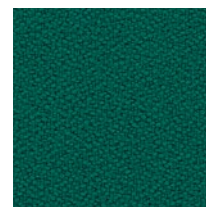
XR076



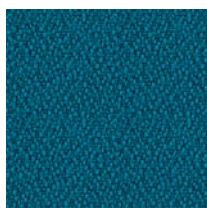
XR072



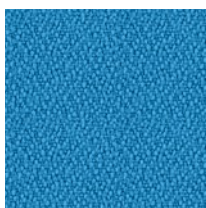
XR108



XR161



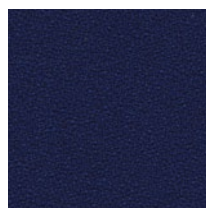
XR160



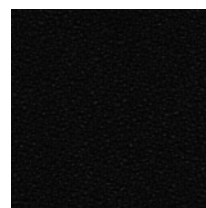
XR073



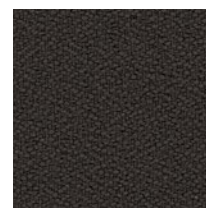
XR005



XR026



XR009



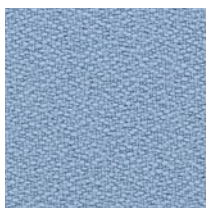
XR046



XR081



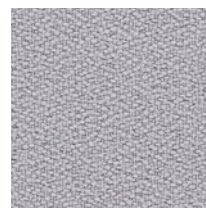
XR171



XR095



XR102



XR094

Price group: Grupa cenowa: Preisgruppe: Groupe de prix :	<b>2</b>	Weight: Gramatura: Gewicht: Poids :	310 g/m <sup>2</sup>
Composition: Skład: Material: Composition :	100%	recycled flame retardant polyester, non metallic dyestuffs poliester ognioodporny pochodzący z recyklingu, nie zawiera pigmentów metalicznych recycltes, schwerentflammbares Polyester, nicht schwermetallhaltige Farbstoffe polyester recyclé ignifuge, teintures non métalliques	
Abrasion resistance: Odporność na ścieranie: Scheuerfestigkeit: Résistance à l'abrasion :	≥100 000	Martindale cycles cykli Martindale Touren Martindale cycles Martindales	Colour fastness to light: Odporność barwy na światło: Lichtechtheit: Résistance de la couleur à la lumière :
Colour fastness to rubbing: Odporność barwy na tarcie: Reibechtheit: Résistance de la couleur au frottement :	EN ISO 105-X12 (wet: 4 / dry: 4)		Pilling: Odporność na pilling: Pilling: Résistance au boulochage :
Flammability: Trudnozapalność: Brandschutznormen: Résistance au feu :	EN 1021-1, EN 1021-2 BS 5852 Crib 5 BS 7176 medium hazard BS 476 Class 1 DIN 4102 B1		Other: Inne: Sonstiges: Autres :
			EU Ecolabel certificate Oeko-Tex Standard 100 certificate

Note! Colour patterns illustrated here may differ from the originals. Nowy Styl Group reserves the right to change the constructional features and finishes of products. Information about finishes applicable to each product can be found in Nowy Styl Group's pricelists. | Die tatsächlichen Farben können von den, im Katalog abgebildeten Farben abweichen. Weitere Informationen zu den Oberflächen / Stoffen finden Sie in den Preislisten. Nowy Styl Group behält sich das Recht vor, Designänderungen und Änderungen in den Stoffen und Oberflächen vorzunehmen. | Les coloris réels peuvent légèrement différer des coloris présentés dans ce nuancier. Pour plus d'informations sur les finitions disponibles pour chaque produit, se reporter aux Tarifs Publics. Nowy Styl Group se réserve le droit de modifier les finitions de ses produits.

3

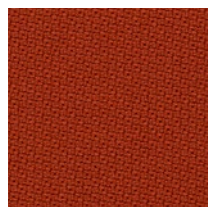
# STG | Step

# STMG | Step Melange

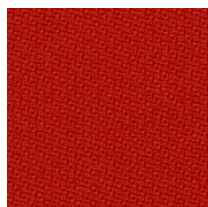

 Cigarette  
& Match

 High flame  
resistance

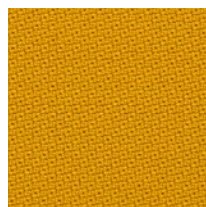
 Environmentally  
friendly

 Confirmed  
safety


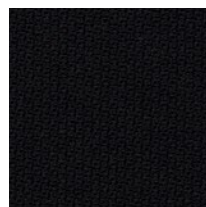
STG63075



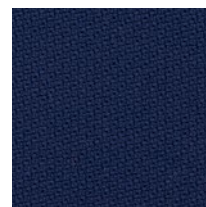
STG63012



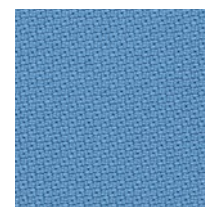
STG62057



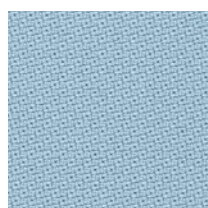
STG60999



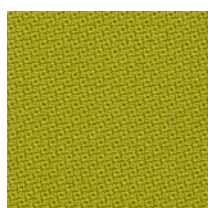
STG65011



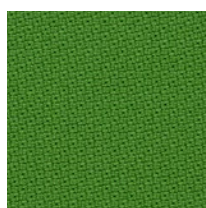
STG66018



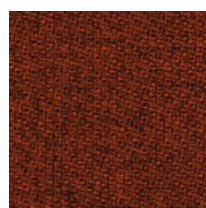
STG67004



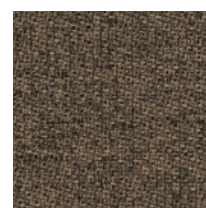
STG68119



STG68120



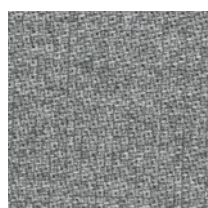
STMG63075



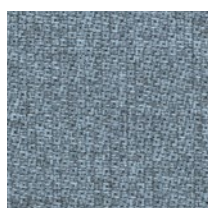
STMG61103



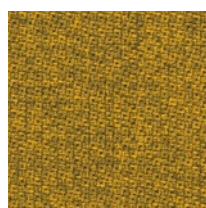
STMG61104



STMG60004



STMG67004



STMG62057



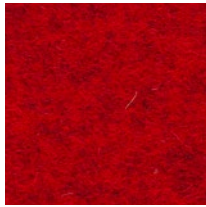
STMG68119

Price group: Grupa cenowa: Preisgruppe: Groupe de prix :	<b>3</b>	Weight: Gramatura: Gewicht: Poids :	335 g/m <sup>2</sup>
Composition: Skład: Material: Composition :	100%	Trevira CS	
Abrasion resistance: Odporność na ścieranie: Scheuerfestigkeit: Résistance à l'abrasion :	100 000	Martindale cycles cykli Martindale Touren Martindale cycles Martindales	Colour fastness to light: Odporność barwy na światło: Lichtechtheit: Résistance de la couleur à la lumière :
Colour fastness to rubbing: Odporność barwy na tarcie: Reibechtheit: Résistance de la couleur au frottement:	EN ISO 105-X12 (wet: 4-5 / dry: 4-5)		Pilling: Odporność na pilling: Pilling: Résistance au boulochage :
Flammability: Trudnozapalność: Brandschutznormen: Résistance au feu :	EN 1021-1, EN 1021-2, BS 5852 Crib 5, BS 7176 medium hazard, DIN 4102 B1, NF P 92-503-5 M1, NF D 60-013 AM 18, Calif. Bull. 117E	Other: Inne: Sonstiges: Autres :	EU Ecolabel certificate Oeko-Tex Standard 100 certificate

Note! Colour patterns illustrated here may differ from the originals. Nowy Styl Group reserves the right to change the constructional features and finishes of products. Information about finishes applicable to each product can be found in Nowy Styl Group's pricelists. | Die tatsächlichen Farben können von den, im Katalog abgebildeten Farben abweichen. Weitere Informationen zu den Oberflächen / Stoffen finden Sie in den Preislisten. Nowy Styl Group behält sich das Recht vor, Designänderungen und Änderungen in den Stoffen und Oberflächen vorzunehmen. | Les coloris réels peuvent légèrement différer des coloris présentés dans ce nuancier. Pour plus d'informations sur les finitions disponibles pour chaque produit, se reporter aux Tarifs Publics. Nowy Styl Group se réserve le droit de modifier les finitions de ses produits.

4

## CUZ | Blazer

Cigarette  
& MatchNatural  
origin

CUZ63



CUZ13



CUZ82



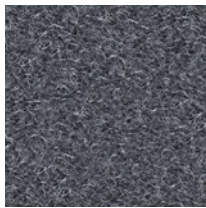
CUZ2W



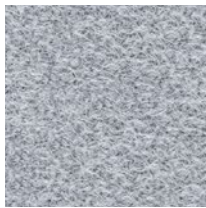
CUZ2Q



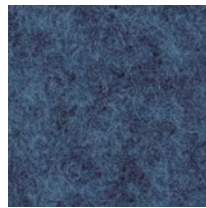
CUZ28



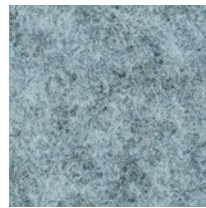
CUZ30



CUZ1E



CUZ1W



CUZ1R



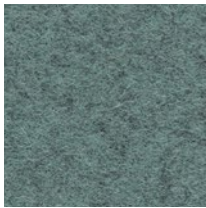
CUZ2Z



CUZ3B



CUZ1P



CUZ33



CUZ53



CUZ1K



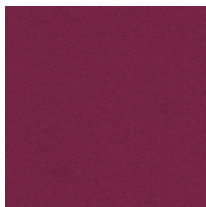
CUZ1N



CUZ1M



CUZ67



CUZ21



CUZ2R

Price group: Grupa cenowa: Preisgruppe: Groupe de prix :	<b>4</b>	Composition: Skład: Material: Composition :	100% virgin wool, non metallic dyestuffs czysta wełna, nie zawiera pigmentów metalicznych Schurwolle, nicht schwermetallhaltige Farbstoffe pure laine vierge, teintures non métalliques
Weight: Gramatura: Gewicht: Poids :	460 g/m <sup>2</sup>	Abrasion resistance: Odporność na ścieranie: Scheuerfestigkeit: Résistance à l'abrasion :	≥50 000 Martindale cycles cykli Martindale Touren Martindale cycles Martindales
Colour fastness to light: Odporność barwy na światło: Lichtechtheit: Résistance de la couleur à la lumière :	EN ISO 105-B02 (5)	Colour fastness to rubbing: Odporność barwy na tarcie: Reibechtheit: Résistance de la couleur au frottement:	EN ISO 105-X12 (wet: 4 / dry: 4)
Flammability: Trudnozapalność: Brandschutznormen: Résistance au feu :	EN 1021-1, EN 1021-2, BS 7176 low hazard, BS 476 Class 1, NF D 60-013		

4 **F | Fame**



Cigarette & Match



High flame resistance



Heavy duty



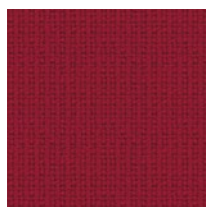
Confirmed safety



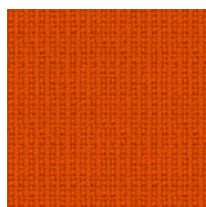
Environmentally friendly



F46



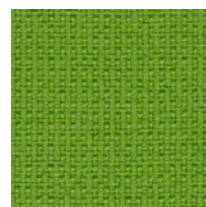
F18



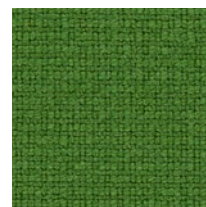
F45



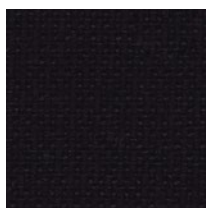
F19



F03



F49



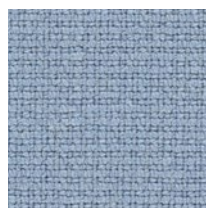
F10



F07



F40



F80



F47

Price group: Grupa cenowa: Preisgruppe: Groupe de prix :	<b>4</b>	Weight: Gramatura: Gewicht: Poids :	450 g/m <sup>2</sup>
Composition: Skład: Material: Composition :	95%	wool wełna Wolle laine	5% polyamide poliamid Polyamid polyamide
Abrasion resistance: Odporność na ścieranie: Scheuerfestigkeit: Résistance à l'abrasion :	200 000	Martindale cycles cykli Martindale Touren Martindale cycles Martindales	
Colour fastness to light: Odporność barwy na światło: Lichtechtheit: Résistance de la couleur à la lumière :	EN ISO 105-B02 (min. 5-7)		
Colour fastness to rubbing: Odporność barwy na tarcie: Reibechtheit: Résistance de la couleur au frottement:	EN ISO 105-X12 (wet: 4-5 / dry: 4-5)	Pilling: Odporność na pilling: Pilling: Résistance au boulochage :	EN ISO 12945-2 (4)
Flammability: Trudnozapalność: Brandschutznormen: Résistance au feu :	EN 1021-1, EN 1021-2 BS 5852 Crib 5 NF D 60-013 AM 18 Önorm B 3825-B1-3 800-Q1 UK Calif. Bull. 117E	Other: Inne: Sonstiges: Autres :	EU Ecolabel certificate Oeko-Tex Standard 100 certificate

Note! Colour patterns illustrated here may differ from the originals. Nowy Styl Group reserves the right to change the constructional features and finishes of products. Information about finishes applicable to each product can be found in Nowy Styl Group's pricelists. | Die tatsächlichen Farben können von den, im Katalog abgebildeten Farben abweichen. Weitere Informationen zu den Oberflächen / Stoffen finden Sie in den Preislisten. Nowy Styl Group behält sich das Recht vor, Designänderungen und Änderungen in den Stoffen und Oberflächen vorzunehmen. | Les coloris réels peuvent légèrement différer des coloris présentés dans ce nuancier. Pour plus d'informations sur les finitions disponibles pour chaque produit, se reporter aux Tarifs Publics. Nowy Styl Group se réserve le droit de modifier les finitions de ses produits.

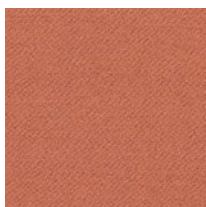


4

## LDS | Synergy

Cigarette  
& MatchHigh abrasion  
resistanceEnvironmentally  
friendly

LDS73



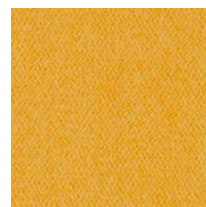
LDS75



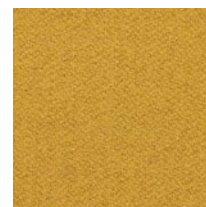
LDS74



LDS45



LDS44



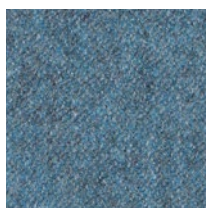
LDS28



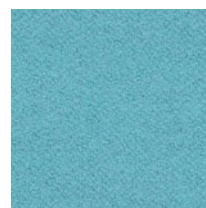
LDS47



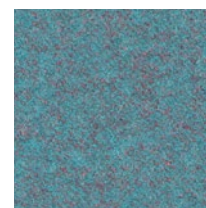
LDS46

LDS14<sup>1</sup>

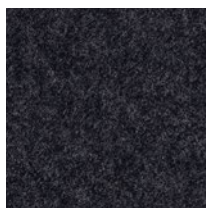
LDS06



LDS55



LDS56

LDS03<sup>1</sup>LDS11<sup>1</sup>LDS17<sup>1</sup>

LDS38

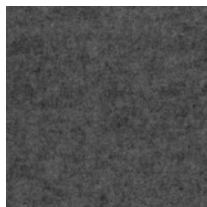
LDS07<sup>1</sup>

LDS08

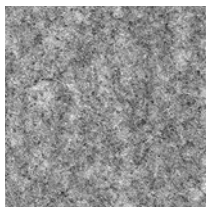
Price group: Grupa cenowa: Preisgruppe: Groupe de prix :	<b>4</b>	Weight: Gramatura: Gewicht: Poids :	400 g/m <sup>2</sup>
Composition: Skład: Material: Composition :	95%	virgin wool czysta wełna Schurwolle pure laine vierge	5% polyamide poliamid Polyamid polyamide
Abrasion resistance: Odporność na ścieranie: Scheuerfestigkeit: Résistance à l'abrasion :	≥100 000	Martindale cycles cykli Martindale Touren Martindale cycles Martindales	
Colour fastness to light: Odporność barwy na światło: Lichtechtheit: Résistance de la couleur à la lumière :	EN ISO 105-B02 (5)	Colour fastness to rubbing: Odporność barwy na tarcie: Reibechtheit: Résistance de la couleur au frottement:	EN ISO 105-X12 (wet: 4 / dry: 4)
Pilling: Odporność na pilling: Pilling: Résistance au boulochage :	EN ISO 12945-2 (4)	Other: Inne: Sonstiges: Autres :	EU Ecolabel certificate
Flammability: Trudnozapalność: Brandschutznormen: Résistance au feu :	EN 1021-1, EN 1021-2, BS 7176 low hazard, NF D 60-013, Önorm A 3800-1 Q1, Önorm B 3825		

EN <sup>1</sup> colour from Landscape Synergy collectionPL <sup>1</sup> kolor należy do kolekcji Landscape SynergyDE <sup>1</sup> Farben der Landscape Synergy CollectionFR <sup>1</sup> le coloris fait partie de la collection Landscape Synergy

# Felt



FC01



FC02

Composition: Skład: Material: Composition :	100%	polyester fiber włókno poliestrowe Polyesterfasern fibre de polyester
Weight: Gramatura: Gewicht: Poids :	1000 g/m <sup>2</sup>	for thickness 7.5 mm dla grubości 7,5 mm bei einer Stärke von 7,5 mm pour une épaisseur de 7,5 mm
Flammability: Trudnozapalność: Brandschutznormen: Résistance au feu :	EN 1021-1, EN 1021-2	

Cigarette  
& MatchRecycled  
origin

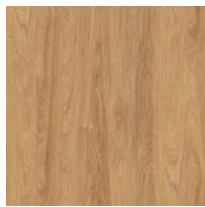
Composition: Skład: Material: Composition :	100%	polyester fiber włókno poliestrowe Polyesterfasern fibre de polyester
Weight: Gramatura: Gewicht: Poids :	650 g/m <sup>2</sup>	for thickness 7.5 mm dla grubości 7,5 mm bei einer Stärke von 7,5 mm pour une épaisseur de 7,5 mm

# Melamine

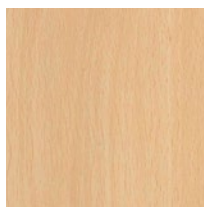
available thickness: 12, 18, 19, 25 mm



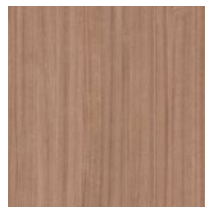
NP Tiepolo Nut



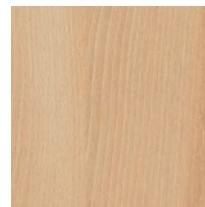
NZ Natural Hickory



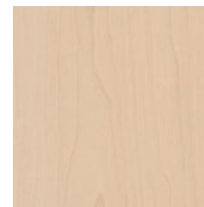
NB Beech Bright



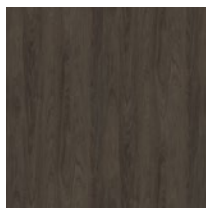
NT Tabac Cherry



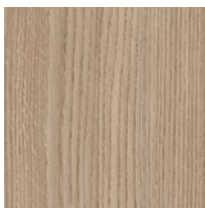
NL Natural  
Country Beech



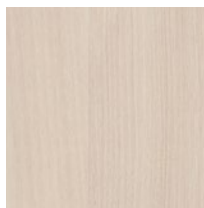
NH Maple



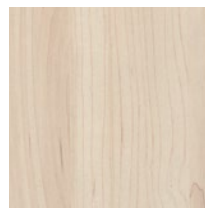
NV Brown Hickory



NA Aragon Oak



NJ Acacia Light



NC Champagne  
Hard Maple

**EN** melamine faced chipboard (MFC), class E1

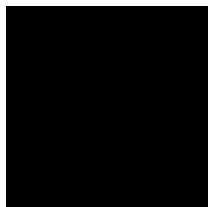
**PL** płyta meblowa dwustronnie melaminowana, klasa E1

**DE** Beidseitig melaminbeschichtete Spanplatte der Güteklasse E1

**FR** panneau de particules mélaminé double face, de la classe E1

# Melamine

available thickness: 12, 18, 19, 25 mm



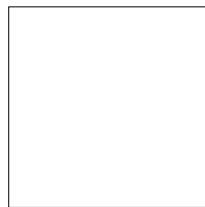
CC Black



MS Slate



MP Platinum



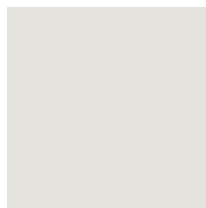
BI White



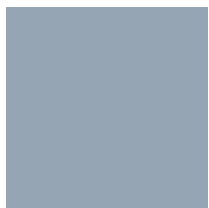
NM Diamond Grey



BZ Grey Basalt



MB White Grey



NR Denim Blue



NS Fjord Green



NU Blood Orange

**EN** melamine faced chipboard (MFC), class E1

**PL** płyta meblowa dwustronnie melaminowana, klasa E1

**DE** Beidseitig melaminbeschichtete Spanplatte der Güteklasse E1

**FR** panneau de particules mélaminé double face, de la classe E1

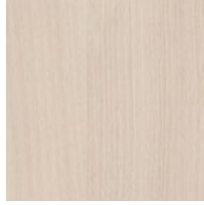
## Laser edge ABS



NB Beech Bright



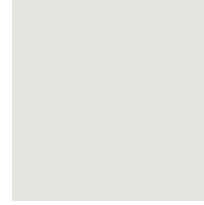
NH Maple



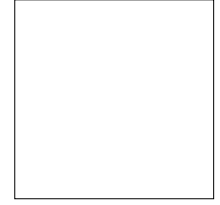
NJ Acacia Light



MP Platinum

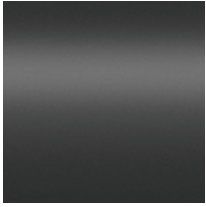


MB White Grey

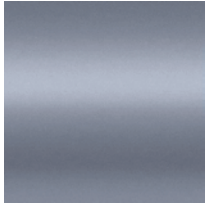


BI White

# Metal



**RAL 9005**  
Black  
CZ, BL/BLT, Y



**RAL 7015**  
Grey  
GY



**RAL 9006**  
Aluminium  
AL, ALU, WA, X



**RAL 9016**  
White  
BI, WT/WTT, W