

3

STG | Step

STMG | Step Melange



Cigarette & Match



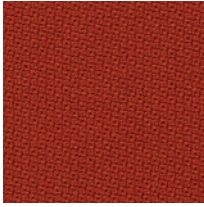
High flame resistance



Environmentally friendly



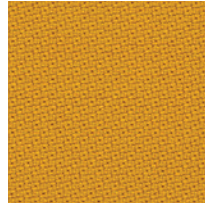
Confirmed safety



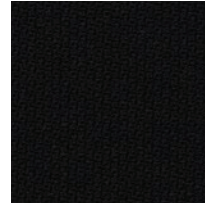
STG63075



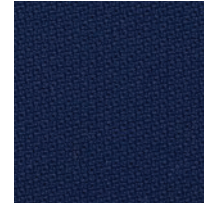
STG63012



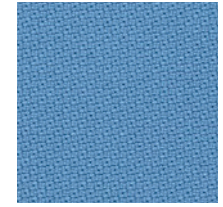
STG62057



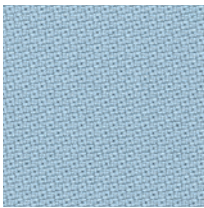
STG60999



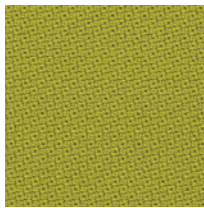
STG65011



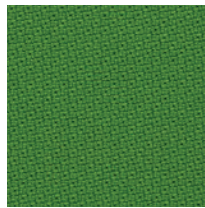
STG66018



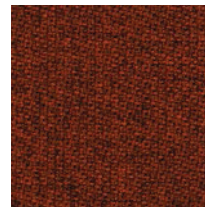
STG67004



STG68119



STG68120



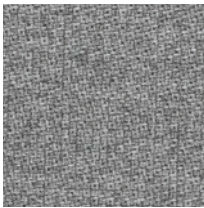
STMG63075



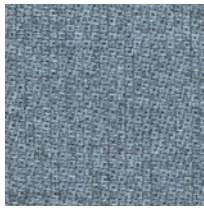
STMG61103



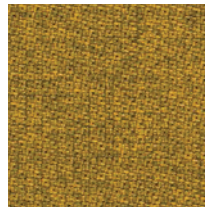
STMG61104



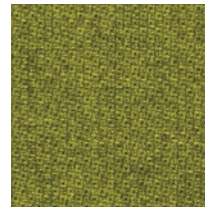
STMG60004



STMG67004



STMG62057



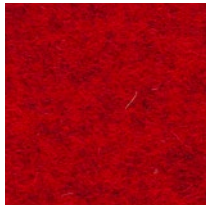
STMG68119

Price group: Grupa cenowa: Preisgruppe: Groupe de prix :	3	Weight: Gramatura: Gewicht: Poids :	335 g/m ²
Composition: Skład: Material: Composition :	100%	Trevira CS	
Abrasion resistance: Odporność na ścieranie: Scheuerfestigkeit: Résistance à l'abrasion :	100 000	Martindale cycles cykli Martindale Touren Martindale cycles Martindales	Colour fastness to light: Odporność barwy na światło: Lichtechtheit: Résistance de la couleur à la lumière :
Colour fastness to rubbing: Odporność barwy na tarcie: Reibechtheit: Résistance de la couleur au frottement:	EN ISO 105-X12 (wet: 4-5 / dry: 4-5)		Pilling: Odporność na pilling: Pilling: Résistance au boulochage :
Flammability: Trudnozapalność: Brandschutznormen: Résistance au feu :	EN 1021-1, EN 1021-2, BS 5852 Crib 5, BS 7176 medium hazard, DIN 4102 B1, NF P 92-503-5 M1, NF D 60-013 AM 18, Calif. Bull. 117E	Other: Inne: Sonstiges: Autres :	EU Ecolabel certificate Oeko-Tex Standard 100 certificate

Note! Colour patterns illustrated here may differ from the originals. Nowy Styl Group reserves the right to change the constructional features and finishes of products. Information about finishes applicable to each product can be found in Nowy Styl Group's pricelists. | Die tatsächlichen Farben können von den, im Katalog abgebildeten Farben abweichen. Weitere Informationen zu den Oberflächen / Stoffen finden Sie in den Preislisten. Nowy Styl Group behält sich das Recht vor, Designänderungen und Änderungen in den Stoffen und Oberflächen vorzunehmen. | Les coloris réels peuvent légèrement différer des coloris présentés dans ce nuancier. Pour plus d'informations sur les finitions disponibles pour chaque produit, se reporter aux Tarifs Publics. Nowy Styl Group se réserve le droit de modifier les finitions de ses produit

4

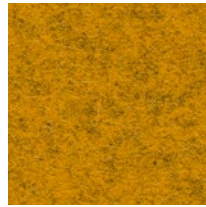
CUZ | Blazer

Cigarette
& MatchNatural
origin

CUZ63



CUZ13



CUZ82



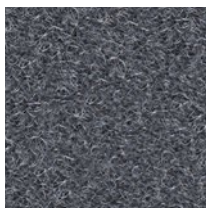
CUZ2W



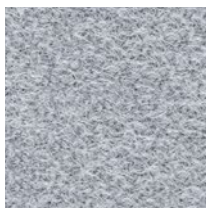
CUZ2Q



CUZ28



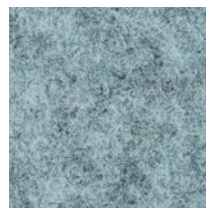
CUZ30



CUZ1E



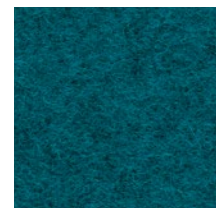
CUZ1W



CUZ1R



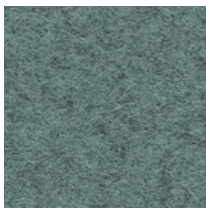
CUZ2Z



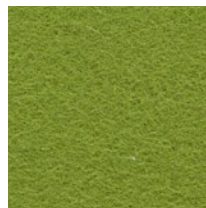
CUZ3B



CUZ1P



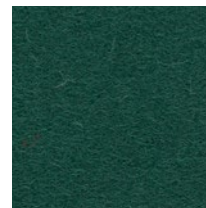
CUZ33



CUZ53



CUZ1K



CUZ1N



CUZ1M



CUZ67



CUZ21



CUZ2R

Price group:
Grupa cenowa:
Preisgruppe:
Groupe de prix :

4

Composition:
Skład:
Material:
Composition :100% virgin wool, non metallic dyestuffs
czysta wełna, nie zawiera pigmentów metalicznych
Schurwolle, nicht schwermetallhaltige Farbstoffe
pure laine vierge, teintures non métalliquesWeight:
Gramatura:
Gewicht:
Poids :460 g/m²Abrasion resistance:
Odporność na ścieranie:
Scheuerfestigkeit:
Résistance à l'abrasion :

≥50 000

Martindale cycles
cykli Martindale
Touren Martindale
cycles MartindalesColour fastness to light:
Odporność barwy na
światło:
Lichtechtheit:
Résistance de la couleur à la
lumière :EN ISO 105-B02
(5)Colour fastness to rubbing:
Odporność barwy na tarcie:
Reibechtheit:
Résistance de la couleur au frottement:EN ISO 105-X12
(wet: 4 / dry: 4)Flammability:
Trudnozapalność:
Brandschutznormen:
Résistance au feu :

EN 1021-1, EN 1021-2, BS 7176 low hazard, BS 476 Class 1, NF D 60-013

4 F | Fame



Cigarette & Match



High flame resistance



Heavy duty



Confirmed safety



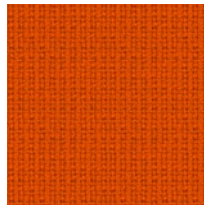
Environmentally friendly



F46



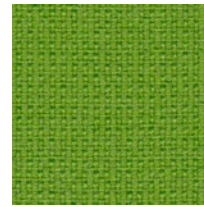
F18



F45



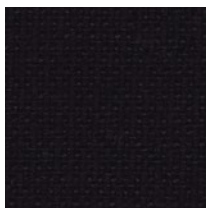
F19



F03



F49



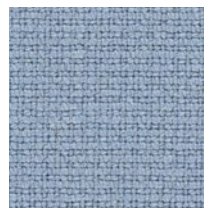
F10



F07



F40



F80

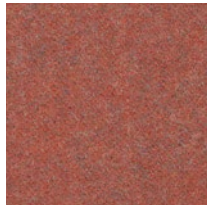


F47

Price group: Grupa cenowa: Preisgruppe: Groupe de prix :	4	Weight: Gramatura: Gewicht: Poids :	450 g/m ²
Composition: Skład: Material: Composition :	95%	wool wełna Wolle laine	5% polyamide poliamid Polyamid polyamide
Abrasion resistance: Odporność na ścieranie: Scheuerfestigkeit: Résistance à l'abrasion :	200 000	Martindale cycles cykli Martindale Touren Martindale cycles Martindales	
Colour fastness to light: Odporność barwy na światło: Lichtechtheit: Résistance de la couleur à la lumière :	EN ISO 105-B02 (min. 5-7)		
Colour fastness to rubbing: Odporność barwy na tarcie: Reibechtheit: Résistance de la couleur au frottement:	EN ISO 105-X12 (wet: 4-5 / dry: 4-5)	Pilling: Odporność na pilling: Pilling: Résistance au boulochage :	EN ISO 12945-2 (4)
Flammability: Trudnozapalność: Brandschutznormen: Résistance au feu :	EN 1021-1, EN 1021-2 BS 5852 Crib 5 NF D 60-013 AM 18 Önorm B 3825-B1-3 800-Q1 UK Calif. Bull. 117E	Other: Inne: Sonstiges: Autres :	EU Ecolabel certificate Oeko-Tex Standard 100 certificate

Note! Colour patterns illustrated here may differ from the originals. Nowy Styl Group reserves the right to change the constructional features and finishes of products. Information about finishes applicable to each product can be found in Nowy Styl Group's pricelists. | Die tatsächlichen Farben können von den, im Katalog abgebildeten Farben abweichen. Weitere Informationen zu den Oberflächen / Stoffen finden Sie in den Preislisten. Nowy Styl Group behält sich das Recht vor, Designänderungen und Änderungen in den Stoffen und Oberflächen vorzunehmen. | Les coloris réels peuvent légèrement différer des coloris présentés dans ce nuancier. Pour plus d'informations sur les finitions disponibles pour chaque produit, se reporter aux Tarifs Publics. Nowy Styl Group se réserve le droit de modifier les finitions de ses produits.

4

LDS | SynergyCigarette
& MatchHigh abrasion
resistanceEnvironmentally
friendly

LDS73



LDS75



LDS74



LDS45



LDS44



LDS28



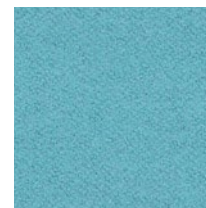
LDS47



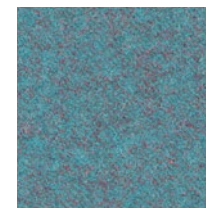
LDS46

LDS14¹

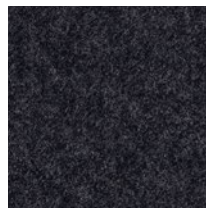
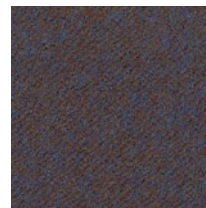
LDS06



LDS55



LDS56

LDS03¹LDS11¹LDS17¹

LDS38

LDS07¹

LDS08

Price group: Grupa cenowa: Preisgruppe: Groupe de prix :	4	Weight: Gramatura: Gewicht: Poids :	400 g/m ²
Composition: Skład: Material: Composition :	95%	virgin wool czysta wełna Schurwolle pure laine vierge	5% polyamide poliamid Polyamid polyamide
Abrasion resistance: Odporność na ścieranie: Scheuerfestigkeit: Résistance à l'abrasion :	≥100 000	Martindale cycles cykli Martindale Touren Martindale cycles Martindales	
Colour fastness to light: Odporność barwy na światło: Lichtechtheit: Résistance de la couleur à la lumière :	EN ISO 105-B02 (5)	Colour fastness to rubbing: Odporność barwy na tarcie: Reibechtheit: Résistance de la couleur au frottement:	EN ISO 105-X12 (wet: 4 / dry: 4)
Pilling: Odporność na pilling: Pilling: Résistance au boulochage :	EN ISO 12945-2 (4)	Other: Inne: Sonstiges: Autres :	EU Ecolabel certificate
Flammability: Trudnozupalność: Brandschutznormen: Résistance au feu :	EN 1021-1, EN 1021-2, BS 7176 low hazard, NF D 60-013, Önorm A 3800-1 Q1, Önorm B 3825		

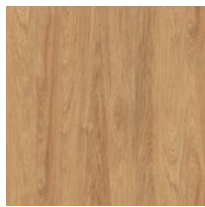
EN ¹ colour from Landscape Synergy collectionPL ¹ kolor należy do kolekcji Landscape SynergyDE ¹ Farben der Landscape Synergy CollectionFR ¹ le coloris fait partie de la collection Landscape Synergy

Melamine

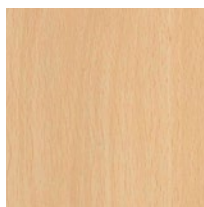
available thickness: 12, 18, 19, 25 mm



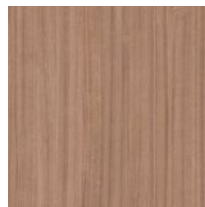
NP Tiepolo Nut



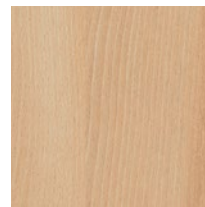
NZ Natural Hickory



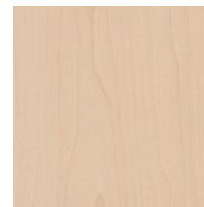
NB Beech Bright



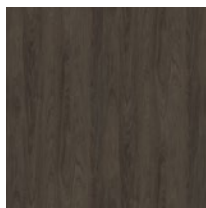
NT Tabac Cherry



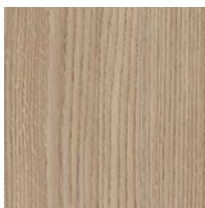
NL Natural
Country Beech



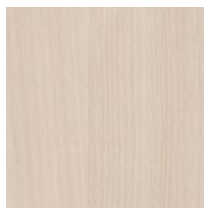
NH Maple



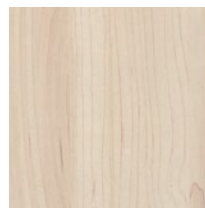
NV Brown Hickory



NA Aragon Oak



NJ Acacia Light



NC Champagne
Hard Maple

EN melamine faced chipboard (MFC), class E1

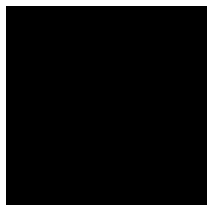
PL płyta meblowa dwustronnie melaminowana, klasa E1

DE Beidseitig melaminbeschichtete Spanplatte der Güteklasse E1

FR panneau de particules mélaminé double face, de la classe E1

Melamine

available thickness: 12, 18, 19, 25 mm



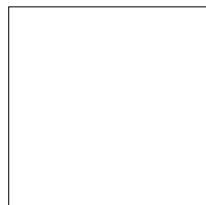
CC Black



MS Slate



MP Platinum



BI White



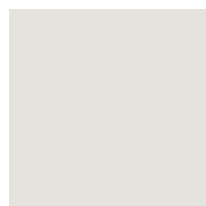
NM Diamond Grey



BZ Grey Basalt



NK Cashmere



MB White Grey



NR Denim Blue



NS Fjord Green



NU Blood Orange



NF Saffron

EN melamine faced chipboard (MFC), class E1

PL płyta meblowa dwustronnie melaminowana, klasa E1

DE Beidseitig melaminbeschichtete Spanplatte der Güteklasse E1

FR panneau de particules mélaminé double face, de la classe E1

NM, NK, NS, NR, NU, NF

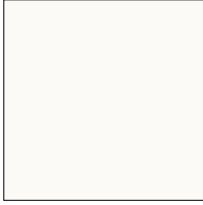
EN only for doors fronts

PL tylko dla frontów drzwiczek

DE nur für Fronten erhältlich

FR seulement pour les fronts

Laminate



**FU White Gloss
(whiteboard)**

EN only for doors fronts
PL tylko dla frontów drzwiczek
DE nur für Fronten erhältlich
FR seulement pour les fronts

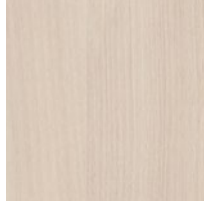
Laser edge ABS



NB Beech Bright



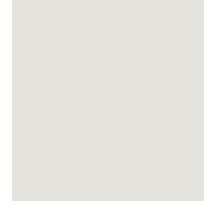
NH Maple



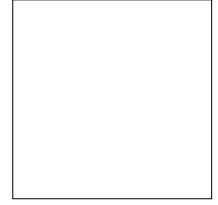
NJ Acacia Light



MP Platinum

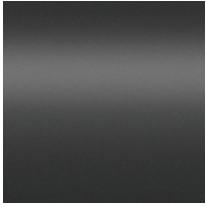


MB White Grey

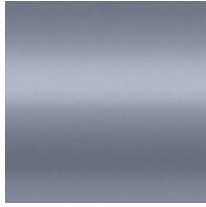


BI White

Metal



RAL 9005
Black
CZ, BL/BLT, Y



RAL 7015
Grey
GY



RAL 9006
Aluminium
AL, ALU, WA, X



RAL 9016
White
BI, WT/WTT, W