

SQart

Workstation



ELCOND
ENGINEERING

PISARNIŠKO POHIŠTVO

www.elcond.si

01/583 73 73

1 Bondai | BN



Cigarette & Match



High flame resistance



High abrasion resistance



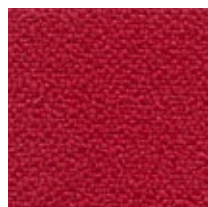
Confirmed safety



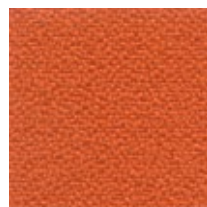
BN4017



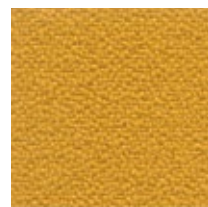
BN4007



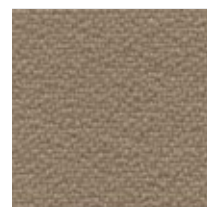
BN4011



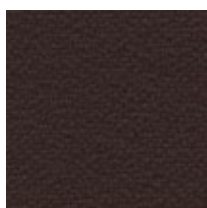
BN3012



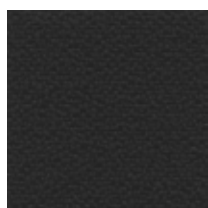
BN3005



BN1008



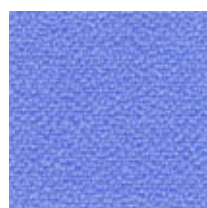
BN2036



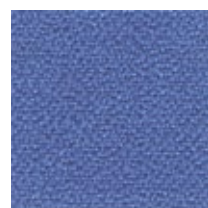
BN8033



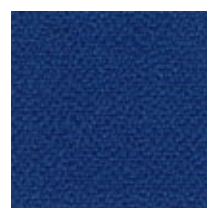
BN8078



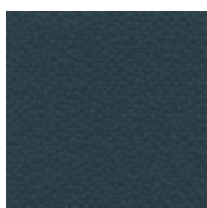
BN6006



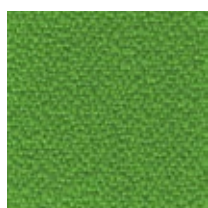
BN6003



BN6016



BN8010



BN7048

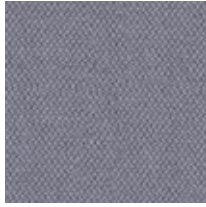
Price group: Grupa cenowa: Preisgruppe: Groupe de prix :	1	Weight: Gramatura: Gewicht: Poids :	250 g/m ²
Composition: Skład: Material: Composition :	100%	polyester poliester Polyester polyester	
Abrasion resistance: Odporność na ścieranie: Scheuerfestigkeit: Résistance à l'abrasion :	150 000	Martindale cycles cykli Martindale Touren Martindale cycles Martindales	
Colour fastness to light: Odporność barwy na światło: Lichtechtheit: Résistance de la couleur à la lumière :	EN ISO 105-B02 (min. 6)	Colour fastness to rubbing: Odporność barwy na tarcie: Reibechtheit: Résistance de la couleur au frottement:	EN ISO 105-X12 (wet: 4-5 / dry: 4-5)
Pilling: Odporność na pilling: Pilling: Résistance au boulochage :	EN ISO 12945-2 (5)	Flammability: Trudnozupalność: Brandschutznormen: Résistance au feu :	EN 1021-1, EN 1021-2, BS 5852 Crib 5, BS 7176 medium hazard
Other: Inne: Sonstiges: Autres :	Oeko-Tex Standard 100 certificate		

Note! Colour patterns illustrated here may differ from the originals. Nowy Styl Group reserves the right to change the constructional features and finishes of products. Information about finishes applicable to each product can be found in Nowy Styl Group's pricelists. | Die tatsächlichen Farben können von den, im Katalog abgebildeten Farben abweichen. Weitere Informationen zu den Oberflächen / Stoffen finden Sie in den Preislisten. Nowy Styl Group behält sich das Recht vor, Designänderungen und Änderungen in den Stoffen und Oberflächen vorzunehmen. | Les coloris réels peuvent légèrement différer des coloris présentés dans ce nuancier. Pour plus d'informations sur les finitions disponibles pour chaque produit, se reporter aux Tarifs Publics. Nowy Styl Group se réserve le droit de modifier les finitions de ses produits.

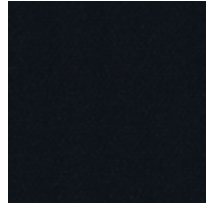
1 Era | CSE

Cigarette
& MatchHigh abrasion
resistanceConfirmed
safety

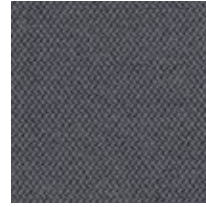
CSE19



CSE11



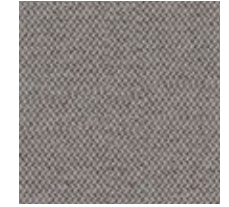
CSE14



CSE13



CSE21



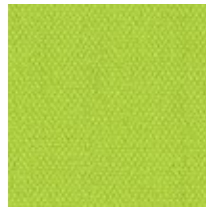
CSE02



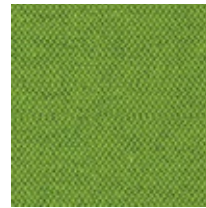
CSE01



CSE03



CSE07



CSE16



CSE20



CSE10

Price group:
Grupa cenowa:
Preisgruppe:
Groupe de prix :

1

Composition:
Skład:
Material:
Composition :

100%

polyester, non metallic dyestuffs
poliester, nie zawiera pigmentów metalicznych
Polyester, nicht schwermetallhaltige Farbstoffe
polyester, teintures non métalliques

Weight:
Gramatura:
Gewicht:
Poids :

320 g/m²

Abrasion resistance:
Odporność na ścieranie:
Scheuerfestigkeit:
Résistance à l'abrasion :

≥100 000

Martindale cycles
cykli Martindale
Touren Martindale
cycles Martindales

Colour fastness to light:
Odporność barwy na światło:
Lichtechtheit:
Résistance de la couleur à la lumière :

EN ISO 105-B02
(min. 5)

Flammability:
Trudnozapalność:
Brandschutznormen:
Résistance au feu :

EN 1021-1,
EN 1021-2
BS 7176 low hazard

Other:
Inne:
Sonstiges:
Autres :

Oeko-Tex Standard 100
certificate

1 Lucia | YB

Cigarette
& MatchRecycled
originEnvironmentally
friendlyConfirmed
safety

YB105



YB130



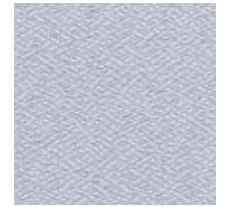
YB093



YB156



YB200



YB086



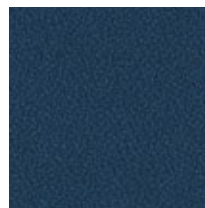
YB097



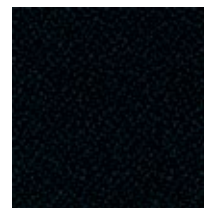
YB069



YB021



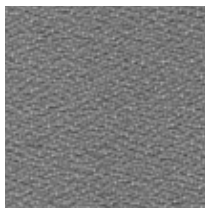
YB026



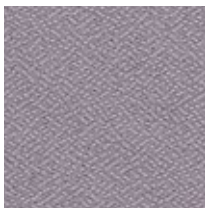
YB009



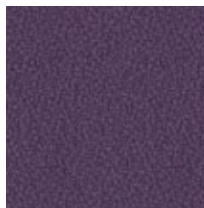
YB046



YB094



YB038



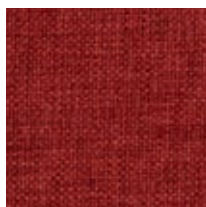
YB090

Price group: Grupa cenowa: Preisgruppe: Groupe de prix :	1	Weight: Gramatura: Gewicht: Poids :	260 g/m ²
Composition: Skład: Material: Composition :	100%	recycled polyester, non metallic dyestuffs poliester pochodzący z recyklingu, nie zawiera pigmentów metalicznych recycltes Polyester, nicht schwermetallhaltige Farbstoffe polyester recyclé, teintures non métalliques	
Abrasion resistance: Odporność na ścieranie: Scheuerfestigkeit: Résistance à l'abrasion :	50 000	Martindale cycles cykli Martindale Touren Martindale cycles Martindales	
Colour fastness to light: Odporność barwy na światło: Lichtechtheit: Résistance de la couleur à la lumière :	EN ISO 105-B02 (6)	Flammability: Trudnozapałność: Brandschutznormen: Résistance au feu :	EN 1021-1, EN 1021-2 BS 7176 low hazard BS 476 Class 1
Other: Inne: Sonstiges: Autres :	EU Ecolabel certificate Oeko-Tex Standard 100 certificate		

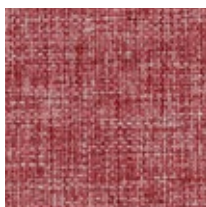
Note! Colour patterns illustrated here may differ from the originals. Nowy Styl Group reserves the right to change the constructional features and finishes of products. Information about finishes applicable to each product can be found in Nowy Styl Group's pricelists. | Die tatsächlichen Farben können von den, im Katalog abgebildeten Farben abweichen. Weitere Informationen zu den Oberflächen / Stoffen finden Sie in den Preislisten. Nowy Styl Group behält sich das Recht vor, Designänderungen und Änderungen in den Stoffen und Oberflächen vorzunehmen. | Les coloris réels peuvent légèrement différer des coloris présentés dans ce nuancier. Pour plus d'informations sur les finitions disponibles pour chaque produit, se reporter aux Tarifs Publics. Nowy Styl Group se réserve le droit de modifier les finitions de ses produits.

1

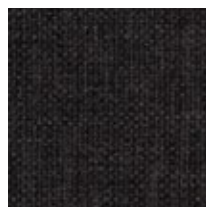
Oflum | OL

Cigarette
& MatchHigh abrasion
resistanceConfirmed
safety

OL05



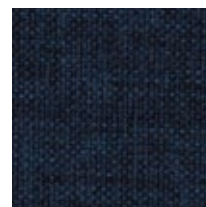
OL04



OL07



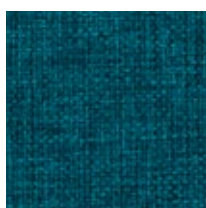
OL08



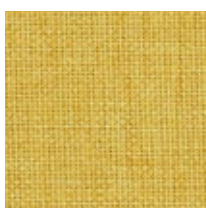
OL01



OL06



OL03



OL09



OL02

Price group:
Grupa cenowa:
Preisgruppe:
Groupe de prix :

1

Composition:
Skład:
Material:
Composition :

100%

polyester
poliester
Polyester
polyesterWeight:
Gramatura:
Gewicht:
Poids :310 g/m²Abrasion resistance:
Odporność na ścieranie:
Scheuerfestigkeit:
Résistance à l'abrasion :

162 500

Martindale cycles
cykli Martindale
Touren Martindale
cycles MartindalesColour fastness to light:
Odporność barwy na światło:
Lichtechtheit:
Résistance de la couleur à la lumière :EN ISO 105-B02
(5)Colour fastness to rubbing:
Odporność barwy na tarcie:
Reibechtheit:
Résistance de la couleur au frottement :EN ISO 105-X12
(wet: 4-5 / dry: 4-5)Pilling:
Odporność na pilling:
Pilling:
Résistance au boulochage :EN ISO 12945-2
(4-5)Flammability:
Trudnozapalność:
Brandschutznormen:
Résistance au feu :EN 1021-1,
EN 1021-2Other:
Inne:
Sonstiges:
Autres :Oeko-Tex
Standard 100
certificate

1 Sempre | SM

Cigarette
& MatchHigh abrasion
resistanceConfirmed
safety

SM12



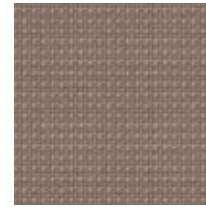
SM09



SM10



SM11



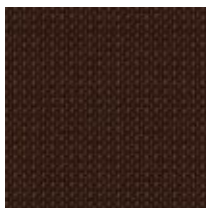
SM04



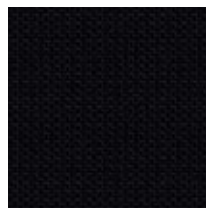
SM08



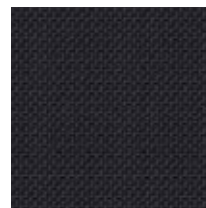
SM06



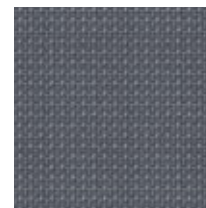
SM05



SM01



SM02



SM03



SM07

Price group:
Grupa cenowa:
Preisgruppe:
Groupe de prix :

1

Composition:
Skład:
Material:
Composition :

100%

polyester
poliester
Polyester
polyester

Weight:
Gramatura:
Gewicht:
Poids :

366 g/m²

Abrasion resistance:
Odporność na ścieranie:
Scheuerfestigkeit:
Résistance à l'abrasion :

155 000 ± 5 000

Martindale cycles
cykli Martindale
Touren Martindale
cycles Martindales

Colour fastness to light:
Odporność barwy na światło:
Lichtechtheit:
Résistance de la couleur à la lumière :

EN ISO 105-B02
(3-4)

Colour fastness to rubbing:
Odporność barwy na tarcie:
Reibechtheit:
Résistance de la couleur au frottement :

EN ISO 105-X12
(wet: 4-5 / dry: 4-5)

Pilling:
Odporność na pilling:
Pilling:
Résistance au boulochage :

EN ISO 12945-2
(4-5)

Flammability:
Trudnozapalność:
Brandschutznormen:
Résistance au feu :

EN 1021-1,
EN 1021-2

Other:
Inne:
Sonstiges:
Autres :

Oeko-Tex
Standard 100
certificate

1 Sempre Melange | SMM



Cigarette & Match



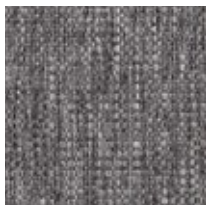
High abrasion resistance



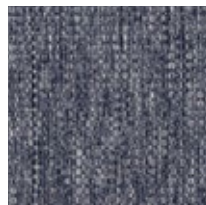
Confirmed safety



SMM01



SMM02



SMM03

Price group: Grupa cenowa: Preisgruppe: Groupe de prix :	1		
Composition: Skład: Material: Composition :	100%	polyester poliester Polyester polyester	
Weight: Gramatura: Gewicht: Poids :	375 g/m ²		
Abrasion resistance: Odporność na ścieranie: Scheuerfestigkeit: Résistance à l'abrasion :	125 000	Martindale cycles cykli Martindale Touren Martindale cycles Martindales	
Colour fastness to light: Odporność barwy na światło: Lichtechtheit: Résistance de la couleur à la lumière :	EN ISO 105-B02 (4-5)		
Colour fastness to rubbing: Odporność barwy na tarcie: Reibechtheit: Résistance de la couleur au frottement :	EN ISO 105-X12 (wet: 4-5 / dry: 4-5)	Pilling: Odporność na pilling: Pilling: Résistance au boulochage :	EN ISO 12945-2 (5)
Flammability: Trudnozupalność: Brandschutznormen: Résistance au feu :	EN 1021-1, EN 1021-2	Other: Inne: Sonstiges: Autres :	Oeko-Tex Standard 100 certificate

Note! Colour patterns illustrated here may differ from the originals. Nowy Styl Group reserves the right to change the constructional features and finishes of products. Information about finishes applicable to each product can be found in Nowy Styl Group's pricelists. | Die tatsächlichen Farben können von den, im Katalog abgebildeten Farben abweichen. Weitere Informationen zu den Oberflächen / Stoffen finden Sie in den Preislisten. Nowy Styl Group behält sich das Recht vor, Designänderungen und Änderungen in den Stoffen und Oberflächen vorzunehmen. | Les coloris réels peuvent légèrement différer des coloris présentés dans ce nuancier. Pour plus d'informations sur les finitions disponibles pour chaque produit, se reporter aux Tarifs Publics. Nowy Styl Group se réserve le droit de modifier les finitions de ses produits.

2

Felicity | FLG

Cigarette
& MatchRecycled
originEnvironmentally
friendlyConfirmed
safety

FLG64190



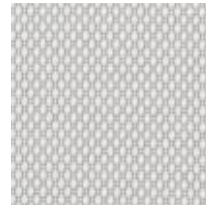
FLG64189



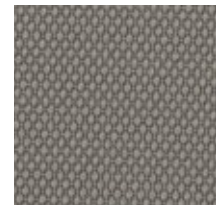
FLG61163



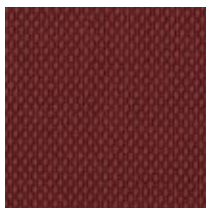
FLG62080



FLG60105



FLG60106



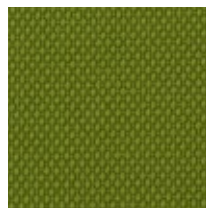
FLG64191



FLG61165



FLG61164



FLG68179



FLG67083



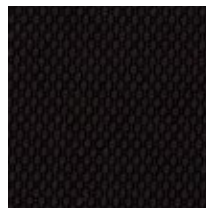
FLG67079



FLG66161



FLG60107



FLG60999

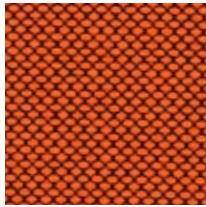
Price group: Grupa cenowa: Preisgruppe: Groupe de prix :	2	Weight: Gramatura: Gewicht: Poids :	307 g/m ²
Composition: Skład: Material: Composition :	100%	post-consumer recycled polyester poliester pochodzący z recyklingu recycltes Post-Consumer-Polyester polyester recyclé de récupération	
Abrasion resistance: Odporność na ścieranie: Scheuerfestigkeit: Résistance à l'abrasion :	90 000	Martindale cycles cykli Martindale Touren Martindale cycles Martindales	
Colour fastness to light: Odporność barwy na światło: Lichtechtheit: Résistance de la couleur à la lumière :	EN ISO 105-B02 (min. 5-7)		
Colour fastness to rubbing: Odporność barwy na tarcie: Reibechtheit: Résistance de la couleur au frottement :	EN ISO 105-X12 (wet: 4-5 / dry: 4-5)	Pilling: Odporność na pilling: Pilling: Résistance au boulochage :	EN ISO 12945-2 (5)
Flammability: Trudnozapalność: Brandschutznormen: Résistance au feu :	EN 1021-1, EN 1021-2 Calif. Bull. 117E	Other: Inne: Sonstiges: Autres :	EU Ecolabel certificate Cradle to Cradle certificate Oeko-Tex Standard 100 certificate

Note! Colour patterns illustrated here may differ from the originals. Nowy Styl Group reserves the right to change the constructional features and finishes of products. Information about finishes applicable to each product can be found in Nowy Styl Group's pricelists. | Die tatsächlichen Farben können von den, im Katalog abgebildeten Farben abweichen. Weitere Informationen zu den Oberflächen / Stoffen finden Sie in den Preislisten. Nowy Styl Group behält sich das Recht vor, Designänderungen und Änderungen in den Stoffen und Oberflächen vorzunehmen. | Les coloris réels peuvent légèrement différer des coloris présentés dans ce nuancier. Pour plus d'informations sur les finitions disponibles pour chaque produit, se reporter aux Tarifs Publics. Nowy Styl Group se réserve le droit de modifier les finitions de ses produits.

2 Radio | RD(X)F

Cigarette
& MatchHigh flame
resistanceConfirmed
safety

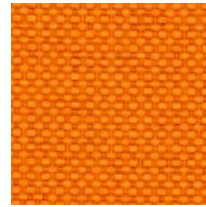
RDF4028



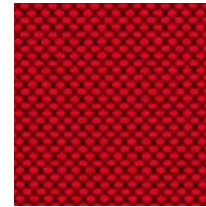
RDXF3594



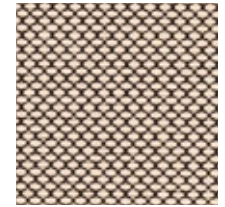
RDF3094



RDF3082



RDXF4528



RDXF1510



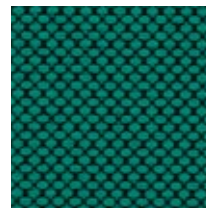
RDF1008



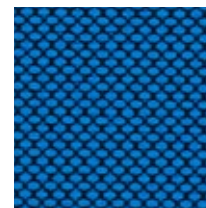
RDF7025



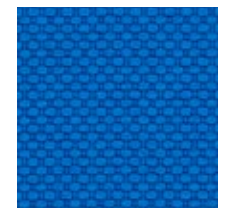
RDF7008



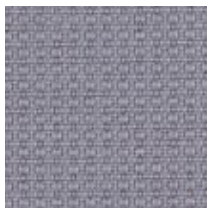
RDXF7508



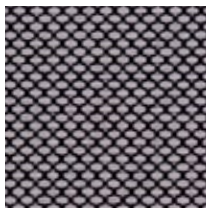
RDXF6575



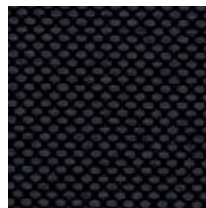
RDF6075



RDF8032



RDXF8532



RDXF8517



RDF8033

Price group: Grupa cenowa: Preisgruppe: Groupe de prix :	2	Weight: Gramatura: Gewicht: Poids :	400 g/m ²
Composition: Skład: Material: Composition :	100%	polyester FR poliester FR Polyester FR polyester FR	
Abrasion resistance: Odporność na ścieranie: Scheuerfestigkeit: Résistance à l'abrasion :	80 000	Martindale cycles cykli Martindale Touren Martindale cycles Martindales	
Colour fastness to light: Odporność barwy na światło: Lichtechtheit: Résistance de la couleur à la lumière :	EN ISO 105-B02 (6)	Colour fastness to rubbing: Odporność barwy na tarcie: Reibechtheit: Résistance de la couleur au frottement :	EN ISO 105-X12 (wet: 4-5 / dry: 4-5)
Flammability: Trudnozupalność: Brandschutznormen: Résistance au feu :	EN 1021-1, EN 1021-2, BS 5852 Crib 5 BS 7176 medium hazard DIN 4102 B1, NF D 60-013 AM 18, NF P 92-501-7 M1 Önorm A 3800-1 Class B1-Q1-TR1 Önorm B 3825, Calif. Bull. 117E		
Other: Inne: Sonstiges: Autres :	Oeko-Tex Standard 100 certificate		

Note! Colour patterns illustrated here may differ from the originals. Nowy Styl Group reserves the right to change the constructional features and finishes of products. Information about finishes applicable to each product can be found in Nowy Styl Group's pricelists. | Die tatsächlichen Farben können von den, im Katalog abgebildeten Farben abweichen. Weitere Informationen zu den Oberflächen / Stoffen finden Sie in den Preislisten. Nowy Styl Group behält sich das Recht vor, Designänderungen und Änderungen in den Stoffen und Oberflächen vorzunehmen. | Les coloris réels peuvent légèrement différer des coloris présentés dans ce nuancier. Pour plus d'informations sur les finitions disponibles pour chaque produit, se reporter aux Tarifs Publics. Nowy Styl Group se réserve le droit de modifier les finitions de ses produits.

2 Xtreme | XR



Cigarette & Match



High flame resistance



Environmentally friendly



Recycled origin



High abrasion resistance



Confirmed safety



XR136



XR079



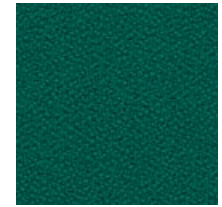
XR076



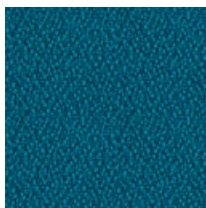
XR072



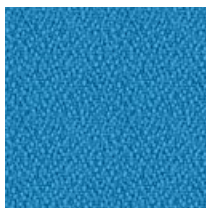
XR108



XR161



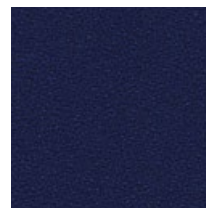
XR160



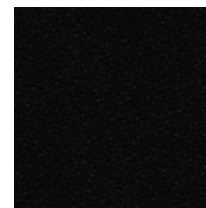
XR073



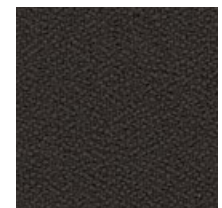
XR005



XR026



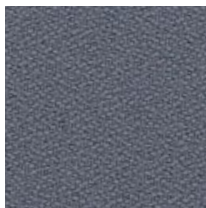
XR009



XR046



XR081



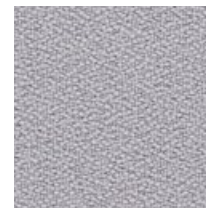
XR171



XR095



XR102



XR094

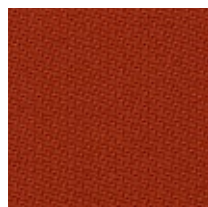
Price group: Grupa cenowa: Preisgruppe: Groupe de prix :	2	Weight: Gramatura: Gewicht: Poids :	310 g/m ²
Composition: Skład: Material: Composition :	100%	recycled flame retardant polyester, non metallic dyestuffs trudnopalny poliester pochodzący z recyklingu, nie zawiera pigmentów metalicznych recycltes, schwerentflammbares Polyester, nicht schwermetallhaltige Farbstoffe polyester recyclé ignifuge, teintures non métalliques	
Abrasion resistance: Odporność na ścieranie: Scheuerfestigkeit: Résistance à l'abrasion :	≥100 000	Martindale cycles cykli Martindale Touren Martindale cycles Martindales	Colour fastness to light: Odporność barwy na światło: Lichtechtheit: Résistance de la couleur à la lumière :
Colour fastness to rubbing: Odporność barwy na tarcie: Reibechtheit: Résistance de la couleur au frottement :	EN ISO 105-X12 (wet: 4 / dry: 4)		Pilling: Odporność na pilling: Pilling: Résistance au boulochage :
Flammability: Trudnozapalność: Brandschutznormen: Résistance au feu :	EN 1021-1, EN 1021-2 BS 5852 Crib 5 BS 7176 medium hazard BS 476 Class 1 DIN 4102 B1		Other: Inne: Sonstiges: Autres :
			EU Ecolabel certificate Oeko-Tex Standard 100 certificate

Note! Colour patterns illustrated here may differ from the originals. Nowy Styl Group reserves the right to change the constructional features and finishes of products. Information about finishes applicable to each product can be found in Nowy Styl Group's pricelists. | Die tatsächlichen Farben können von den, im Katalog abgebildeten Farben abweichen. Weitere Informationen zu den Oberflächen / Stoffen finden Sie in den Preislisten. Nowy Styl Group behält sich das Recht vor, Designänderungen und Änderungen in den Stoffen und Oberflächen vorzunehmen. | Les coloris réels peuvent légèrement différer des coloris présentés dans ce nuancier. Pour plus d'informations sur les finitions disponibles pour chaque produit, se reporter aux Tarifs Publics. Nowy Styl Group se réserve le droit de modifier les finitions de ses produits.

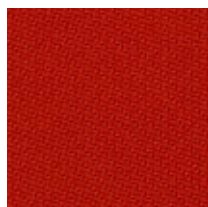
3

Step | STG

Step Melange | STMG

Cigarette
& MatchHigh flame
resistanceEnvironmentally
friendlyConfirmed
safety

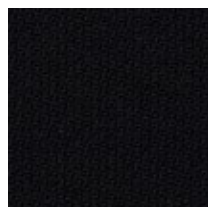
STG63075



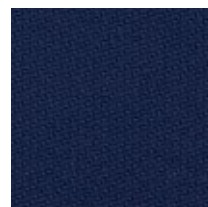
STG63012



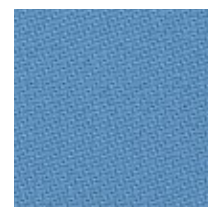
STG62057



STG60999



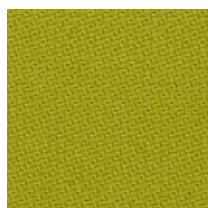
STG65011



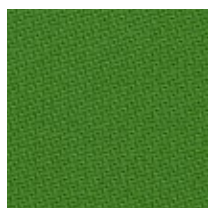
STG66018



STG67004



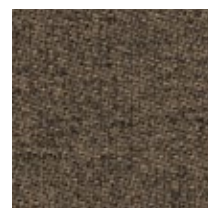
STG68119



STG68120



STMG63075



STMG61103



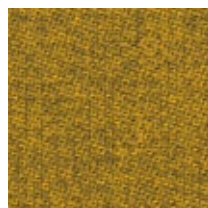
STMG61104



STMG60004



STMG67004



STMG62057

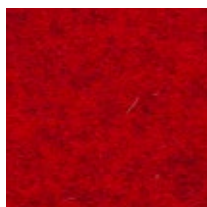


STMG68119

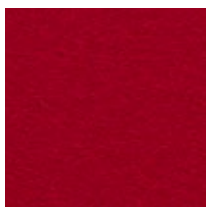
Price group: Grupa cenowa: Preisgruppe: Groupe de prix :	3	Weight: Gramatura: Gewicht: Poids :	335 g/m ²
Composition: Skład: Material: Composition :	100%	Trevira CS	
Abrasion resistance: Odporność na ścieranie: Scheuerfestigkeit: Résistance à l'abrasion :	100 000	Martindale cycles cykli Martindale Touren Martindale cycles Martindales	Colour fastness to light: Odporność barwy na światło: Lichtechtheit: Résistance de la couleur à la lumière :
Colour fastness to rubbing: Odporność barwy na tarcie: Reibechtheit: Résistance de la couleur au frottement:	EN ISO 105-X12 (wet: 4-5 / dry: 4-5)		Pilling: Odporność na pilling: Pilling: Résistance au boulochage :
Flammability: Trudnozapalność: Brandschutznormen: Résistance au feu :	EN 1021-1, EN 1021-2, BS 5852 Crib 5, BS 7176 medium hazard, DIN 4102 B1, NF P 92-503-5 M1, NF D 60-013 AM 18, Calif. Bull. 117E	Other: Inne: Sonstiges: Autres :	EU Ecolabel certificate Oeko-Tex Standard 100 certificate

Note! Colour patterns illustrated here may differ from the originals. Nowy Styl Group reserves the right to change the constructional features and finishes of products. Information about finishes applicable to each product can be found in Nowy Styl Group's pricelists. | Die tatsächlichen Farben können von den, im Katalog abgebildeten Farben abweichen. Weitere Informationen zu den Oberflächen / Stoffen finden Sie in den Preislisten. Nowy Styl Group behält sich das Recht vor, Designänderungen und Änderungen in den Stoffen und Oberflächen vorzunehmen. | Les coloris réels peuvent légèrement différer des coloris présentés dans ce nuancier. Pour plus d'informations sur les finitions disponibles pour chaque produit, se reporter aux Tarifs Publics. Nowy Styl Group se réserve le droit de modifier les finitions de ses produits.

4

Blazer | CUZCigarette
& MatchNatural
origin

CUZ63



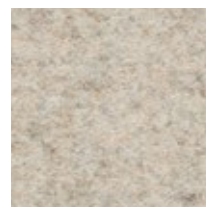
CUZ13



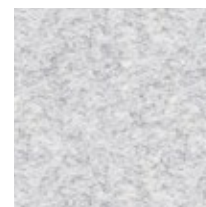
CUZ82



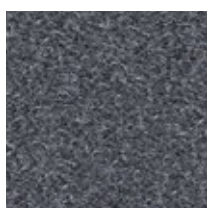
CUZ2W



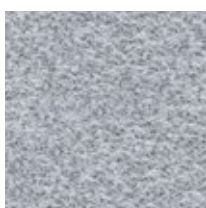
CUZ2Q



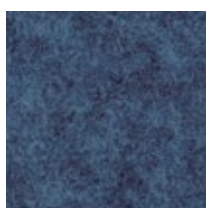
CUZ28



CUZ30



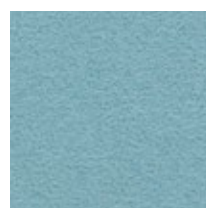
CUZ1E



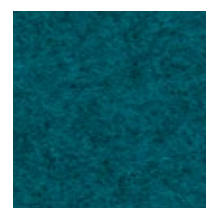
CUZ1W



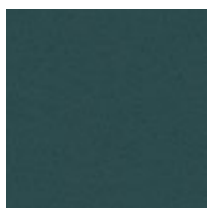
CUZ1R



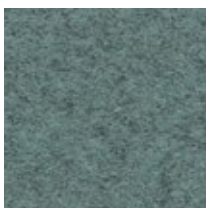
CUZ2Z



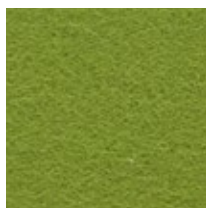
CUZ3B



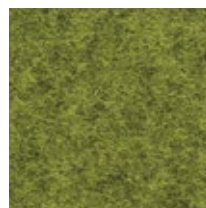
CUZ1P



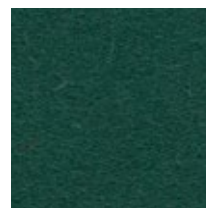
CUZ33



CUZ53



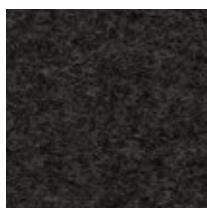
CUZ1K



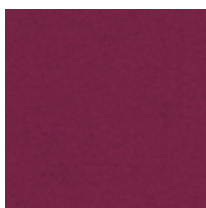
CUZ1N



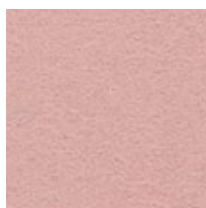
CUZ1M



CUZ67



CUZ21



CUZ2R

Price group: Grupa cenowa: Preisgruppe: Groupe de prix :	4	Composition: Skład: Material: Composition :	100% virgin wool, non metallic dyestuffs czysta wełna, nie zawiera pigmentów metalicznych Schurwolle, nicht schwermetallhaltige Farbstoffe pure laine vierge, teintures non métalliques
Weight: Gramatura: Gewicht: Poids :	460 g/m ²	Abrasion resistance: Odporność na ścieranie: Scheuerfestigkeit: Résistance à l'abrasion :	≥50 000 Martindale cycles cykli Martindale Touren Martindale cycles Martindales
Colour fastness to light: Odporność barwy na światło: Lichtechtheit: Résistance de la couleur à la lumière :	EN ISO 105-B02 (5)	Colour fastness to rubbing: Odporność barwy na tarcie: Reibechtheit: Résistance de la couleur au frottement:	EN ISO 105-X12 (wet: 4 / dry: 4)
Flammability: Trudnozapalność: Brandschutznormen: Résistance au feu :	EN 1021-1, EN 1021-2, BS 7176 low hazard, BS 476 Class 1, NF D 60-013		

4

Fame | F

Cigarette
& MatchHigh flame
resistanceHeavy
dutyConfirmed
safetyEnvironmentally
friendly

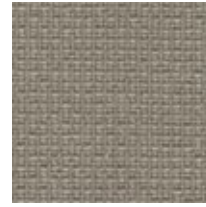
F46



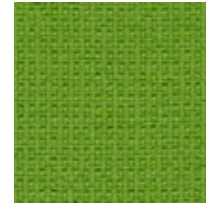
F18



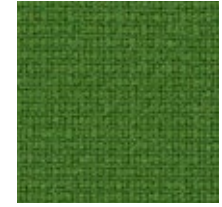
F45



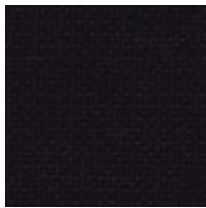
F19



F03



F49



F10



F07



F40



F80



F47

Price group: Grupa cenowa: Preisgruppe: Groupe de prix :	4	Weight: Gramatura: Gewicht: Poids :	450 g/m ²
Composition: Skład: Material: Composition :	95%	wool wełna Wolle laine	polyamide 5% poliamid Polyamid polyamide
Abrasion resistance: Odporność na ścieranie: Scheuerfestigkeit: Résistance à l'abrasion :	200 000	Martindale cycles cykli Martindale Touren Martindale cycles Martindales	
Colour fastness to light: Odporność barwy na światło: Lichtechtheit: Résistance de la couleur à la lumière :	EN ISO 105-B02 (min. 5-7)		
Colour fastness to rubbing: Odporność barwy na tarcie: Reibechtheit: Résistance de la couleur au frottement:	EN ISO 105-X12 (wet: 4-5 / dry: 4-5)	Pilling: Odporność na pilling: Pilling: Résistance au boulochage :	EN ISO 12945-2 (4)
Flammability: Trudnozapalność: Brandschutznormen: Résistance au feu :	EN 1021-1, EN 1021-2 BS 5852 Crib 5 NF D 60-013 AM 18 Önorm B 3825-B1-3 800-Q1 UK Calif. Bull. 117E	Other: Inne: Sonstiges: Autres :	EU Ecolabel certificate Oeko-Tex Standard 100 certificate

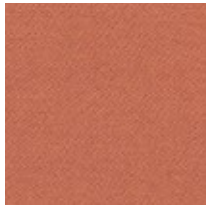
Note! Colour patterns illustrated here may differ from the originals. Nowy Styl Group reserves the right to change the constructional features and finishes of products. Information about finishes applicable to each product can be found in Nowy Styl Group's pricelists. | Die tatsächlichen Farben können von den, im Katalog abgebildeten Farben abweichen. Weitere Informationen zu den Oberflächen / Stoffen finden Sie in den Preislisten. Nowy Styl Group behält sich das Recht vor, Designänderungen und Änderungen in den Stoffen und Oberflächen vorzunehmen. | Les coloris réels peuvent légèrement différer des coloris présentés dans ce nuancier. Pour plus d'informations sur les finitions disponibles pour chaque produit, se reporter aux Tarifs Publics. Nowy Styl Group se réserve le droit de modifier les finitions de ses produits.

4

Synergy | LDS

Cigarette
& MatchHigh abrasion
resistanceEnvironmentally
friendly

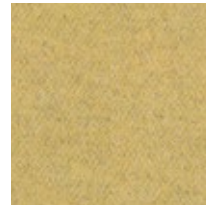
LDS73



LDS75



LDS74



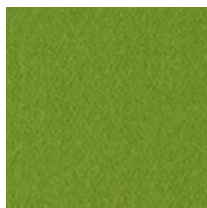
LDS45



LDS44



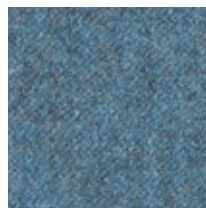
LDS28



LDS47



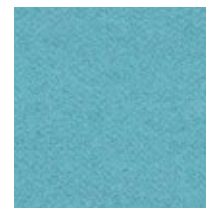
LDS46



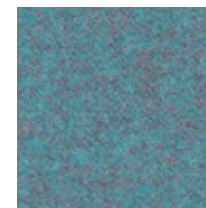
LDS14¹



LDS06



LDS55



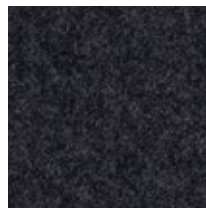
LDS56



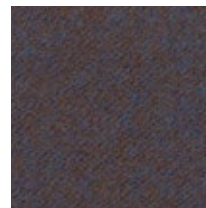
LDS03¹



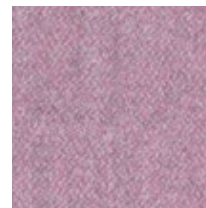
LDS11¹



LDS17¹



LDS38



LDS07¹

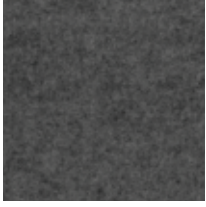


LDS08

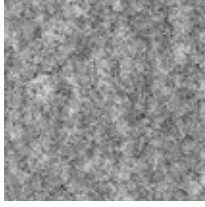
Price group: Grupa cenowa: Preisgruppe: Groupe de prix :	4	Weight: Gramatura: Gewicht: Poids :	400 g/m ²
Composition: Skład: Material: Composition :	95%	virgin wool czysta wełna Schurwolle pure laine vierge	5% polyamide poliamid Polyamid polyamide
Abrasion resistance: Odporność na ścieranie: Scheuerfestigkeit: Résistance à l'abrasion :	≥100 000	Martindale cycles cykli Martindale Touren Martindale cycles Martindales	
Colour fastness to light: Odporność barwy na światło: Lichtechtheit: Résistance de la couleur à la lumière :	EN ISO 105-B02 (5)	Colour fastness to rubbing: Odporność barwy na tarcie: Reibechtheit: Résistance de la couleur au frottement:	EN ISO 105-X12 (wet: 4 / dry: 4)
Pilling: Odporność na pilling: Pilling: Résistance au boulochage :	EN ISO 12945-2 (4)	Other: Inne: Sonstiges: Autres :	EU Ecolabel certificate
Flammability: Trudnozupalność: Brandschutznormen: Résistance au feu :	EN 1021-1, EN 1021-2, BS 7176 low hazard, NF D 60-013, Önorm A 3800-1 Q1, Önorm B 3825		

EN ¹ colour from Landscape Synergy collectionPL ¹ kolor należy do kolekcji Landscape SynergyDE ¹ Farben der Landscape Synergy CollectionFR ¹ le coloris fait partie de la collection Landscape Synergy

Felt



FC01



FC02

Composition: Skład: Material: Composition :	100%	polyester fiber włókno poliestrowe Polyesterfasern fibre de polyester
Weight: Gramatura: Gewicht: Poids :	1000 g/m ²	for thickness 7.5 mm dla grubości 7,5 mm bei einer Stärke von 7,5 mm pour une épaisseur de 7,5 mm
Flammability: Trudnozapalność: Brandschutznormen: Résistance au feu :	EN 1021-1, EN 1021-2	

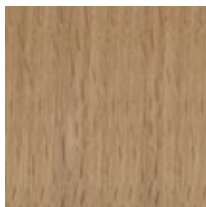
Cigarette
& MatchRecycled
origin

Composition: Skład: Material: Composition :	100%	polyester fiber włókno poliestrowe Polyesterfasern fibre de polyester
Weight: Gramatura: Gewicht: Poids :	650 g/m ²	for thickness 7.5 mm dla grubości 7,5 mm bei einer Stärke von 7,5 mm pour une épaisseur de 7,5 mm

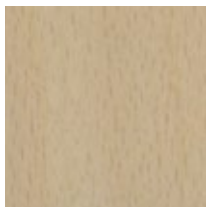
Note! Colour patterns illustrated here may differ from the originals. Nowy Styl Group reserves the right to change the constructional features and finishes of products. Information about finishes applicable to each product can be found in Nowy Styl Group's pricelists. | Die tatsächlichen Farben können von den, im Katalog abgebildeten Farben abweichen. Weitere Informationen zu den Oberflächen / Stoffen finden Sie in den Preislisten. Nowy Styl Group behält sich das Recht vor, Designänderungen und Änderungen in den Stoffen und Oberflächen vorzunehmen. | Les coloris réels peuvent légèrement différer des coloris présentés dans ce nuancier. Pour plus d'informations sur les finitions disponibles pour chaque produit, se reporter aux Tarifs Publics. Nowy Styl Group se réserve le droit de modifier les finitions de ses produits.

Wood

for chairs and furniture



2.D07 (OA) Oak



1.007 (OC) Beech

2.D07 (OA)

- EN** clear varnish for chairs and furniture (beech plywood with oak veneer / solid oak wood)
PL lakier bezbarwny do krzeseł i mebli (sklejka bukowa z okleiną dębową / lite drewno dębowe)
DE Klarlack für Stühle und Möbel (Buchensperrholz beschichtet mit Eichenfurnier / Echtholz Oak)
FR vernis transparent pour sièges et mobilier (hêtre multiplis plaqué bois de chêne / bois massif de chêne)

1.007 (OC)

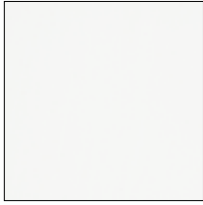
- EN** clear varnish for chairs and furniture (beech plywood / solid beech wood)
PL lakier bezbarwny do krzeseł i mebli (sklejka bukowa / lite drewno bukowe)
DE Klarlack für Stühle und Möbel (Schichtholz Beech / Echtholz Beech)
FR vernis transparent pour sièges et mobilier (hêtre multiplis / bois massif de hêtre)

Note! Colour patterns illustrated here may differ from the originals. Nowy Styl Group reserves the right to change the constructional features and finishes of products. Information about finishes applicable to each product can be found in Nowy Styl Group's pricelists. | Die tatsächlichen Farben können von den, im Katalog abgebildeten Farben abweichen. Weitere Informationen zu den Oberflächen / Stoffen finden Sie in den Preislisten. Nowy Styl Group behält sich das Recht vor, Designänderungen und Änderungen in den Stoffen und Oberflächen vorzunehmen. | Les coloris réels peuvent légèrement différer des coloris présentés dans ce nuancier. Pour plus d'informations sur les finitions disponibles pour chaque produit, se reporter aux Tarifs Publics. Nowy Styl Group se réserve le droit de modifier les finitions de ses produits.

Enamels



3.097 Black Beech

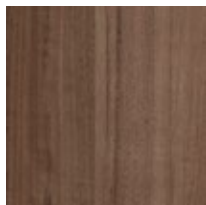


3.093 White Beech

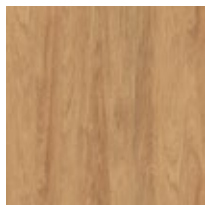
EN enamel colours of wooden handles for cabinets
PL kolor emalii do drewnianych uchwytów szaf
DE Lackfarben der Holzgriffe für Schränke
FR les coloris d'émail pour les poignées de rangements en bois

Melamine

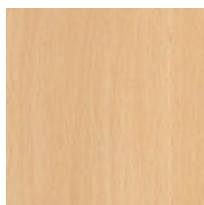
available thickness: 12, 18, 19, 25 mm



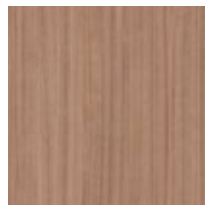
NP Tiepolo Nut



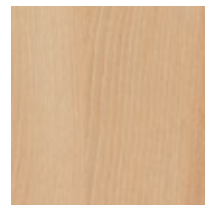
NZ Natural Hickory



NB Beech Bright



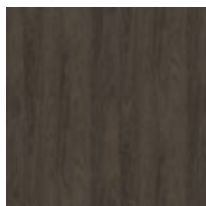
NT Tabac Cherry



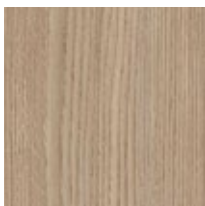
NL Natural
Country Beech



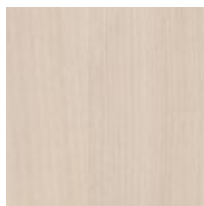
NH Maple



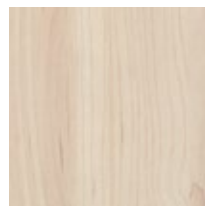
NV Brown Hickory



NA Aragon Oak



NJ Acacia Light



NC Champagne
Hard Maple

EN melamine faced chipboard (MFC), class E1

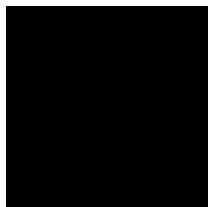
PL płyta meblowa dwustronnie melaminowana, klasa E1

DE Beidseitig melaminbeschichtete Spanplatte der Güteklasse E1

FR panneau de particules mélaminé double face, de la classe E1

Melamine

available thickness: 12, 18, 19, 25 mm



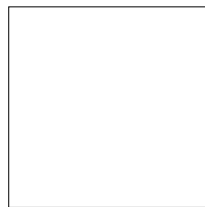
CC Black



MS Slate



MP Platinum



BI White



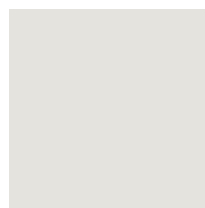
NM Diamond Grey



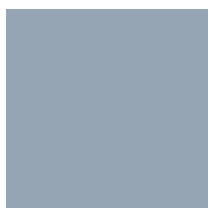
BZ Grey Basalt



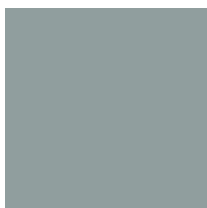
NK Cashmere



MB White Grey



NR Denim Blue



NS Fjord Green



NU Blood Orange



NF Saffron

EN melamine faced chipboard (MFC), class E1

PL płyta meblowa dwustronnie melaminowana, klasa E1

DE Beidseitig melaminbeschichtete Spanplatte der Güteklasse E1

FR panneau de particules mélaminé double face, de la classe E1

Laser edge ABS



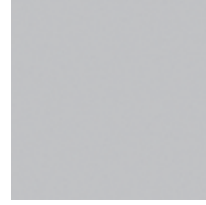
NB Beech Bright



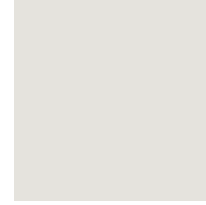
NH Maple



NJ Acacia Light



MP Platinum

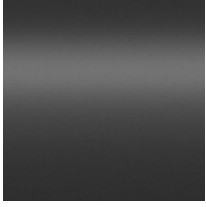


MB White Grey



BI White

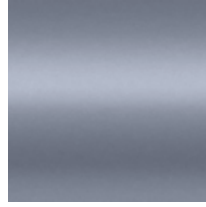
Metal



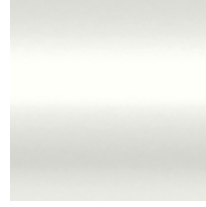
RAL 9005
Black
CZ, BL/BLT, Y



RAL 9006
Aluminium
AL, ALU, WA, X

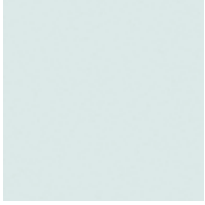


RAL 7015
Grey
GY



RAL 9016
White
BI, WT/WTT, W

Glass



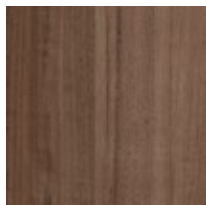
Satino White ST

SQart

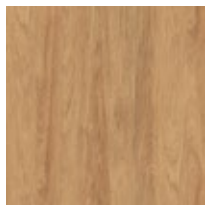
Managerial

Melamine

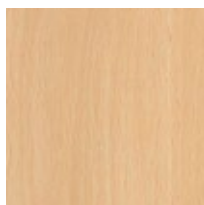
available thickness: 12, 18, 19, 25 mm



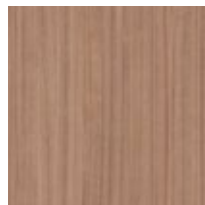
NP Tiepolo Nut



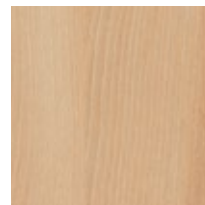
NZ Natural Hickory



NB Beech Bright



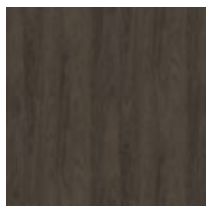
NT Tabac Cherry



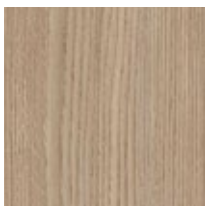
NL Natural
Country Beech



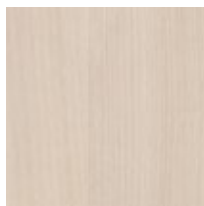
NH Maple



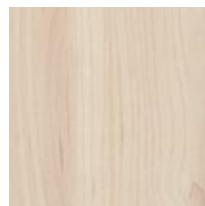
NV Brown Hickory



NA Aragon Oak



NJ Acacia Light



NC Champagne
Hard Maple

EN melamine faced chipboard (MFC), class E1

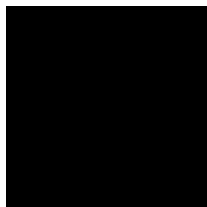
PL płyta meblowa dwustronnie melaminowana, klasa E1

DE Beidseitig melaminbeschichtete Spanplatte der Güteklasse E1

FR panneau de particules mélaminé double face, de la classe E1

Melamine

available thickness: 12, 18, 19, 25 mm



CC Black



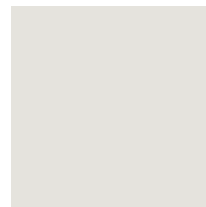
MS Slate



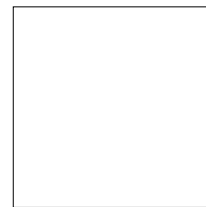
BZ Grey Basalt



MP Platinum



MB White Grey



BI White

EN melamine faced chipboard (MFC), class E1

PL płyta meblowa dwustronnie melaminowana, klasa E1

DE Beidseitig melaminbeschichtete Spanplatte der Güteklasse E1

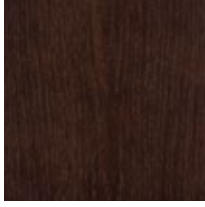
FR panneau de particules mélaminé double face, de la classe E1

Veneer

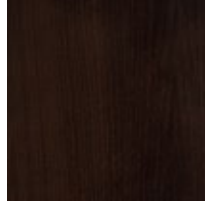
for furniture



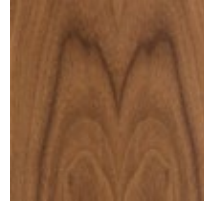
VO Black Oak



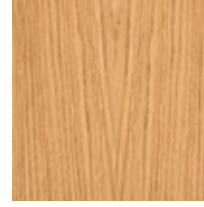
VM Brown Oak



VP Brown
American Walnut



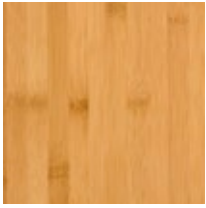
VS Natural
American Walnut



DM Natural Oak



VT Natural Beech

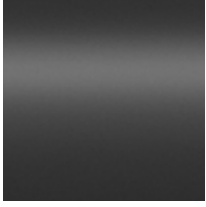


BM Caramel
Bamboo



VN White Ash

Metal



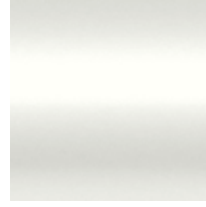
RAL 9005
Black
CZ, BL/BLT, Y



RAL 9006
Aluminium
AL, ALU, WA, X

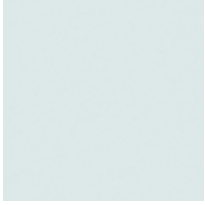


RAL 7015
Grey
GY



RAL 9016
White
BI, WT/WTT, W

Glass



Satino White ST