

home → kitchen → dining room → restaurant → cafe → conference room → hotel

catalogue 2009 → 2011

# cafe

seating for all environments





→ [www.nowystyl.com](http://www.nowystyl.com) → [www.stylistica.com](http://www.stylistica.com)

Dear Client, as you may know, Nowy Styl offers today the widest and most comprehensive range of chairs, armchairs, bar stools and tables for public and private interiors available on the market. The chairs serve over 60 million users in 60 countries on 6 continents.

Our products are recognized not only by their enormous diversity, but also thanks to their confirmed best quality and reliability, focus on design, ergonomics and functionality, as well as always properly balanced prices.

In order to deliver you a wide range of possibilities of arranging cafes, kitchens, restaurants or dining rooms, in this catalogue we present offers of two our brands: Nowy Styl Cafe and Stylistica.

Nowy Styl Cafe Collection offers chairs and tables mostly on a metal frame, which are recommended especially for cafes, bars and modern dining rooms. Following the latest trends in fashion we created a new line of milled chairs made of 7-layer beech plywood. The characteristic feature of the collection is its fine, milled pattern on the chair back, the shape of which is reminiscent of the leaves, fruit or flowers of exotic plants. Each product has an exotic name: *Alani*, *Acerola*, *Lantana*, *Rosa*, *Ammi*, *Lakka*, *Colisa*, *Annato* evocative of the far and sunny regions of Central America. In the catalogue we also introduce a new line – *Pinacolada*, comprising a hocker, stool and table. A classic, elegant frame, with a comfortable, extra thick and soft seat – in the case of the stool and bar stool – will ideally fit your home kitchen, but also cafes. The half-moon shape of the lower rim is of additional value – makes it easy to maximally pull the stool to the table. This function is particularly useful for after hours cleaning purposes.

# WELCOME

To all those who love sophisticated interiors and appreciate solid wooden furniture we are pleased to present products from Stylistica offer. It comprises chairs and tables for dining rooms and restaurants, inspired by the architecture, style and atmosphere of the most beautiful, timeless European cities, where it is beauty that prevails above all. The collection is a product of most knowledgeable and skilled carpentry, at the service of functionality and comfort. The end result is furniture that seduces with its beauty and variety of styles. Carefully selected collection of upholstery follows the latest trends in the furniture industry.

Products of both brands are meant to fulfill our mission of making your life more comfortable. We do hope your customers will find them truly do the job.

Nowy Styl Group Team

## NOWY STYL PREMIUM OFFER

<b>CHAIRS</b>	<b>9</b>	ELVA .....	52	<b>LAMINATES IN REGULAR OFFER</b>	<b>98</b>
ACEROLA .....	22	FIAMMA .....	86	LAMINATE H1733 .....	98
ALANI .....	20	FOSCA .....	82	LAMINATE H3389 .....	98
AMIGO .....	96	HARLEKIN .....	44	LAMINATE W1000 .....	99
AMMI .....	16	HELLO! .....	40	LAMINATE U999 .....	99
ANCA .....	84	INABA .....	38		
ANNATO .....	12	KOBEA .....	28	<b>EXAMPLES OF LAMINATE DECORS FOR</b>	
BALENO .....	70	LAKKA .....	10	<b>SPECIAL INVESTMENT PROJECTS</b>	<b>100</b>
BINGO .....	50	LANTANA .....	14	LAMINATE F516 .....	101
BISTRO .....	56	LATTE A PLUS .....	30	LAMINATE H1428 .....	100
CAFE II .....	58	LATTE B PLUS .....	32	LAMINATE H3005 .....	101
CAFE III .....	60	MALVA .....	53	LAMINATE U622 .....	100
CAFE IV .....	62	MEDEA .....	88		
CAFE V .....	64	MEWA .....	48		
CAFE VI .....	66	MOLINO .....	46		
CAFE VII .....	68	RISTRETTO .....	80		
CAFE VII ARM .....	34	ROSA .....	18		
CALDO .....	72	SALSA .....	92		
CLUB .....	42	SAMBA .....	90		
COLISA .....	24	SQUERTO .....	36		
DOLCE .....	76	VENTO .....	74		
DOLLY .....	78	VERBENA .....	26		
DORINO .....	54	WING II .....	94		

## NOWY STYL STANDARD OFFER

<b>CHAIRS</b>	<b>144</b>	<b>BAR STOOLS</b>	<b>144</b>	<b>TABLES, TABLE BASES</b>	<b>145</b>
AMARETTO .....	146	ADRIA .....	160	DONA-3 .....	163
ARANCIA .....	153	ARANCIA .....	160	DONA-4 .....	163
ARGENTO .....	156	NERON .....	161	FLORIDA .....	168
ARIOSO .....	150	RETRO .....	157	GALA .....	167
ASCONA .....	155	ROSSO .....	161	KAJA .....	166
BETA .....	154	TIZIANO .....	159	KAJA 500 .....	166
CORTINA .....	154	TULIPAN .....	158	KARINA .....	164
DECO .....	151	VEGA .....	159	RICO .....	167
GOLF .....	155	VENUS .....	158	ROZANA .....	165
IBIS .....	149	ZETA .....	157	SONIA .....	165
KELLY .....	149			WIKTOR .....	164
MARGARITA .....	146	<b>STOOLS</b>	<b>145</b>		
NERON .....	150	CHICO .....	162	<b>HANGERS</b>	<b>145</b>
POLYFOLD .....	156	GRAPPO .....	162	ARIZONA .....	170
ROSSO .....	151	HARPO .....	162	COLORADO .....	170
TIZIANO .....	147	ZEPPO .....	162		
TULIPAN .....	152				
TULIPAN PLUS .....	147				
VEGA .....	153				
VENUS .....	152				
VISA .....	148				
ZEUS .....	148				

# CONTENTS

# CONTENTS

<b>BAR STOOLS</b>	<b>103</b>	<b>STOOLS</b>	<b>103</b>	HARLEKIN .....	143
BALENO .....	106	PINACOLADA .....	117	HELLO! .....	126
BINGO .....	107	RINGO .....	118	LENA .....	130
BISTRO .....	109			MELBA .....	139
CAFE VII .....	116	<b>HANGERS</b>	<b>103</b>	MELLO .....	128
CALDO .....	108	POLO .....	119	MOLINO .....	137
DOLCE .....	115	TOP .....	119	PINACOLADA .....	124
DOLLY .....	112			SQUERTO A .....	122
FIAMMA .....	114	<b>TABLES, TABLE BASES</b>	<b>121</b>	TIRAMISU .....	140
JOLA .....	111	BISTRO .....	138	TRACY .....	141
MOLINO .....	110	CAFE .....	134	UP&DOWN .....	132
PINACOLADA .....	104	DOLLY .....	142		
RINGO .....	113	DORINO .....	136		

STYLISTICA OFFER								
CHAIRS, BAR STOOLS		172	TABLES – VENEER TOP		173	TABLES – MELAMINE TOP		173
ALGEO .....	186	ALGEO .....	199	ALSACE NF MA.....	200	CATALONIA NF MA .....	200	
BERGAMO.....	188	ALSACE .....	195	MODERN NF MA.....	201	TUSCANY NF MA.....	201	
CRACOW .....	174	ANDALUSIA .....	196					
FLORENCE.....	182	CATALONIA .....	197					
LISBON .....	180	CATALONIA NF .....	198					
MADRID .....	184	MODERN .....	192					
PALERMO .....	179	MODERN 90X90.....	190					
PARIS .....	176	PROVENCE .....	193					
VIENNA .....	178	TUSCANY .....	194					

<b>STYLISTICA FINISHES</b> .....	202	<b>NOWY STYL FINISHES</b> .....	204
----------------------------------	-----	---------------------------------	-----



Our products are manufactured in conformity with guidelines set forth in the European standards – EN and American ANSI BIFMA. The whole production process is carried out according to standards of the Quality Assurance System ISO 9001:2000.

In order to ensure their top quality, our products are tested for durability and safety in the company's internal laboratory and, additionally, in external research institutions, which is confirmed by relevant certificates. Quality control covers all stages of product creation: from designing a prototype, through every stage of production to the preparation for dispatch.

Our products have been approved for safety and have been granted a GS label by the LGA Institute in Nuremberg; they have also been positively evaluated for their ergonomic and hygienic quality by the Polish National Institute of Hygiene.

A contemporary man spends about 80 thousand hours in his whole life in a sitting position. This means that he would sit without a break for 9 years and 132 hours. This huge amount of time spent sitting makes a properly chosen and used chair the most important furniture item in our life.

For us, health of future users of our chairs is the top priority. That is why we focus our efforts on developing a product offer which would suit as much as possible individual style and work time patterns, as well as psychophysical features of different users.

Our products manufacturing process involves only the use of such materials that do not pose any hazard to human health. We also care about the aesthetic side of our products so that they positively affect the user's mood by pleasant visual experiences.



## WHY OUR PRODUCTS?

1 WIDE PRODUCT RANGE



2 CERTIFIED QUALITY



3 A EUROPEAN PRODUCT



4 ERGONOMICS AND HEALTH



5 PLEASURE OF USE



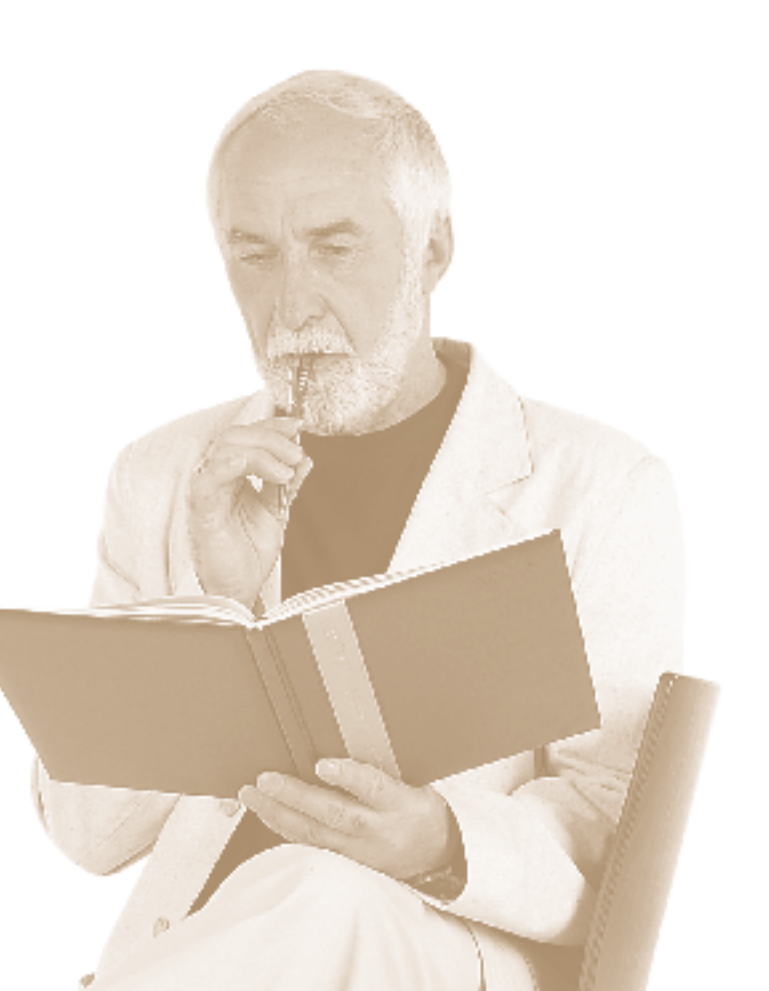
Our products are created with different customers in mind. They satisfy tastes of buyers all over the world thanks to their diversity proper quality, functionality and price ratio. Thanks to the diversity of the Nowy Styl product offer, the furniture can be used in different types of interiors: offices, conference and waiting rooms, gastronomic and residential facilities.

Nowy Styl collection includes over 200 design lines of armchairs and chairs available in about 100 upholstery types, as well as tables and other elements of interior fittings, which make Nowy Styl the biggest and most comprehensive range of chairs in Europe. Stylistica collection comprises complete product lines, which create endless possibilities for interior furnishing.

Our products are made in Europe and raw materials and components for their production come only from reliable suppliers. We cooperate with a large group of European designers and experts in the field of product construction and safety, ergonomics, technology and quality research. For manufacturing of our chairs we employ only adult and capable persons, providing them with fair working conditions and remuneration. As a result, we guarantee constant high quality of our products.

Our products are made to bring joy to their users and to improve the comfort of everyday life by emphasizing the individual character of each interior. We cooperate with designers who represent different nationalities and design styles and we focus on the aesthetic side, comfort of use and functionality of our products, thanks to which our furniture offers an incredible diversity of styles, functions and fittings standards, so that everyone, regardless of their nationality, working style or taste, can find a chair for themselves.





Our products are available to customers in every corner of the world. We make our best efforts to ensure efficient execution of any orders, no matter how large they are, packaged in the way chosen by buyers and delivered to any place of their choice.

We specialize in large batch orders. We completed a contract for 50,000 chairs for the Athens Olympics facilities in 2004, big contracts for the French Post and the French Ministry of Finance, for the Hungarian government and parliament, the Petrochemical Institute in the United Arab Emirates; we also supplied chairs for the European Council Summit, the Football World Cup in Germany in 2006, the Miss Universe Contest in Panama, to mention but a few. The sale of our products is carried out through the Group's 10 branches situated in the key points of Europe and a network of over 3,500 dealers on 6 continents.



Our products are manufactured from environmentally friendly and – as much as possible – reused materials, therefore they are almost 100% recyclable.

In the manufacturing process we use FSC certified wood, which is a guarantee of the full legality and top quality of the material from which our products are made. Plastic elements are produced from regranelates obtained in recycling processes; metal elements are made from materials prepared by their manufacturers with the minimum amount of waste. We have production waste reused or we do it at our own facility; accordingly, plastic elements are transformed into regranelates utilised further in the manufacturing process and wood is used to produce heat needed in our furniture production.

In our everyday activities we follow the 3R principle: reduce (the amount of waste), reuse (reusable items), recycle (materials which can be used again in the production process).

## WHY OUR PRODUCTS?

6 BALANCED PRICE



8 ETHICS IN BUSINESS



7 UNLIMITED AVAILABILITY



9

RESPONSIBILITY TOWARDS THE SURROUNDINGS



RESPONSIBILITY TOWARDS THE ENVIRONMENT



10

The Nowy Styl brand means a guarantee of a balanced price. The prudent cost administration policy involving lean manufacturing, purchasing raw materials in large batches, rational waste management and many other similar activities, allows us to offer products which are always good value for money. That is why, the choice of our products is a guarantee of full satisfaction. Depending on the advanced functional and aesthetic solutions implemented in a furniture item, we offer a diversified product range at varied prices, affordable for everyone.

Our products are made and supplied following ethical principles in relations with our customers, contractors and employees. The Company is against unfair competition, endeavouring to bring full and long-term satisfaction with our products, service and cooperation to each customer and user of our products.

This attitude has been appreciated many times, which is confirmed by the opinions of our business partners and tokens of recognition, such as: the Kisiel Prize *Nagroda Kisiela* – one of the Polish most prestigious prizes, received "for capitalism in good style" or the Caring Employer *Troskliwy Pracodawca* title, awarded by the leading Polish newspaper *Rzeczpospolita*, for "innovatory programme of employee development."

Our products are created in the atmosphere of empathy with the society and with those in need. The company actively supports handicapped children and the healthcare facilities which need assistance. Every year we provide financial and organisational aid to the youngest children in need by:


- funding maintenance grants for them and providing them with support in their education;
- organising New Year's balls and holiday trips;
- furnishing children's homes and hospitals;
- vocational training and job offers for the skilled ones.

A customer who purchases our furniture contributes to the support provided to the youngest and to the improvement of their life standard, as every our item means €1 spent on a book, a maintenance grant or a dreamed-of holiday trip.

# PREMIUM OFFER chairs

★ NEW

## CONTENTS

★ → 22 ACEROLA	★ → 20 ALANI	→ 96 AMIGO	★ → 16 AMMI	→ 84 ANCA	★ → 12 ANNATO
→ 70 BALENO	→ 50 BINGO	→ 56 BISTRO	→ 58 CAFE II	→ 60 CAFE III	→ 62 CAFE IV
→ 64 CAFE V	→ 66 CAFE VI	→ 68 CAFE VII	★ → 34 CAFE VII ARM	→ 72 CALDO	→ 42 CLUB
★ → 24 COLISA	→ 76 DOLCE	→ 78 DOLLY	→ 54 DORINO	→ 52 ELVA	→ 86 FIAMMA
→ 82 FOSCA	→ 44 HARLEKIN	★ → 40 HELLO!	★ → 38 INABA	★ → 28 KOBEA	★ → 10 LAKKA
★ → 14 LANTANA	★ → 30 LATTE A PLUS	★ → 32 LATTE B PLUS	→ 53 MALVA	→ 88 MEDEA	→ 48 MEWA
→ 46 MOLINO	→ 80 RISTRETTO	★ → 18 ROSA	→ 92 SALSA	→ 90 SAMBA	★ → 36 SQUERTO
→ 74 VENTO	★ → 26 VERBENA	→ 94 WING II	★ → 98-101 LAMINATE CHAIRS	<p>P R E M I U M</p> 	





 NEW

LAKKA

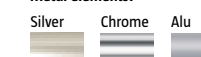
PREMIUM → CHAIRS



#### Features and functions:

- Plywood shell.
- Soft upholstered seat (*seat plus* version).
- Available in standard stain colours only.
- Decorative pattern on the backrest.
- Solid, chromium plated or powder coated metal frame.
- Suitable for stacking (max 4 pieces).
- Minimum order quantity: 20 pieces in various colours.

#### Metal elements:



#### Model range:



→ LAKKA chrome

→ LAKKA chrome seat plus



↑ Chairs used  
at the arrangement:  
LAKKA chrome,  
1.007 natural beech

↑ Table used  
at the arrangement:  
Table base:  
TIRAMISU chrome  
Table top:  
Werzalit, W.038  
maple, 800 x 800



→ stacking 4 pieces





NEW

ANNATO

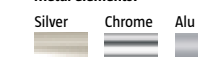
PREMIUM → CHAIRS



### Features and functions:

- Plywood shell.
- Soft upholstered seat (*seat plus* version).
- Available in standard stain and solid colours (recommended for domestic interiors).
- Decorative pattern on the backrest.
- Solid, chromium plated or powder coated metal frame.
- Suitable for stacking (max 4 pieces).
- Minimum order quantity: 20 pieces in various colours.
- For special orders also available in laminate (laminate decors – see page 98-101).

### Metal elements:



### Model range:



→ ANNATO chrome

→ ANNATO chrome seat plus



↑ Chairs used at the arrangement:  
ANNATO chrome,  
1.010 orange

↑ Table used at the arrangement:  
Table base:  
CAFE chrome  
Table top:  
Werzalit, W.011  
red beech, Ø 600



→ stacking max 4 pieces





 **NEW**

# LANTANA

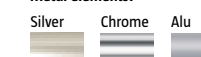
PREMIUM → CHAIRS



## Features and functions:

- Plywood shell.
- Soft upholstered seat (*seat plus* version).
- Armrests with wooden pads (*arm* version).
- Plastic distances underneath armrests protecting table top from scratching while hanging the chair on the table (*arm* version – see page 35).
- The upper hole can serve as a handle to carry a chair.
- Available in standard stain and solid colours (recommended for domestic interiors).
- Decorative pattern on the backrest.
- Solid, chromium plated or powder coated metal frame.
- Suitable for stacking (max 4 pieces).
- Minimum order quantity: 20 pieces in various colours.
- For special orders also available in laminate (laminate decors – see page 98-101).

### Metal elements:



## Model range:



→ LANTANA chrome

→ LANTANA chrome seat plus

→ LANTANA arm chrome seat plus

→ LANTANA arm chrome



↑ Chairs used at the arrangement:  
LANTANA chrome,  
1.033 wenge

↑ Table used at the arrangement:  
Table base:  
LENA chrome  
Table top:  
TOP 50, MA-NG  
wenge, Ø 600



→ stacking max 4 pieces





NEW

AMMI

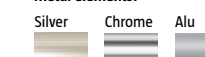
PREMIUM → CHAIRS



### Features and functions:

- Plywood shell.
- Soft upholstered seat (*seat plus* version).
- Armrests with wooden pads (*arm* version).
- Plastic distances underneath armrests protecting table top from scratching while hanging the chair on the table (*arm* version – see page 35).
- Available in standard stain and solid colours (recommended for domestic interiors).
- Decorative pattern on the backrest.
- Solid, chromium plated or powder coated metal frame.
- Suitable for stacking (max 4 pieces).
- Minimum order quantity: 20 pieces in various colours.
- For special orders also available in laminate (laminate decors – see page 98-101).

#### Metal elements:



### Model range:



→ AMMI chrome



→ AMMI chrome seat plus



→ AMMI arm chrome seat plus



→ AMMI arm chrome



↑ Chairs used at the arrangement:  
AMMI chrome,  
1.008 cognac

↑ Table used at the arrangement:  
Table base:  
MELBA chrome  
Table top:  
Werzalit, W.011  
red beech, 800x800



→ stacking max 4 pieces





NEW

ROSA

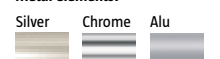
PREMIUM → CHAIRS



#### Features and functions:

- Plywood shell.
- Soft upholstered seat (*seat plus* version).
- Available in standard stain and solid colours (recommended for domestic interiors).
- Decorative pattern on the backrest.
- Solid, chromium plated or powder coated metal frame.
- Suitable for stacking (max 4 pieces).
- Minimum order quantity: 20 pieces in various colours.
- For special orders also available in laminate (laminate decors – see page 98-101).

#### Metal elements:



#### Model range:



→ ROSA chrome

→ ROSA chrome seat plus



↑ Chairs used at the arrangement:  
ROSA chrome,  
1,010 orange

↑ Table used at the arrangement:  
Table base:  
FLORIDA chrome  
Table top:  
TOP 50, MA-NE  
maple, Ø 600



→ stacking max 4 pieces





NEW

ALANI

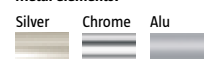
PREMIUM → CHAIRS



#### Features and functions:

- Plywood shell.
- Soft upholstered seat (*seat plus* version).
- Available in standard stain and solid colours (recommended for domestic interiors).
- Decorative pattern on the backrest.
- Solid, chromium plated or powder coated metal frame.
- Suitable for stacking (max 4 pieces).
- Minimum order quantity: 20 pieces in various colours.
- For special orders also available in laminate (laminate decors – see page 98-101).

#### Metal elements:



#### Model range:



→ ALANI chrome



→ ALANI chrome seat plus



↑ Chairs used  
at the arrangement:  
ALANI chrome,  
1.031 dark walnut

↑ Table used  
at the arrangement:  
Table base:  
TIRAMISU chrome  
Table top:  
Werzalit, W125  
arezzo, 800 x 800



→ stacking max 4 pieces





 NEW

# ACEROLA



## Features and functions:

- Plywood shell.
- Available in solid colours only (recommended for domestic interiors).
- Decorative floral pattern on the backrest.
- Solid, chromium plated or powder coated metal frame.
- Suitable for stacking (max 4 pieces).

### Metal elements:



## Model range:



→ ACEROLA chrome



↑ Chairs used  
at the arrangement:  
ACEROLA chrome,  
3.0A8 white,  
3.097 black

↑ Table used  
at the arrangement:  
Table base:  
BISTRO chrome  
Table top:  
Werzalt, W131  
versailles, Ø 800



→ stacking max 4 pieces



NEW

COLISA

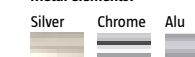
PREMIUM → CHAIRS



#### Features and functions:

- Plywood shell.
- Soft upholstered seat (*seat plus* version).
- Soft upholstered seat and backrest (*plus* version).
- Armrests with wooden pads (*arm* version).
- Plastic distances underneath armrests protecting table top from scratching while hanging the chair on the table (*arm* version – see page 35).
- Available in standard stain colours only.
- Decorative floral pattern on the backrest.
- Solid, chromium plated or powder coated metal frame.
- Suitable for stacking (max 4 pieces).
- Minimum order quantity: 20 pieces in various colours.

#### Metal elements:



#### Model range:



→ COLISA chrome

→ COLISA chrome seat plus

→ COLISA chrome plus

→ COLISA arm chrome



↑ Chairs used at the arrangement:  
COLISA chrome,  
1.033 wenge

↑ Table used at the arrangement:  
Table base:  
LENA chrome  
Table top:  
TOP 50, MA-NG  
wenge, Ø 600



→ stacking max 4 pieces





 **NEW**

**VERBENA**

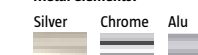
PREMIUM → CHAIRS



#### Features and functions:

- Plywood shell.
- Soft upholstered seat (*seat plus* version).
- Armrests with wooden pads (*arm* version).
- Plastic distances underneath armrests protecting table top from scratching while hanging the chair on the table (*arm* version – see page 35).
- Available in standard stain colours only.
- Decorative pattern on the backrest.
- Solid, chromium plated or powder coated metal frame.
- Suitable for stacking (max 4 pieces).
- Minimum order quantity: 20 pieces in various colours.

#### Metal elements:



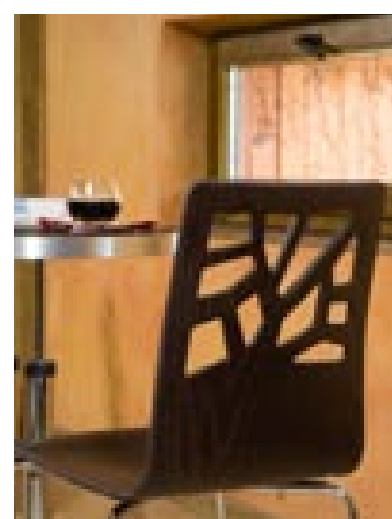
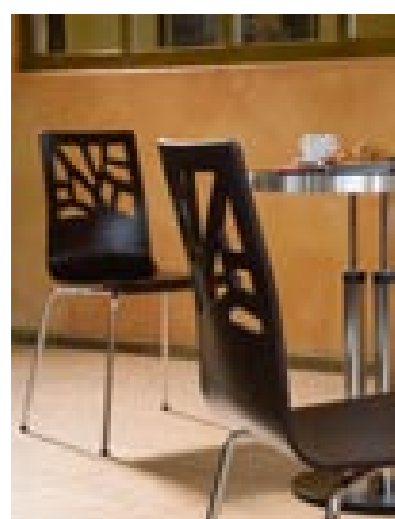
#### Model range:



→ **VERBENA chrome**

→ **VERBENA chrome seat plus**

→ **VERBENA arm chrome**



↑ Chairs used at the arrangement:  
VERBENA chrome,  
1.033 wenge

↑ Table used at the arrangement:  
Table base:  
BISTRO chrome  
Table top:  
TOP 36, MA-NG  
wenge with  
aluminum edge,  
Ø 600



→ stacking max 4 pieces



 **NEW**

**KOBEA**

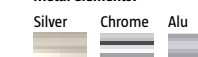
PREMIUM → CHAIRS



#### Features and functions:

- Plywood shell.
- Soft upholstered seat (*seat plus* version).
- Armrests with wooden pads (*arm* version).
- Plastic distances underneath armrests protecting table top from scratching while hanging the chair on the table (*arm* version – see page 35).
- Available in standard stain colours only.
- Decorative pattern on the backrest.
- Solid, chromium plated or powder coated metal frame.
- Suitable for stacking (max 4 pieces).
- Minimum order quantity: 20 pieces in various colours.
- For special orders also available in laminate (laminate decors – see page 98-101).

#### Metal elements:



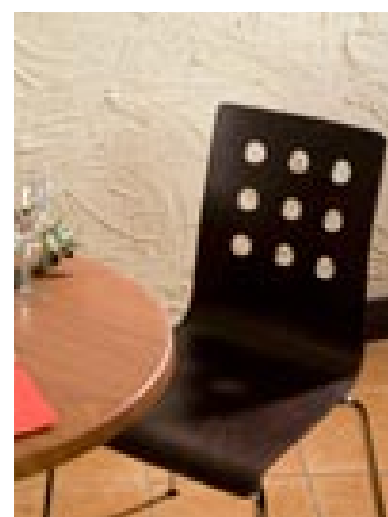
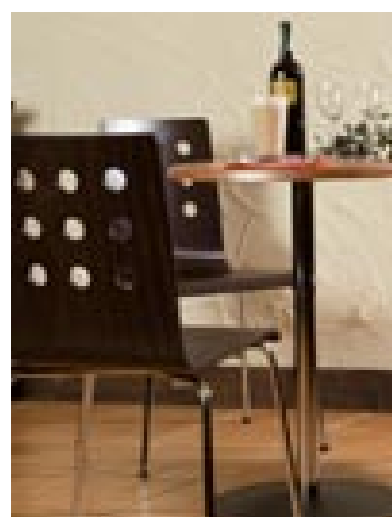
#### Model range:



→ KOBEA chrome

→ KOBEA chrome seat plus

→ KOBEA arm chrome



↑ Chairs used at the arrangement:  
KOBEA chrome,  
1.033 wenge

↑ Table used at the arrangement:  
Table base:  
LENA chrome  
Table top:  
Werzalit, W.011  
red beech,  
Ø 600



→ stacking max 4 pieces





 **NEW**

# LATTE A PLUS

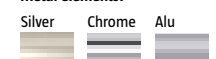
PREMIUM → CHAIRS



## Features and functions:

- Plywood shell.
- Wholly upholstered chair shell.
- Solid, chromium plated or powder coated metal frame.

### Metal elements:

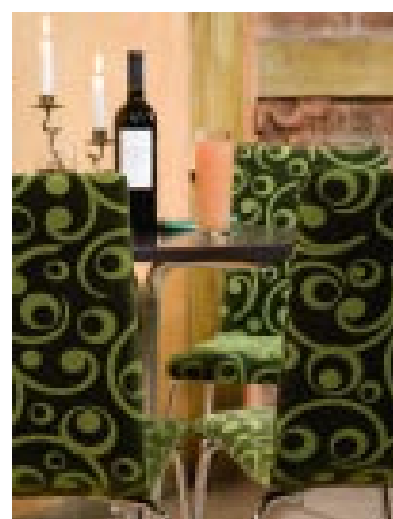


## Model range:



→ LATTE A PLUS chrome

→ PREMIUM OFFER



↑ Chairs used  
at the arrangement:  
LATTE A PLUS chrome,  
upholstery: EC-01

↑ Table used  
at the arrangement:  
Table base:  
KARINA chrome  
Table top:  
ON 1.031 dark walnut,  
Ø 600





NEW

# LATTE B PLUS

PREMIUM → CHAIRS



## Features and functions:

- Plywood shell.
- Armrests with wooden pads (*arm version*).
- Plastic distances underneath armrests protecting table top from scratching while hanging the chair on the table (*arm version* – see page 35).
- Soft, upholstered front of the chair shell.
- Solid, chromium plated or powder coated metal frame.
- Available on standard (*LATTE B PLUS*) and square frame (*LATTE B PLUS SQ*).

**Metal elements:**

Silver	Chrome	Alu

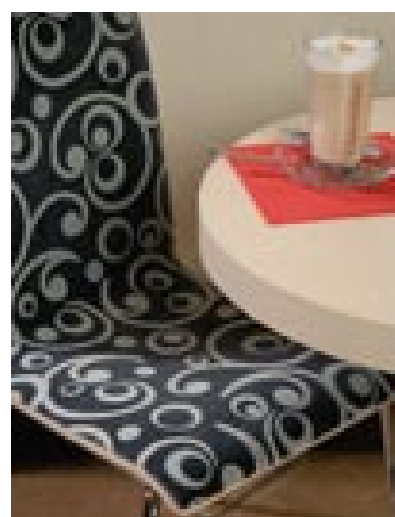
## Model range:



→ LATTE B PLUS chrome

→ LATTE B PLUS SQ chrome

→ LATTE B PLUS arm chrome



↑ Chairs used at the arrangement:  
LATTE B PLUS chrome,  
1,007 natural beech,  
upholstery: EC-03

↑ Table used at the arrangement:  
Table base:  
CAFE chrome  
Table top:  
TOP 50, MA-NE  
maple, Ø 600







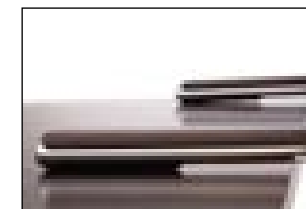
 **NEW**

## CAFE VII ARM

PREMIUM → CHAIRS



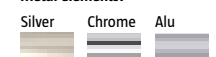
plastic distances



### Features and functions:

- Plywood shell.
- Soft upholstered seat (*seat plus* version).
- Soft upholstered seat and backrest (*plus* version).
- Solid wooden armrests pads.
- Plastic distances underneath armrests protecting table top from scratching while hanging the chair on the table.
- Solid, chromium plated or powder coated metal frame.
- Suitable for stacking (max 4 pieces).

Metal elements:



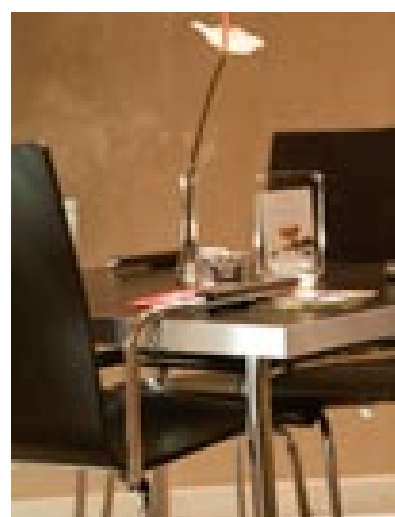
### Model range:



→ CAFE VII arm chrome

→ CAFE VII arm  
chrome seat plus

→ CAFE VII arm  
chrome plus



↑ Chairs used  
at the arrangement:  
CAFE VII arm chrome,  
1.033 wenge

↑ Table used  
at the arrangement:  
Table base:  
TIRAMISU chrome  
Table top:  
TOP 36, MA-NG wenge  
with aluminium edge,  
800 x 800



→ stacking max 4 pieces



NEW

SQUERTO

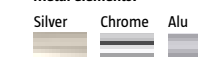
PREMIUM → CHAIRS



### Features and functions:

- Plywood shell.
- Soft upholstered seat (*seat plus* version).
- Soft upholstered seat and backrest (*plus* version).
- Solid, chromium plated or powder coated square metal frame.
- Suitable for stacking (max 8 pieces).
- For special orders also available in laminate (laminate decors – see page 98-101).

### Metal elements:



### Model range:



→ SQUERTO chrome

→ SQUERTO chrome seat plus

→ SQUERTO chrome plus

↑ Chairs used  
at the arrangement:  
SQUERTO chrome,  
1.033 wenge

↑ Table used  
at the arrangement:  
Table base:  
SQUERTO A chrome  
Table top:  
TOP 50, MA-NG wenge,  
800 x 800



The SQUERTO line also comprises:



→ SQUERTO A Table



→ stacking max 8 pieces





### Features and functions:

- Plywood shell.
- Available in standard stain and solid colours (recommended for domestic interiors).
- Solid, chromium plated or powder coated metal frame.
- Suitable for stacking (max 4 pieces).
- Minimum order quantity: 20 pieces in various colours.
- For special orders also available in laminate (laminate decors – see page 98-101).

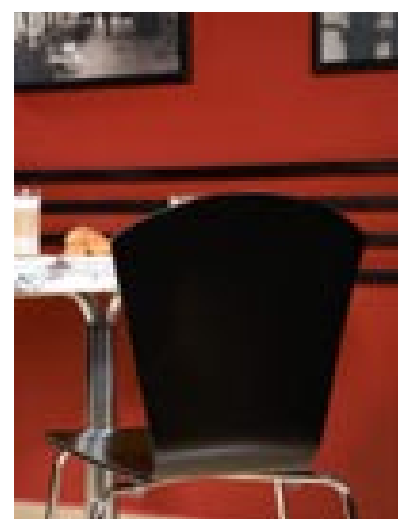
**Metal elements:**

Silver	Chrome	Alu

### Model range:



→ INABA silver



↑ Chairs used at the arrangement:  
INABA chrome,  
3.097 black

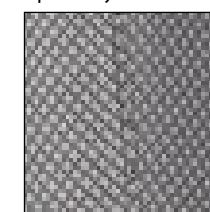
↑ Table used at the arrangement:  
Table base:  
KARINA chrome  
Table top:  
Werzalt, W131  
versailles, Ø 800



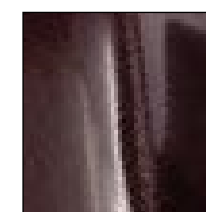
→ stacking max 4 pieces



Upholstery:



TECHNO TCH-01

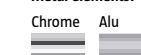


VIPER VR-03

## Features and functions:

- Seat and backrest with integrated armrests upholstered from all sides in leather imitation or fabric.
- Solid chromium plated or powder coated metal frame (4L and 4S versions).
- Single chromium plated steel leg (1S version).
- Mechanism for turning the armchair while using (4S and 1S version).
- Self-adopting glides (4L and 4S versions).

## Metal elements:



## Model range:



→ HELLO! 1S chrome

→ HELLO! 4S chrome

→ HELLO! 4L chrome

→ HELLO! 4L Duo chrome

↑ Chairs used at the arrangement:  
HELLO! 4S chrome, upholstery: YN-200 green, YN-079 red, YN-148 yellow

↑ Table used at the arrangement:  
Table base: LENA chrome  
Table top: TOP 50, MA-BI white, Ø 600



The HELLO! line also comprises:



→ HELLO! Table Duo GL chrome

→ HELLO! Table GL chrome

→ HELLO! Table Duo MA chrome

→ HELLO! Table MA chrome

MELLO Table (matches HELLO! 4S)



→ MELLO Table chrome





#### Features and functions:

- Comfortable armchair wholly upholstered.
- Leather imitation or fabric upholstery.
- Upholstered armrests integrated with the seat and backrest.
- Special type of leather imitation TG-01 in Retro style available for the *Club* line.
- Available version for two (*Club Duo*) and three users (*Club Trio*).

#### Model range:



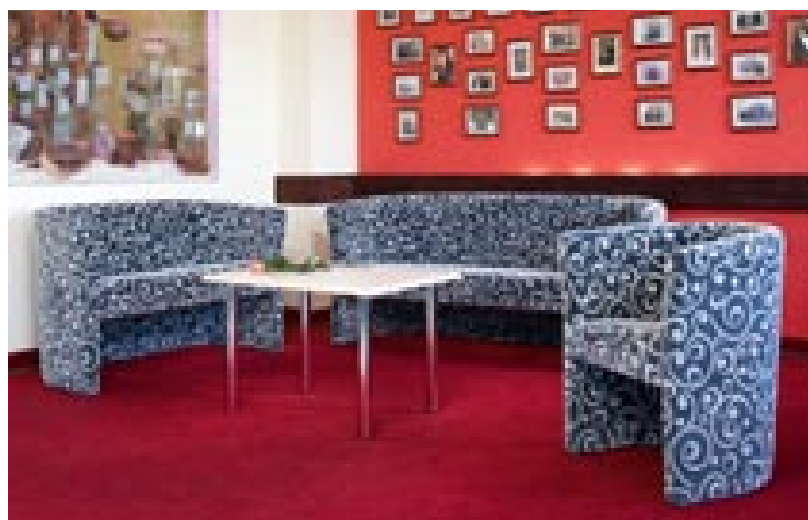
→ CLUB



→ CLUB Duo



→ CLUB Trio



↑ Chairs used  
at the arrangement:  
CLUB Duo  
upholstery: VR-02  
chocolate;  
CLUB  
upholstery: VR-02  
chocolate, VR-05  
silver

↑ Table used  
at the arrangement:  
Table base:  
LENA 580 chrome  
Table top:  
MA-NN walnut,  
Ø 800





↑ Chairs used at the arrangement: HARLEKIN, HARLEKIN chair arm, 1.033 wenge, upholstery: EF-808

↑ Table used at the arrangement: HARLEKIN, 1.033 wenge



The HARLEKIN line also comprises:



→ HARLEKIN Table



→ stacking max 4 pieces



→ stacking max 4 pieces



## Features and functions:

- Soft, upholstered seat and backrest.
- Solid, wooden frame.
- Wooden armrests (*arm* version).
- Suitable for stacking (max 4 pieces).

## Model range:



→ HARLEKIN



→ HARLEKIN arm



→ HARLEKIN chair



→ HARLEKIN chair arm





↑ Chairs used  
at the arrangement:  
MOLINO chrome,  
upholstery: M-52

↑ Chairs used  
at the arrangement:  
MOLINO silver,  
1.033 wenge

↑ Table used  
at the arrangement:  
Table base:  
TIRAMISU silver  
Table top:  
Werzalit, W.038 maple,  
800 x 800



Features and functions:

- Soft, upholstered (*plus* version) or plywood seat (*wood* version).
- Solid, chromium plated or powder coated metal frame.

Metal elements:



Model range:



→ MOLINO wood silver



→ MOLINO wood alu



→ MOLINO chrome plus



→ MOLINO alu plus

The MOLINO line also comprises:



→ MOLINO hocker



→ MOLINO 78



→ MOLINO Table



→ MOLINO Duo Table



↑ Chairs used  
at the arrangement:  
MEWA alu, 1.008 cognac,  
upholstery: M-56



## Features and functions:

- Soft, upholstered seat.
- Solid wooden backrest, back legs and armrest pads.
- Solid, chromium plated or powder coated metal frame.

### Metal elements:

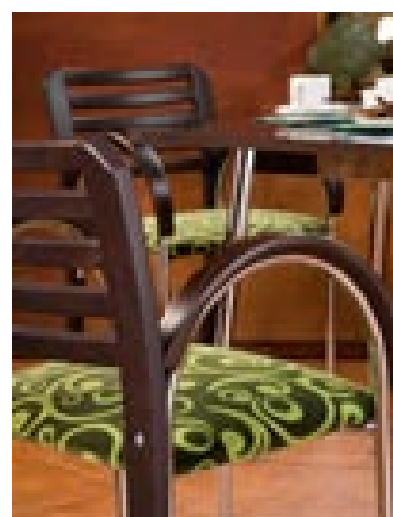


## Model range:



→ MEWA chrome

→ MEWA alu



↑ Chairs used  
at the arrangement:  
MEWA chrome,  
1.033 wenge,  
upholstery: EC-01

↑ Table used  
at the arrangement:  
Table base:  
MELBA chrome  
Table top:  
ON 1.033 wenge,  
800 x 800





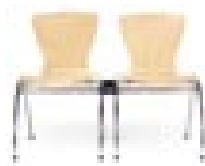


↑ Chairs used at the arrangement: BINGO chrome, 3.0A8 white

↑ Table used at the arrangement: MODERN, 1.126 classic wenge from the Stylistica offer



The BINGO line also comprises:



→ BINGO link  
for more information see our OFFICE 2009→2010 catalogue



→ BINGO-3  
for more information see our OFFICE 2009→2010 catalogue



→ BINGO gtp  
for more information see our OFFICE 2009→2010 catalogue



→ BINGO hocker



→ stacking max 4 pieces



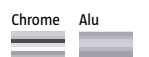
↑ Chairs used at the arrangement: BINGO chrome, 1.016 mahogany



## Features and functions:

- Plywood shell.
- Soft, upholstered seat and backrest (*plus* version).
- Soft, upholstered seat (*seat plus* version).
- Solid wooden armrests pads (*arm* version).
- Solid, chromium plated or powder coated metal frame.
- Suitable for stacking (max 4 pieces).
- For special orders *BINGO wood* also available in laminate (laminate decors – see page 98-101).

### Metal elements:



## Model range:



→ BINGO wood chrome



→ BINGO wood chrome seat plus



→ BINGO wood chrome plus



→ BINGO arm wood chrome plus

# ELVA



## Features and functions:

- Soft, upholstered seat and backrest.
- Solid, wooden frame.
- Wooden armrests.
- Click frame version which allows linking chairs in rows.
- Suitable for stacking (max 4 pieces).



→ ELVA click



→ ELVA

→ stacking max 4 pieces

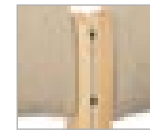
Chairs used ↓  
at the arrangement:  
ELVA, 1.007 natural beech,  
upholstery: EF-012



# MALVA

## Features and functions:

- Soft, upholstered seat and backrest.
- Solid, wooden frame.
- Click frame version which allows linking chairs in rows.
- Suitable for stacking (max 4 pieces).



→ MALVA click



→ stacking max 4 pieces

→ MALVA

↓ Chairs used  
at the arrangement:  
MALVA, 1.007 natural beech,  
upholstery: YB-093







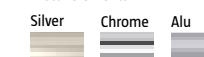
↑ Chairs used  
at the arrangement:  
DORINO silver plus,  
1.033 wenge,  
upholstery: EC-01



## Features and functions:

- Plywood seat and backrest.
- Soft, upholstered seat and backrest (*plus* version).
- Solid, chromium plated or powder coated metal frame.

### Metal elements:



## Model range:



→ DORINO chrome

→ DORINO silver plus

↑ Chairs used  
at the arrangement:  
DORINO alu,  
1.033 wenge

↑ Table used  
at the arrangement:  
Table:  
DORINO alu,  
1.033 wenge



The DORINO line also comprises:



→ DORINO Table

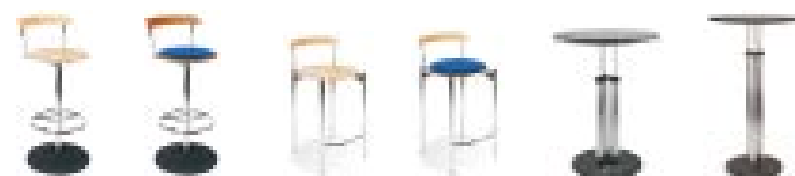


→ DORINO Duo Table



↑ Chairs used  
at the arrangement:  
BISTRO chrome,  
1.033 wenge

The BISTRO line also comprises:



→ BISTRO  
hocker    → BISTRO  
hocker plus    → BISTRO 78    → BISTRO 78  
plus    → BISTRO  
Table    → BISTRO 1100  
Table



→ stacking max 4 pieces



↑ Chairs used  
at the arrangement:  
BISTRO chrome,  
1.007 natural beech



## Features and functions:

- Soft, upholstered (*plus* version) or plywood seat.
- Solid wooden backrest.
- Solid, chromium plated or powder coated metal frame.
- Decorative holes in the seat (plywood version).
- Suitable for stacking (max 4 pieces).

### Metal elements:



## Model range:



→ BISTRO chrome

→ BISTRO chrome plus



# CAFE II

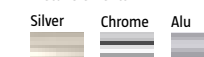


↑ Chairs used at the arrangement:  
CAFE II chrome,  
1.016 mahogany

## Features and functions:

- Plywood shell.
- Handle in the upper part of the backrest to carry the chair.
- Solid, chromium plated or powder coated metal frame.
- Suitable for stacking (max 4 pieces).
- For special orders also available in laminate (laminate decors – see page 98-101).

### Metal elements:



## Model range:



→ CAFE II chrome

→ PREMIUM OFFER

↑ Chairs used at the arrangement:  
CAFE II chrome,  
1.033 wenge

↑ Table used at the arrangement:  
Table base:  
SONIA chrome  
Table top:  
clear glass, Ø 900



The CAFE line also comprises:



→ CAFE Table

→ CAFE 1100 Table



→ stacking max 4 pieces

# CAFE III



↑ Chairs used at the arrangement:  
CAFE III chrome,  
3.0B4 red

## Features and functions:

- Plywood shell.
- Solid, chromium plated or powder coated metal frame.
- Suitable for stacking (max 4 pieces).
- For special orders also available in laminate (laminate decors – see page 98-101).

### Metal elements:



## Model range:



→ CAFE III chrome

→ PREMIUM OFFER

↑ Chairs used at the arrangement:  
CAFE III chrome,  
3.0B5 orange

↑ Table used at the arrangement:  
Table base:  
DONA-3 chrome  
Table top:  
Werzalt, W.055 black, Ø 600



The CAFE line also comprises:



→ CAFE Table

→ CAFE 1100 Table



→ stacking max 4 pieces



# CAFE IV

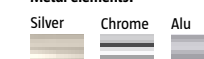


↑ Chairs used at the arrangement:  
CAFE IV chrome,  
1.008 cognac

## Features and functions:

- Plywood shell.
- Handle in the upper part of the backrest to carry the chair.
- Solid, chromium plated or powder coated metal frame.
- Suitable for stacking (max 4 pieces).
- For special orders also available in laminate (laminate decors – see page 98-101).

### Metal elements:



## Model range:



→ CAFE IV chrome

## → PREMIUM OFFER

↑ Chairs used at the arrangement:  
CAFE IV chrome,  
1.007 natural beech

↑ Table used at the arrangement:  
MODERN,  
1.127 beech,  
from the *Stylistica* offer



The CAFE line also comprises:



→ CAFE Table

→ CAFE 1100 Table



→ stacking max 4 pieces



- Plywood shell.
- Handle in the upper part of the backrest to carry the chair.
- Solid, chromium plated or powder coated metal frame.
- Suitable for stacking (max 4 pieces).
- For special orders also available in laminate (laminate decors – see page 98-101).

Silver      Chrome      Alu

## Three chairs with a modern, minimalist design. Each chair has a curved, shell-like seat and backrest with a cutout at the top. They are supported by four thin, silver-colored metal legs. The chairs are shown in three different color options: light orange, dark orange, and dark brown.

→ **PREMIUM OFFER**



A wooden chair with a metal frame, positioned in the bottom right corner of the page.

→ 65





A modern, minimalist wooden chair with a curved backrest and a flat seat. The chair is supported by four thin, silver-colored metal legs. The backrest is a single piece of light-colored wood, curved to follow the spine. The seat is also a single piece of wood, slightly contoured. The legs are made of polished metal, with the front legs being slightly angled outwards. The chair is set against a plain white background, casting a soft shadow on the surface below it.

- Plywood shell.
- Soft, upholstered seat and backrest (*plus* version).
- Soft, upholstered seat (*seat plus* version).
- Solid, chromium plated or powder coated metal frame.
- Suitable for stacking (max 4 pieces).
- For special orders also available in laminate (laminate decors – see page 98-101).

Silver      Chrome      Alu

The image displays five chairs, each with a unique color scheme for its seat and backrest. The first chair has a solid red seat and backrest. The second chair has a solid black seat and backrest. The third chair has a solid yellow seat and backrest. The fourth chair has a yellow backrest and a red seat. The fifth chair has a red backrest and a yellow seat. All chairs have a simple, modern design with a rounded backrest and a flat seat, supported by four thin, silver-colored legs. They are arranged in a row against a plain white background.

→ CAFE VI chrome plus

→ 67



→ stacking max 4 pieces

## CAFE VII



↑ Chairs used  
at the arrangement:  
CAFE VII chrome,  
3.097 black

↑ Table used  
at the arrangement:  
MODERN,  
1.127 beech,  
from the *Stylistica* offer



The CAFE line also comprises:



→ CAFE VII arm



→ CAFE VII hocker



→ **CAFE Table**



→ **CAFE 1100 Table**



→ stacking max 4 pieces



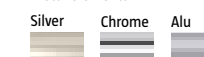
↑ Chairs used  
at the arrangement:  
CAFE VII alu,  
1.010 orange



### Features and functions:

- Plywood shell.
- Soft, upholstered seat and backrest (*plus* version).
- Soft, upholstered seat (*seat plus* version).
- Solid, chromium plated or powder coated metal frame.
- Available on two frame versions (4-leg frame and cfs).
- 4-leg frame – suitable for stacking (max 4 pieces).
- For special orders also available in laminate (laminate decors – see page 98-101).

**Metal elements:**



Model range:



→ CAFE VII chrome



→ CAFE VII chrome seat plus



→ CAFE VII chrome plus



→ CAFE VII cfs







↑ Chairs used  
at the arrangement:  
BALENO silver,  
upholstery: EC-02



### Features and functions:

- Soft, upholstered or plywood seat (*wood* version).
- Solid, chromium plated or powder coated metal frame.

#### Metal elements:



### Model range:



→ BALENO wood chrome

→ BALENO chrome

→ BALENO silver

↑ Chairs used  
at the arrangement:  
BALENO silver,  
upholstery: EC-02

↑ Table used  
at the arrangement:  
Table base:  
MOLINO silver  
Table top:  
Werzalit, W.038 maple,  
800 x 800



The BALENO line also comprises:



→ BALENO hocker

→ BALENO hocker  
wood

→ BALENO 78  
wood



↑ Chairs used  
at the arrangement:  
CALDO chrome,  
upholstery: V-19



### Features and functions:

- Soft, upholstered seat.
- Solid, chromium plated or powder coated metal frame.
- Wide, comfortable seat and backrest.
- Suitable for stacking (max 6 pieces).

#### Metal elements:



### Model range:



→ CALDO silver

→ CALDO alu

→ CALDO chrome

↑ Chairs used  
at the arrangement:  
CALDO silver,  
upholstery: EC-02

↑ Table used  
at the arrangement:  
Table base:  
TIRAMISU silver,  
Table top:  
ON.1033 wenge, 800 x 800



The CALDO line also comprises:



→ CALDO hocker

→ CALDO 78



→ stacking max 6 pieces





↑ Chairs used  
at the arrangement:  
VENTO wood alu,  
1.010 orange



### Features and functions:

- Soft, upholstered or plywood seat (*wood version*).
- Solid wooden backrest.
- Solid, chromium plated or powder coated metal frame.

#### Metal elements:



### Model range:



→ VENTO wood alu

→ VENTO chrome

↑ Chairs used  
at the arrangement:  
VENTO wood alu,  
1.010 orange

↑ Table used  
at the arrangement:  
Table:  
DORINO alu  
1.010 orange





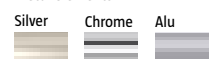
↑ Chairs used  
at the arrangement:  
DOLCE wood chrome,  
1.007 natural beech



### Features and functions:

- Soft, upholstered or plywood seat (*wood* version).
- Solid, chromium plated or powder coated metal frame.

#### Metal elements:



### Model range:



→ DOLCE wood chrome

→ DOLCE alu

↑ Chairs used  
at the arrangement:  
DOLCE wood chrome,  
1.010 orange

↑ Table used  
at the arrangement:  
Table base:  
MELBA chrome  
Table top:  
ON 1.010 orange, 800 x 800



The DOLCE line also comprises:



→ Dolce hocker

→ Dolce 78

→ Dolce hocker  
wood

→ Dolce 78  
wood



↑ Chairs used  
at the arrangement:  
DOLLY alu,  
1.007 natural beech



## Features and functions:

- Plywood seat and backrest.
- Solid, chromium plated or powder coated metal frame.
- Wide, comfortable seat and backrest.
- Suitable for stacking (max 4 pieces).

### Metal elements:



## Model range:



→ DOLLY alu

↑ Chairs used  
at the arrangement:  
DOLLY chrome,  
1.010 orange

↑ Table used  
at the arrangement:  
Table base:  
DOLLY 380 chrome  
Table top:  
Werzalit, W.011 red beech, Ø 900



The DOLLY line also comprises:



→ DOLLY hocker

→ DOLLY 380 Table



→ stacking max 4 pieces





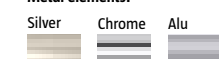
↑ Chairs used  
at the arrangement:  
RISTRETTO alu  
1.033 wenge



## Features and functions:

- Plywood seat and backrest.
- Solid, chromium plated or powder coated metal frame.
- Suitable for stacking (max 6 pieces).

### Metal elements:



## Model range:



→ RISTRETTO chrome



→ stacking max 6 pieces

↑ Chairs used  
at the arrangement:  
RISTRETTO chrome,  
1.010 orange

↑ Table used  
at the arrangement:  
Table base:  
LENA chrome  
Table top:  
Werzalit, W.055 black,  
Ø600





↑ Chairs used  
at the arrangement:  
FOSCA wood alu,  
1.008 cognac



### Features and functions:

- Soft, upholstered or plywood seat (*wood* version).
- Solid, chromium plated or powder coated metal frame.

#### Metal elements:



### Model range:



→ FOSCA silver



→ FOSCA chrome



→ FOSCA black



→ FOSCA wood chrome

↑ Chairs used  
at the arrangement:  
FOSCA chrome,  
upholstery: V-27

↑ Table used  
at the arrangement:  
Table base:  
SONIA chrome  
Table top:  
clear glass, Ø 900





↑ Chairs used  
at the arrangement:  
ANCA chrome plus,  
1.031 dark walnut,  
upholstery V-18

↑ Table used  
at the arrangement:  
Table base:  
MOULO chrome  
Table top:  
MA-NN walnut, Ø 800



↑ Chairs used  
at the arrangement:  
ANCA chrome plus,  
1.031 dark walnut,  
upholstery V-18



### Features and functions:

- Soft, upholstered (*plus* version) or plywood seat (*wood* version).
- Solid wooden backrest.
- Solid, chromium plated or powder coated metal frame.

#### Metal elements:



### Model range:



→ ANCA chrome plus

→ ANCA wood chrome





↑ Chairs used  
at the arrangement:  
FIAMMA silver,  
1.033 wenge,  
upholstery: EC-03



Features and functions:

- Soft, upholstered or plywood seat (*wood version*).
- Solid plywood backrest.
- Solid, chromium plated or powder coated metal frame.

Metal elements:



Model range:



→ FIAMMA silver      → FIAMMA chrome      → FIAMMA wood chrome

↑ Chairs used  
at the arrangement:  
FIAMMA silver,  
1.033 wenge,  
upholstery: EC-01

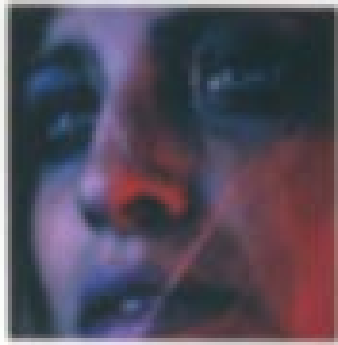
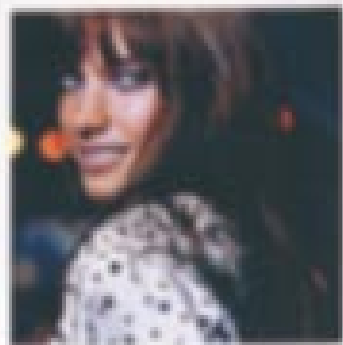
↑ Table used  
at the arrangement:  
Table base:  
MELBA silver  
Table top:  
Werzalit, W.038 maple, 800 x 800



The FIAMMA line also comprises:



→ Fiamma hocker    → Fiamma 78    → Fiamma hocker wood    → Fiamma 78 wood



↑ Chairs used at the arrangement:  
MEDEA chrome,  
1.010 orange

↑ Table used at the arrangement:  
Table base:  
MELBA chrome  
Table top:  
Werzalit, W.011 red beech,  
Ø800



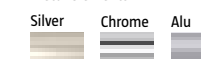
↑ Chairs used at the arrangement:  
MEDEA chrome,  
1.010 orange



### Features and functions:

- Plywood seat and backrest.
- Solid, chromium plated or powder coated metal frame.
- Available in standard stain and solid colours.
- Suitable for stacking (max 3 pieces).

#### Metal elements:



### Model range:



→ MEDEA chrome

→ stacking max 3 pieces





A modern, minimalist armchair with a bright orange upholstered seat and backrest. The chair features a polished chrome metal frame with curved armrests and a four-legged base. It is set against a plain white background.

- Soft, upholstered seat and backrest or plywood shell (*wood* version).
- Wide, comfortable seat and backrest.
- Solid, metal armrests with wooden hand-polished pads.
- Solid, chromium plated or powder coated metal frame.
- *SAMBA-link* – linking chairs in rows.
- Suitable for stacking (max 4 pieces).

Chrome

→ **SAMBA chrome**

→ 91



→ stacking max 4 pieces



# SALSA

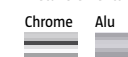


↑ Chairs used at the arrangement:  
SALSA chrome  
1.016 mahogany

## Features and functions:

- Soft, upholstered seat and backrest or plywood shell (*wood version*).
- Wooden armrests.
- Solid, chromium plated or powder coated metal frame.
- *SALSA-link* – linking chairs in rows.
- Suitable for stacking (max 4 pieces).

### Metal elements:



## Model range:



→ SALSA wood chrome

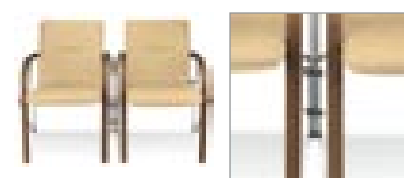
→ SALSA chrome

↑ Chairs used at the arrangement:  
SALSA chrome,  
1.031 dark walnut,  
upholstery: M-43

↑ Table used at the arrangement:  
Table base:  
SONIA chrome  
Table top:  
clear glass, Ø 900



The SALSA line also comprises:



→ SALSA link

→ linking chairs in rows



→ stacking max 4 pieces

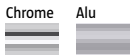


↑ Chairs used  
at the arrangement:  
WING II chrome plus,  
1.008 cognac,  
upholstery: V-15

## Features and functions:

- Plywood shell.
- Soft, upholstered seat and backrest (*plus* version).
- Soft, upholstered seat (*seat plus* version).
- Handle in the upper part of the backrest to carry the chair (version *II.20*).
- Six decorative holes in the backrest (version *II.20*).
- Click frame version – allows linking chairs in rows.
- Solid, chromium plated or powder coated metal frame.
- Suitable for stacking (max 8 pieces).
- For special orders *WING II* also available in laminate (laminate decors – see page 98-101).

### Metal elements:



## Model range:



→ WING II chrome

→ WING II chrome seat plus

→ WING II click chrome plus

→ WING II.20 chrome

↑ Chairs used  
at the arrangement:  
WING II chrome plus,  
1.008 cognac,  
upholstery: V-15

↑ Table used  
at the arrangement:  
ALGEO chrome  
from the *Stylistica* offer



The WING II line also comprises:



→ Wing II click



→ linking chairs in rows



→ stacking max 8 pieces



↑ Chairs used at the arrangement:  
AMIGO chrome, plastic: K-30 red, AMIGO arm chrome, plastic: K-33 orange

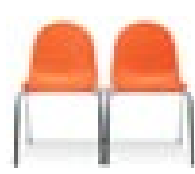
↑ Table used at the arrangement:  
Table base: LENA chrome  
Table top: Werzalit, W.055 black, Ø 600



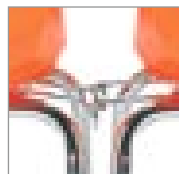
The AMIGO line also comprises:



→ **AMIGO gtp**  
for more information see our OFFICE 2009→2010 catalogue



→ **AMIGO link**  
for more information see our OFFICE 2009→2010 catalogue



→ linking chairs in rows



→ **AMIGO-3**  
for more information see our OFFICE 2009→2010 catalogue



→ stacking max 8 pieces

# AMIGO

Design: herrmann + stump•ulm  
All rights reserved



↑ Chairs used at the arrangement:  
AMIGO arm chrome plastic: K-72



## Features and functions:

- Solid polypropylene shell.
- Non-slippery surface of the seat.
- Armrests with plastic pads (*arm* version).
- Solid, chromium plated metal frame.
- Click frame version – allows linking chairs in rows.
- Suitable for stacking (max 8 pieces).

**Outdoor version**  
For special orders also available with UV seat and zinc plated frame. For more information please contact sales department.

Metal elements:



## Model range:



→ **AMIGO chrome**



→ **AMIGO arm chrome**




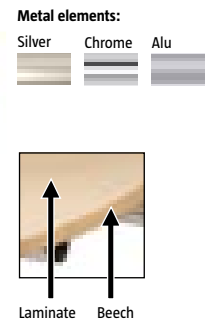


LAMINATE

# H1733

Maple

 NEW



- Features and functions:**
- Plywood laminated chairs.
  - Seat edges in waxed beech plywood.
  - CPL laminate.
  - Hygienic and easy to clean. Does not require any special form of care.
  - Resistant to scratches, abrasion and impact.
  - Meets the requirements of interior fittings regarding fire behaviour (when in contact in fire does not soften, melt or burn).



LAMINATE ON STOCK




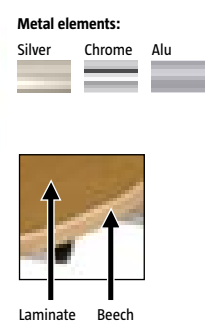
→ CAFE II    → CAFE III    → CAFE IV    → CAFE VI    → CAFE VII    → WING II

LAMINATE

# H3389

Oak

 NEW



- Features and functions:**
- Plywood laminated chairs.
  - Seat edges in waxed beech plywood.
  - CPL laminate.
  - Hygienic and easy to clean. Does not require any special form of care.
  - Resistant to scratches, abrasion and impact.
  - Meets the requirements of interior fittings regarding fire behaviour (when in contact in fire does not soften, melt or burn).

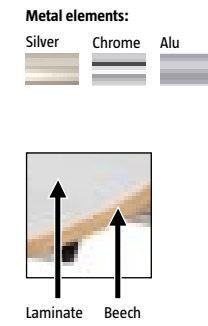


LAMINATE ON STOCK



→ CAFE II    → CAFE III    → CAFE IV    → CAFE VI    → CAFE VII    → WING II

- Features and functions:**
- Plywood laminated chairs.
  - Seat edges in waxed beech plywood.
  - CPL laminate.
  - Hygienic and easy to clean. Does not require any special form of care.
  - Rough surface structure.
  - Resistant to scratches, abrasion and impact.
  - Meets the requirements of interior fittings regarding fire behaviour (when in contact in fire does not soften, melt or burn).

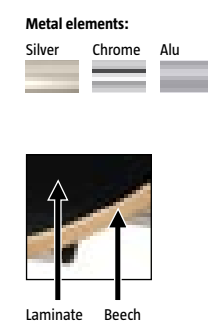


LAMINATE ON STOCK



→ CAFE II    → CAFE III    → CAFE IV    → CAFE VI    → CAFE VII    → WING II

- Features and functions:**
- Plywood laminated chairs.
  - Seat edges in waxed beech plywood.
  - CPL laminate.
  - Hygienic and easy to clean. Does not require any special form of care.
  - Rough surface structure.
  - Resistant to scratches, abrasion and impact.
  - Meets the requirements of interior fittings regarding fire behaviour (when in contact in fire does not soften, melt or burn).



LAMINATE ON STOCK




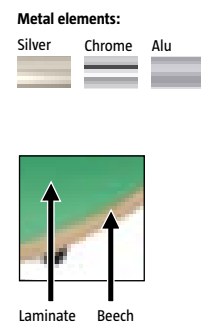
→ CAFE II    → CAFE III    → CAFE IV    → CAFE VI    → CAFE VII    → WING II

LAMINATE

# U622

Green

 NEW



- Features and functions:**
- Plywood laminated chairs.
  - Seat edges in waxed beech plywood.
  - CPL laminate.
  - Hygienic and easy to clean. Does not require any special form of care.
  - Resistant to scratches, abrasion and impact.
  - Meets the requirements of interior fittings regarding fire behaviour (when in contact in fire does not soften, melt or burn).




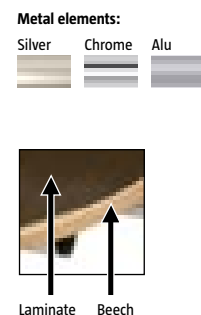
→ CAFE II → CAFE III → CAFE IV → CAFE VI → CAFE VII → WING II

LAMINATE

# H1428

Mocha

 NEW

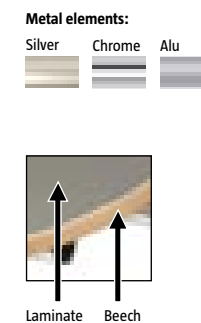


- Features and functions:**
- Plywood laminated chairs.
  - Seat edges in waxed beech plywood.
  - CPL laminate.
  - Hygienic and easy to clean. Does not require any special form of care.
  - Resistant to scratches, abrasion and impact.
  - Meets the requirements of interior fittings regarding fire behaviour (when in contact in fire does not soften, melt or burn).



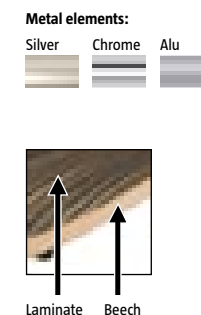
→ CAFE II → CAFE III → CAFE IV → CAFE VI → CAFE VII → WING II

- Features and functions:**
- Plywood laminated chairs.
  - Seat edges in waxed beech plywood.
  - CPL laminate.
  - Hygienic and easy to clean. Does not require any special form of care.
  - Resistant to scratches, abrasion and impact.
  - Meets the requirements of interior fittings regarding fire behaviour (when in contact in fire does not soften, melt or burn).



→ CAFE II → CAFE III → CAFE IV → CAFE VI → CAFE VII → WING II

- Features and functions:**
- Plywood laminated chairs.
  - Seat edges in waxed beech plywood.
  - CPL laminate.
  - Hygienic and easy to clean. Does not require any special form of care.
  - Resistant to scratches, abrasion and impact.
  - Meets the requirements of interior fittings regarding fire behaviour (when in contact in fire does not soften, melt or burn).



→ CAFE II → CAFE III → CAFE IV → CAFE VI → CAFE VII → WING II

PREMIUM OFFER

# bar stools stools hangers

 NEW

## CONTENTS

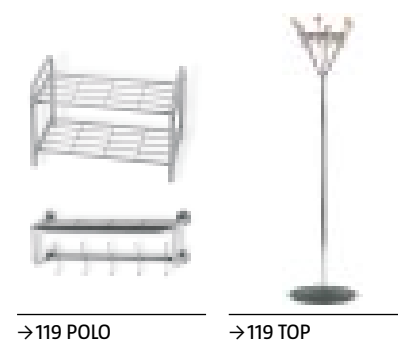
### BAR STOOLS



### STOOLS



### HANGERS





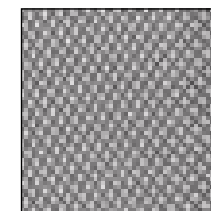


# PINACOLADA HOCKER

Design: Szymon Hanczar



Upholstery:

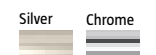


TECHNO TCH-01

## Features and functions:

- Soft upholstered, extra thick seat.
- Solid, chromium plated or powder coated metal frame.
- The half-moon shape of the lower rim makes it easy to maximally pull the hocker to a bar table.

Metal elements:



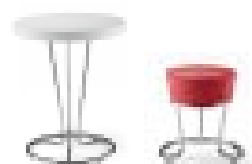
Model range:



→ PINACOLADA hocker chrome

↑ Chairs used  
at the arrangement:  
PINACOLADA hocker chrome  
upholstery: TCH-01

The PINACOLADA line also comprises:



→ PINACOLADA  
Table

→ PINACOLADA  
stool

# BALENO

## HOCKER

Design: Wiesław Radoniewicz



### Features and functions:

- Bar stool available in higher (*hocker*) and lower (78) version.
- The 78 version can be used with kitchen counters and bars.
- Soft upholstered or plywood seat (*wood* version).
- Solid, chromium plated or powder coated metal frame.



Chairs used  
at the arrangement:  
BALENO hocker silver,  
upholstery: VR-04 red,  
VR-05 silver, VR-06 black

The BALENO line also comprises:



→ BALENO

### Metal elements:



### Model range:



→ BALENO hocker  
alu



→ BALENO hocker  
wood alu



→ BALENO 78  
wood alu



### Features and functions:

- Profiled plywood shell.
- Solid, chromium plated or powder coated metal frame.
- Suitable for stacking (max 4 pieces).



# BINGO

## HOCKER



Chairs used  
at the arrangement:  
BINGO hocker chrome,  
3.0A8 white, 3.097 black

The BINGO line also comprises:

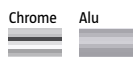


→ BINGO wood



→ BINGO wood arm plus

### Metal elements:



### Model range:



→ BINGO hocker chrome



→ stacking max 4 pieces

→ PREMIUM OFFER

# CALDO HOCKER



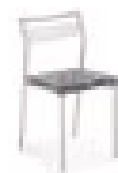
## Features and functions:

- Bar stool available in higher (*hocker*) and lower (78) version.
- The 78 version can be used with kitchen counters and bars.
- Soft upholstered seat.
- Wide, comfortable seat and backrest.
- Solid, chromium plated or powder coated metal frame.



Chairs used  
at the arrangement:  
CALDO hocker chrome,  
upholstery: V-19

The CALDO line also comprises:



→ CALDO

### Metal elements:



### Model range:



→ CALDO hocker chrome



→ CALDO 78 chrome



## Features and functions:

- Bar stool available in higher (*hocker*) and lower (78) version.
- The 78 version can be used with kitchen counters and bars.
- Soft upholstered (*plus* version) or plywood seat.
- Decorative holes in the seat (in plywood version).
- Solid wooden backrest.
- Solid, chromium plated or powder coated metal frame.



Chairs used  
at the arrangement:  
BISTRO hocker chrome,  
1.033 wenge

The BISTRO line also comprises:



→ BISTRO

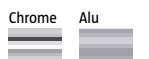


→ BISTRO Table



→ BISTRO 1100 Table

### Metal elements:



### Model range:



→ BISTRO hocker chrome



→ BISTRO hocker chrome plus



→ BISTRO 78 chrome



→ BISTRO 78 chrome plus



# MOLINO

## HOCKER

Design: Małgorzata Pękala, Agata Danielak-Kujda



### Features and functions:

- Bar stool available in higher (*hocker*) and lower (78) version.
- The 78 version can be used with kitchen counters and bars.
- Soft upholstered or plywood seat (*wood* version).
- Solid, chromium plated or powder coated metal frame.



Chairs used ↑  
at the arrangement:  
MOLINO hocker chrome plus,  
upholstery: V-18

The MOLINO line also comprises:



→ MOLINO



→ MOLINO Table

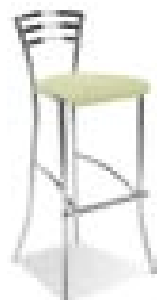


→ MOLINO Duo Table

#### Metal elements:



#### Model range:



→ MOLINO hocker  
chrome plus



→ MOLINO 78  
chrome plus



→ MOLINO hocker  
wood chrome



→ MOLINO 78  
wood chrome

### Features and functions:

- Bar stool available in higher (*hocker*) and lower (78) version.
- The 78 version can be used with kitchen counters and bars.
- Soft upholstered or plywood seat (*wood* version).
- Solid, chromium plated or powder coated metal frame.



↑ Chairs used  
at the arrangement:  
JOLA wood chrome,  
1.008 cognac



#### Metal elements:



#### Model range:



→ JOLA chrome



→ JOLA 78 chrome



→ JOLA wood chrome



→ JOLA 78 wood chrome

# DOLLY HOCKER

Design: Mikołaj Wierszytowski



## Features and functions:

- Wide, comfortable plywood seat and backrest.
- Solid powder coated metal frame.



Chairs used ↑  
at the arrangement:  
DOLLY hocker alu,  
1.033 wenge

The DOLLY line also comprises:



→ DOLLY

→ DOLLY 380 Table

## Metal elements:



Model range:



→ DOLLY hocker alu

## Features and functions:

- Decorative plywood seat.
- Solid, chromium plated or powder coated metal frame.



↑ Chairs used  
at the arrangement:  
RINGO hocker chrome,  
1.033 wenge

The RINGO line also comprises:



→ RINGO

# RINGO HOCKER



## Metal elements:



Model range:



→ RINGO hocker chrome

# FIAMMA

## HOCKER

Design: Małgorzata Pękala



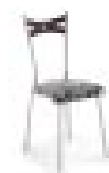
### Features and functions:

- Bar stool available in higher (*hocker*) and lower (78) version.
- The 78 version can be used with kitchen counters and bars.
- Soft upholstered or plywood seat (*wood* version).
- Solid wooden backrest.
- Solid, chromium plated or powder coated metal frame.



Chairs used  
at the arrangement:  
FIAMMA hocker wood alu,  
1.031 dark walnut

The FIAMMA line also comprises:

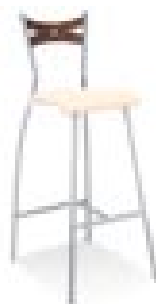


→ FIAMMA

#### Metal elements:



#### Model range:



→ FIAMMA hocker alu



→ FIAMMA 78 alu



→ FIAMMA hocker wood alu



→ FIAMMA 78 wood alu

### Features and functions:

- Bar stool available in higher (*hocker*) and lower (78) version.
- The 78 version can be used with kitchen counters and bars.
- Soft upholstered or plywood seat (*wood* version).
- Solid, chromium plated or powder coated metal frame.



Chairs used  
at the arrangement:  
DOLCE hocker chrome,  
upholstery: V-47

The DOLCE line also comprises:



→ DOLCE

# DOLCE

## HOCKER

Design: Małgorzata Pękala



#### Metal elements:



#### Model range:



→ DOLCE hocker chrome



→ DOLCE 78 chrome



→ DOLCE hocker  
wood chrome



→ DOLCE 78  
wood chrome



CAFE VII  
HOCKER

NEW

- Features and functions:
- Profiled plywood seat.
  - Solid, chromium plated or powder coated metal frame.
  - For special orders also available in laminate (laminate decors – see page 98-101).



Chairs used  
at the arrangement:  
CAFE VII hocker chrome  
1.033 wenge

The CAFE VII line also comprises:



→ CAFE VII → CAFE VII arm → CAFE VII cfs → CAFE Table → CAFE 1100 Table



Model range:



→ CAFE VII hocker chrome

- Features and functions:
- Soft upholstered extra thick seat.
  - Solid, chromium plated or powder coated metal frame.
  - The half-moon shape of the lower rim makes it easy to maximally pull the stool to a table.

NEW

UNIQUE  
DESIGN

PINACOLADA  
STOOL

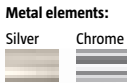


↑ Chairs used  
at the arrangement:  
PINACOLADA stool silver  
upholstery: VR-04

The PINACOLADA line also comprises:



→ PINACOLADA hocker → PINACOLADA Table



Model range:



→ PINACOLADA stool

RINGO  
STOOL

- Features and functions:
- Decorative plywood seat.
  - Solid, chromium plated or powder coated metal frame.
  - Suitable for stacking (max 8 pcs).



Chairs used ↑  
at the arrangement:  
RINGO chrome  
1.010 orange

The RINGO line also comprises:



→ RINGO hocker



Model range:



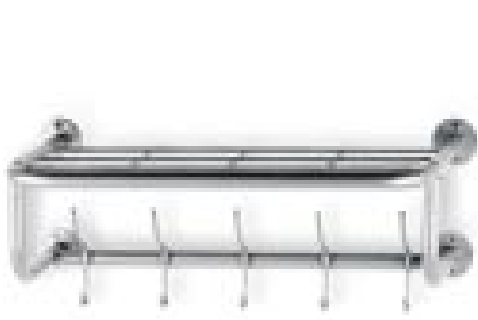
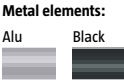
→ RINGO chrome



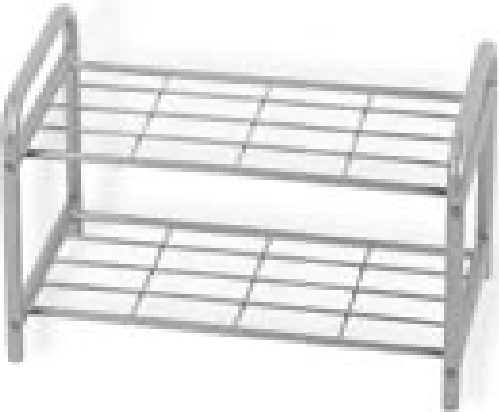
→ stacking max 8 pieces

POLO  
HANGER

- Features and functions:
- Coat hanger made of powder coated metal, available in two sizes (600, 800mm).
  - Shoe shelf made of powder coated metal, available in two sizes (600, 800mm).



→ POLO coat hanger 600 alu

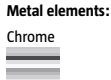
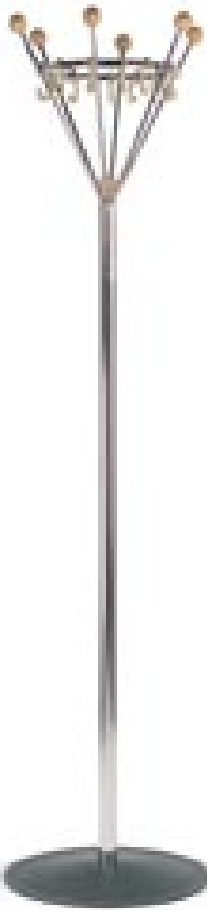


→ POLO shoe shelf 600 alu

- Features and functions:
- A coat hanger made of chromium plated metal tube and black metal foot.
  - The hanger crown made of chromium plated rods with solid wooden round endings in beech colour.
  - 18 plastic hooks in beige colour.



TOP  
HANGER



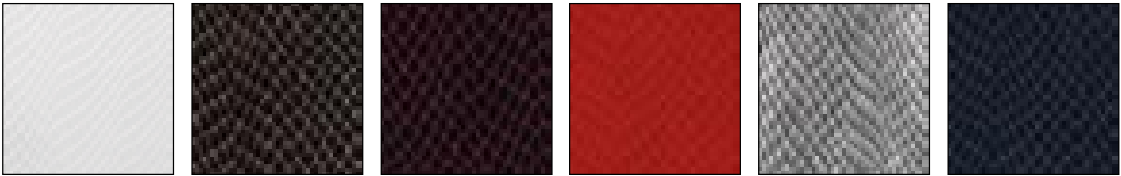
# FINISHES

ONLY FOR NOWY STYL OFFER

NEW FABRICS

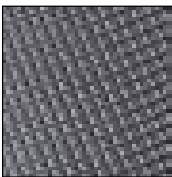


## VIPER



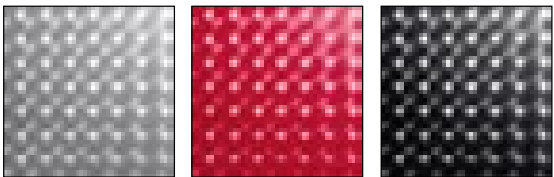
VR-01 white VR-02 chocolate VR-03 wine VR-04 red VR-05 silver VR-06 black

## TECHNO



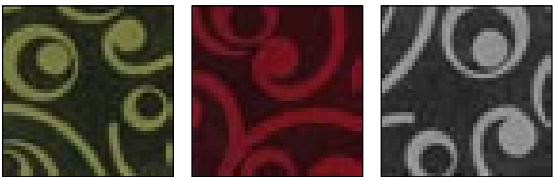
TCH-01

## MIRROR



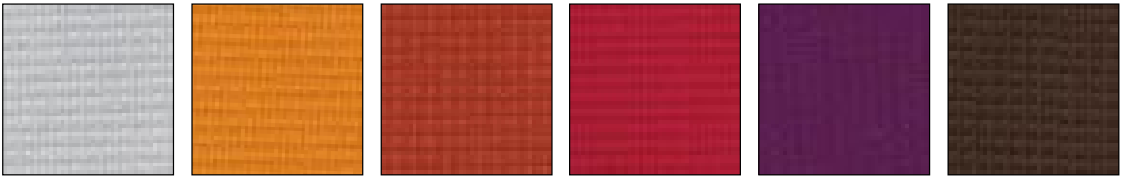
MR-01 MR-02 MR-03

## ELEGANCE

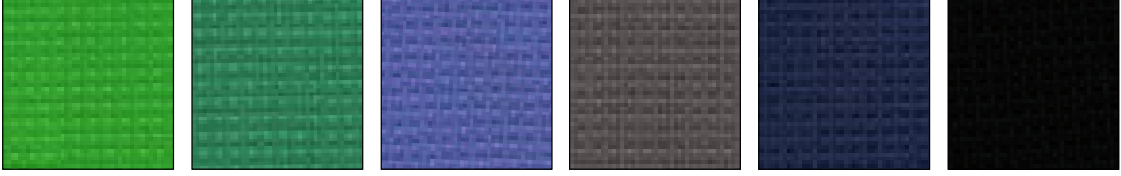


EC-01 EC-02 EC-03

## CONTRACT



YN-108 YN-148 YN-076 YN-079 YN-204 YN-158



YN-200 YN-159 YN-097 YN-206 YN-210 YN-009

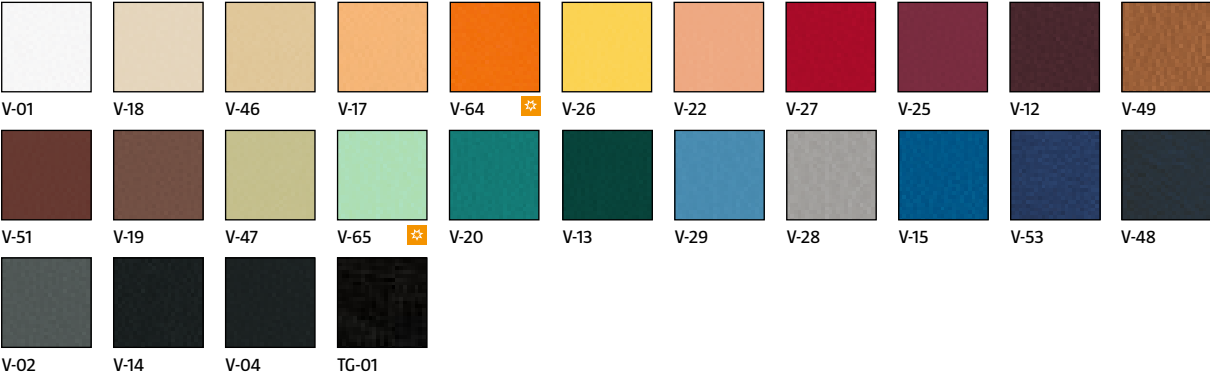
FABRICS COMPARISON					
FABRIC	SYMBOL	COMPOSITION	ABRASION RESISTANCE*	FLAMMABILITY STANDARDS	OTHER FEATURES
VIPER <b>NEW</b>	VR	100% polyester, coating: 21% polyurethane, 79% polyvinyl chloride	40.000		Air permeable fabric; high resistance to cracking; tearing and rubbing; easy to clean
MIRROR <b>NEW</b>	MR	40% polyester, 60% cotton, coating: 100% polyurethane	20.000		Air permeable fabric; high resistance to cracking; tearing and rubbing; easy to clean; fabric with a holographic pattern
TECHNO <b>NEW</b>	TCH	100% cotton and polyester, coating: 100% polyvinyl chloride			Easy to clean (with warm water and damp cloth); resistant to blood and urine; resistant against disinfectants
ELEGANCE <b>NEW</b>	EC	100 % polyamide	100.000		Air permeable fabric; easy to clean with soap and water only; dirt and spilt liquids stay at the surface of the fabric; without penetrating inside
CONTRACT <b>NEW</b>	YN	100% recycled polyester	100.000	cigarette BS EN 1021.1; match BS EN 1021.2**; BS 7176: 2007 Low Hazard; BS 5852: 2006 Section 4 Ignition Source 5; BS 7176: 2007 Medium Hazard	Recycled fabric
RENNA	PP	30% polyurethane, 70% cotton	20.000		Air permeable fabric
LEATHER IMITATION	V	100% polyester, coating: 100% polyvinyl chloride	30.000		Easy to clean fabric
MICROFIBRA	CM	78% polyester, 22% cotton	40.000	cigarette EN 1021.1	
MICRO	M	100% polyester	35.000	cigarette EN 1021.1	
LUCIA	YB	100% recycled polyester	50.000	cigarette EN 1021.1; match EN 1021.2**; BS 7176: 2007 Low Hazard; BS 476 Part 7 Class 1	Recycled fabric
OBAN	EF	100% polyolefin	40.000	cigarette EN 1021.1	

NEW COLOUR

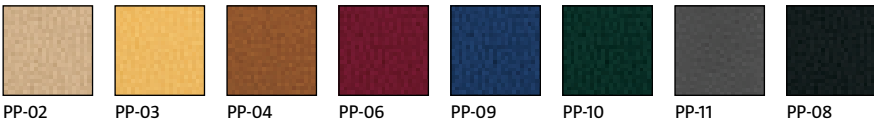
ONLY FOR NOWY STYL OFFER

# FINISHES

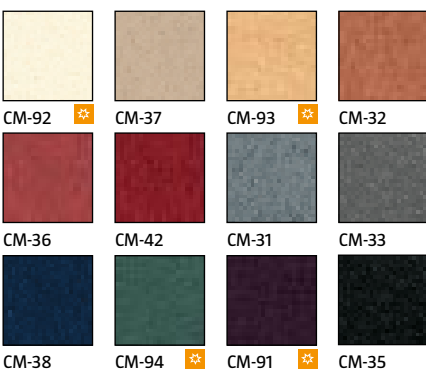
## LEATHER IMITATION



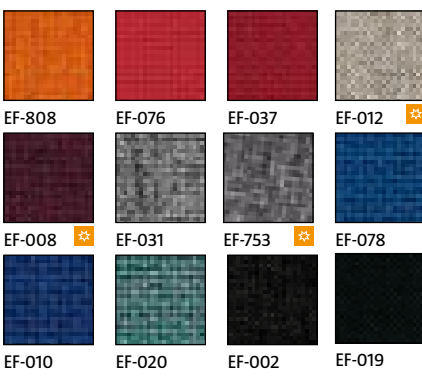
## RENNA



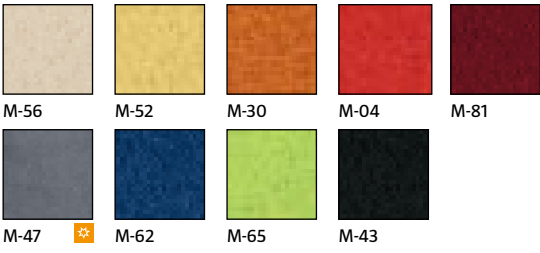
## MICROFIBRA



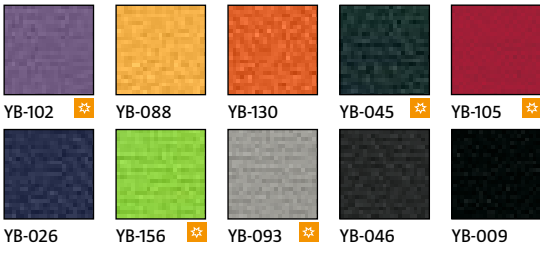
## OBAN



## MICRO

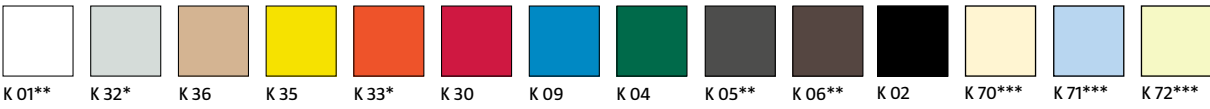


## LUCIA

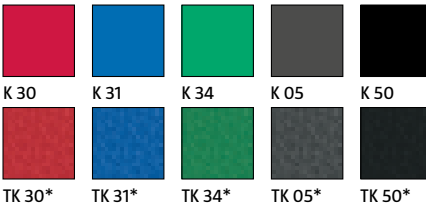


## PLASTIC FINISHES

available for: AMIGO, BETA



available for: POLYFOLD, POLYFOLD PLUS\*

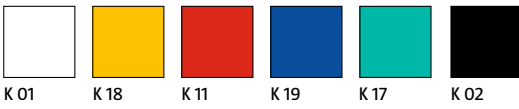


available for: CORTINA



\* for AMIGO only  
\*\* for BETA only  
\*\*\* Colours available at a special order only. The time of delivery and size of an order should be set individually.

available for: GOLF



More information about dimensions, prices, finishes and other technical data in *CAFE & STYLISTICA PRICE LIST* and *CAFE & STYLISTICA FINISHES*.  
Nowy Styl & Stylistica reserve the right to change the constructional features of the products advertised in the catalogue.  
The colours of products and finishes may slightly differ from the colours printed in the catalogue.



FINISHES ONLY FOR NOWY STYL OFFER

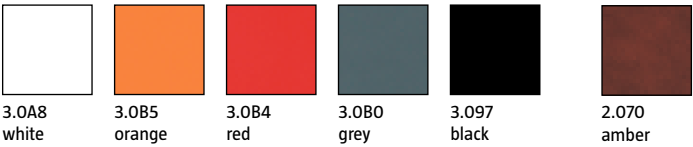
NEW COLOUR

STANDARD STAIN COLOURS



WOODEN ELEMENTS made of solid beech or plywood.

SOLID COLOURS recommended for domestic interiors



SPECIAL STAIN COLOUR for BINGO only



MELAMINATED CHIPBOARD



TOPS MADE OF MELAMINATED CHIPBOARD  
Table tops for indoor usage, made of melaminated chipboard.  
Easy to keep clean surface, edge covered with the 2 mm ABS material. Table top thickness 25 mm.

MELAMINATED CHIPBOARD – TOP 36 with aluminum edge

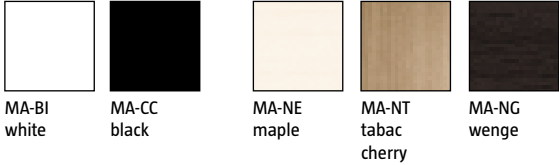


Table top thickness 36 mm.



MELAMINATED CHIPBOARD – TOP 50 with ABS edge in the colour of the table top

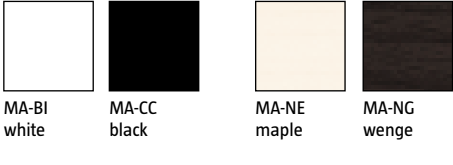


Table top thickness 50 mm.



TABLE TOPS

lined with natural veneer

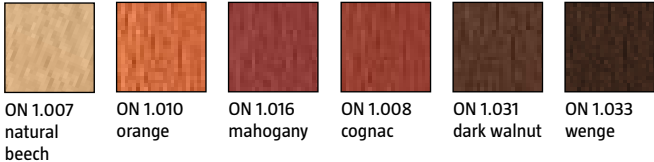


Table top thickness 22 mm.

TABLE TOPS

glass

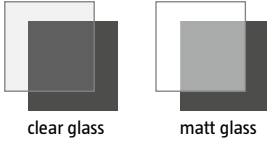
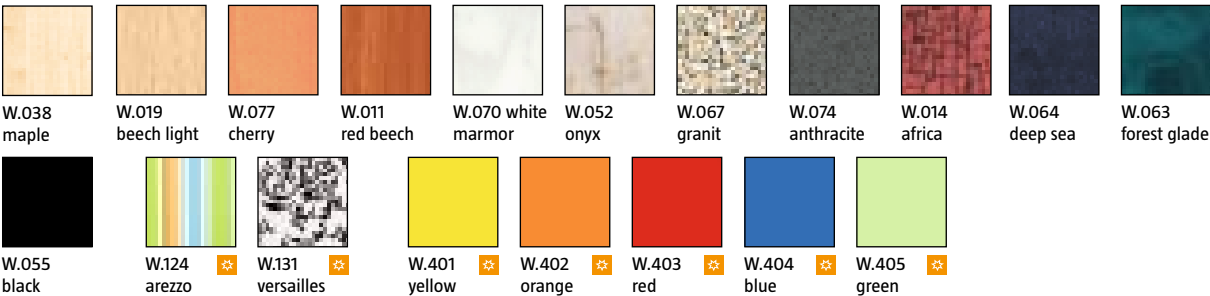


Table top thickness 10 mm.

TABLE TOPS **werzalit**

Table top thickness 18 mm.

Easy to clean table tops for indoor and outdoor applications. Tops resistant to:



More information about dimensions, prices, finishes and other technical data in *CAFE & STYLISTICA PRICE LIST* and *CAFE & STYLISTICA FINISHES*.  
Nowy Styl & Stylistica reserve the right to change the constructional features of the products advertised in the catalogue.  
The colours of products and finishes may slightly differ from the colours printed in the catalogue.

TABLE TOPS		TABLE BASES																					
SHAPES AND DIMENSIONS OF TABLE TOPS																							
		BISTRO	BISTRO 1100	CAFE	CAFE 1100	DOLLY 380	DONA - 3	DONA - 4	FLORIDA	GALA	KAJA	KAJA 500	KARINA	LENA 580	LENA	LENA 1100	MELBA	MELBA 80	MELBA DUO	MELO	MOLINO	MOLINO DUO	PINACOLADA
TABLE TOPS WERZALIT	ø 600																						
	ø 800																						
	ø 900																						
	800x800																						
	700x1100																						
GLASS TABLE TOPS	ø 800																						
	ø 900																						
TABLE TOPS MADE OF MELAMINATED CHIPBOARD	ø 600																						
	ø 800																						
	600x800																						
	800x800																						
	800x1200																						
TOP 36 & TOP 50 MADE OF MELAMINATED CHIPBOARD	ø 600																						
	ø 800																						
	800x800																						
TABLE TOPS WITH NATURAL VENEER	ø 600																						
	ø 800																						
	ø 900																						
	800x800																						
	800x1200																						