

LDS | Synergy

PRICE GROUP | PREISGRUPPE | GROUPE DE PRIX

4

**Composition:**

95% wool, 5% polyamide

Weight:400 g/m²**Abrasion resistance:**

100 000 Martindale cycles

Flammability:EN 1021-1, EN 1021-2, BS 7176 low hazard,
UNI 9175 Classe 1.IM, NF D 60-013 AM18,
Önorm B 3825, Önorm A 3800-1 Q1**Material:**

95% Wolle, 5% Polyamid

Gewicht:400 g/m²**Scheuerfestigkeit:**

100 000 Touren Martindale

Brandschutznormen:EN 1021-1, EN 1021-2, BS 7176 low hazard,
UNI 9175 Classe 1.IM, NF D 60-013 AM18,
Önorm B 3825, Önorm A 3800-1 Q1**Composition :**

95% laine, 5% polyamide

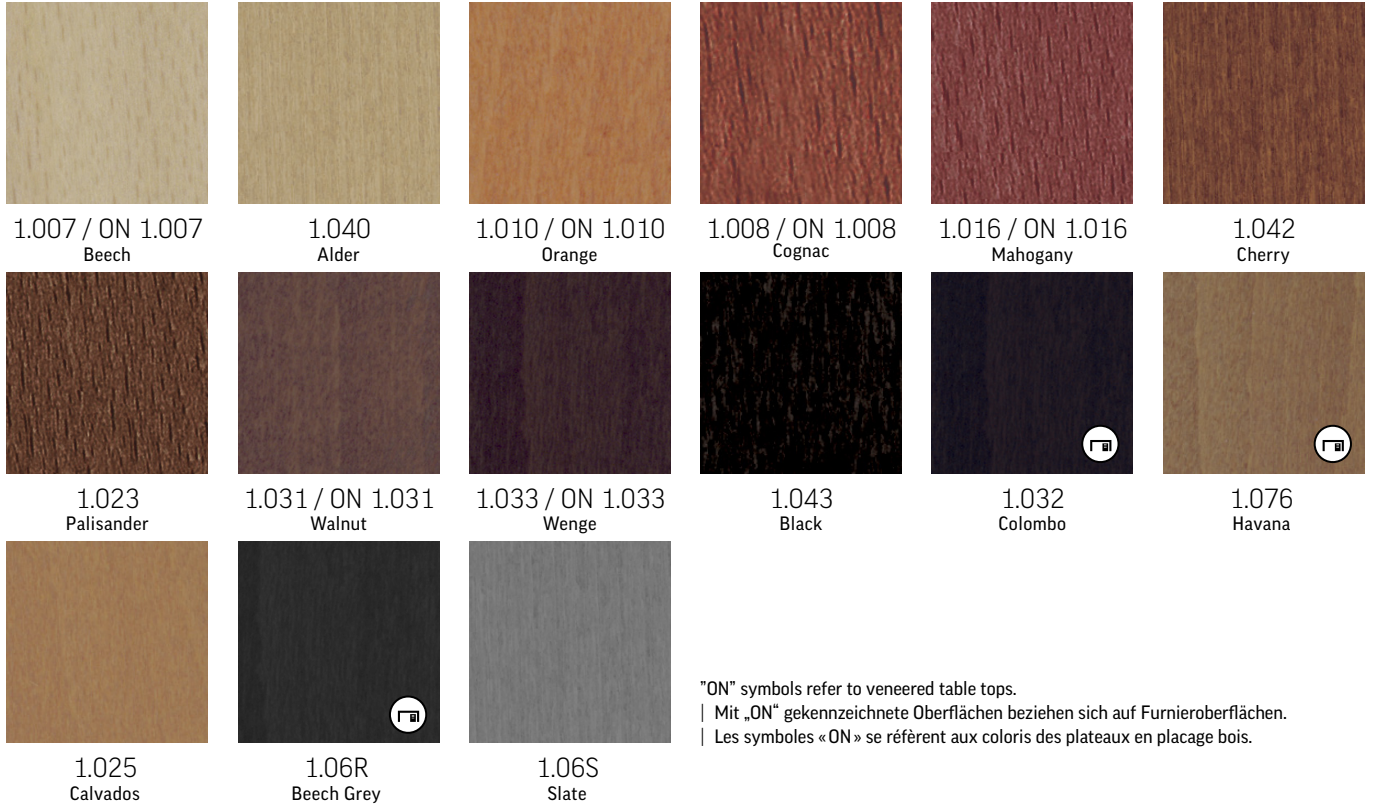
Poids :400 g/m²**Résistance à l'abrasion :**

100 000 Cycles Martindales

Résistance au feu :EN 1021-1, EN 1021-2, BS 7176 low hazard,
UNI 9175 Classe 1.IM, NF D 60-013 AM18,
Önorm B 3825, Önorm A 3800-1 Q1

Wood & Plywood

| Beiztöne Schichtholz | Bois & hêtre multiplis



"ON" symbols refer to veneered table tops.

| Mit „ON“ gekennzeichnete Oberflächen beziehen sich auf Furnieroberflächen.

| Les symboles «ON» se réfèrent aux coloris des plateaux en placage bois.



Veneer furniture colour matching
wood/plywood furniture colour:

CB Veneer = 1.032 (Colombo)
LV Veneer = 1.076 (Havana)
BG Veneer = 1.06R (Beech Grey)



Die abgebildeten Beiztöne sind identisch mit folgenden
Furnieroberflächen für Möbel:

CB Furnier = 1.032 (Colombo)
LV Furnier = 1.076 (Havana)
BG Furnier = 1.06R (Beech Grey)



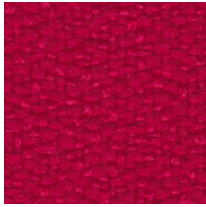
Couleurs de meubles en placage bois assorties aux
couleurs de meubles en bois / multiplis:

CB Placage bois = 1.032 (Colombo)
LV Placage bois = 1.076 (Havana)
BG Placage bois = 1.06R (Beech Grey)

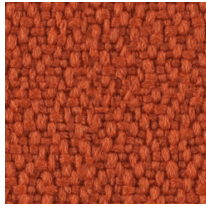
XR | Xtreme

PRICE GROUP | PREISGRUPPE | GROUPE DE PRIX

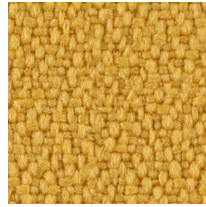
2



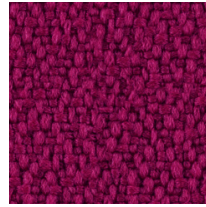
XR079



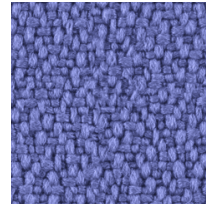
XR076



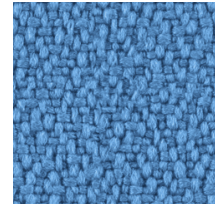
XR072



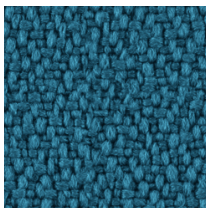
XR101



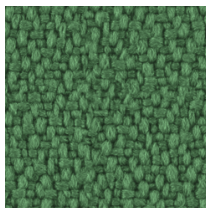
XR069



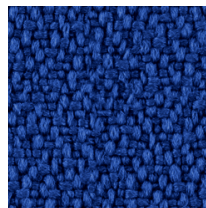
XR073



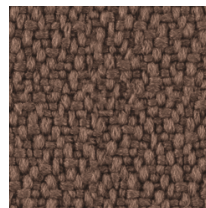
XR160



XR159



XR005



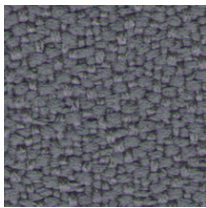
XR091



XR108



XR026



XR081



XR009

Composition:

100% recycled polyester. Non metallic dyestuffs

Weight:310 g/m²**Abrasion resistance:**

100 000 Martindale cycles

Flammability:EN 1021-1, EN 1021-2, BS 7176 low hazard,
BS 7176 medium hazard, BS 5852 Crib 5,
DIN 4102 B1, UNI 9174 Classe 1**Other:**

Environmental: EU Ecolabel certified, recyclable

Material:100% recyceltes Polyester. Nicht schwermetallhaltige
Farbstoffe**Gewicht:**310 g/m²**Scheuerfestigkeit:**

100 000 Touren Martindale

Brandschutznormen:EN 1021-1, EN 1021-2, BS 7176 low hazard,
BS 7176 medium hazard, BS 5852 Crib 5,
DIN 4102 B1, UNI 9174 Classe 1**Sonstige:**Umweltfreundlich: EU Ecolabel zertifiziert,
recyclingfähig**Composition :**

100% polyester recyclé. Teintures non métalliques

Poids :310 g/m²**Résistance à l'abrasion :**

100 000 Cycles Martindales

Résistance au feu :EN 1021-1, EN 1021-2, BS 7176 low hazard,
BS 7176 medium hazard, BS 5852 Crib 5,
DIN 4102 B1, UNI 9174 Classe 1**Autres :**Favorable à l'environnement : certifié EU Ecolabel,
recyclable